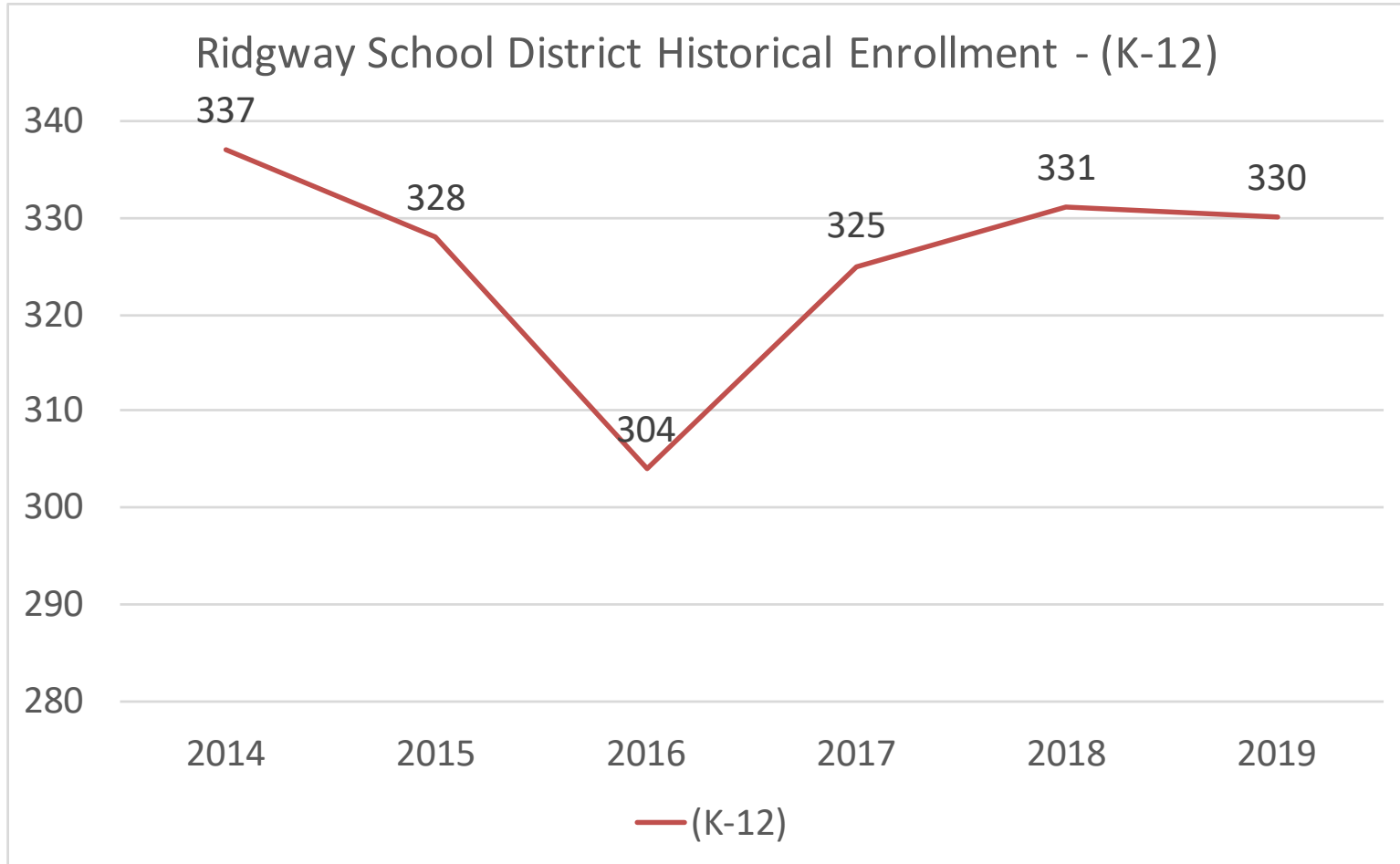


# Ridgway School District R-2 Demographic Data

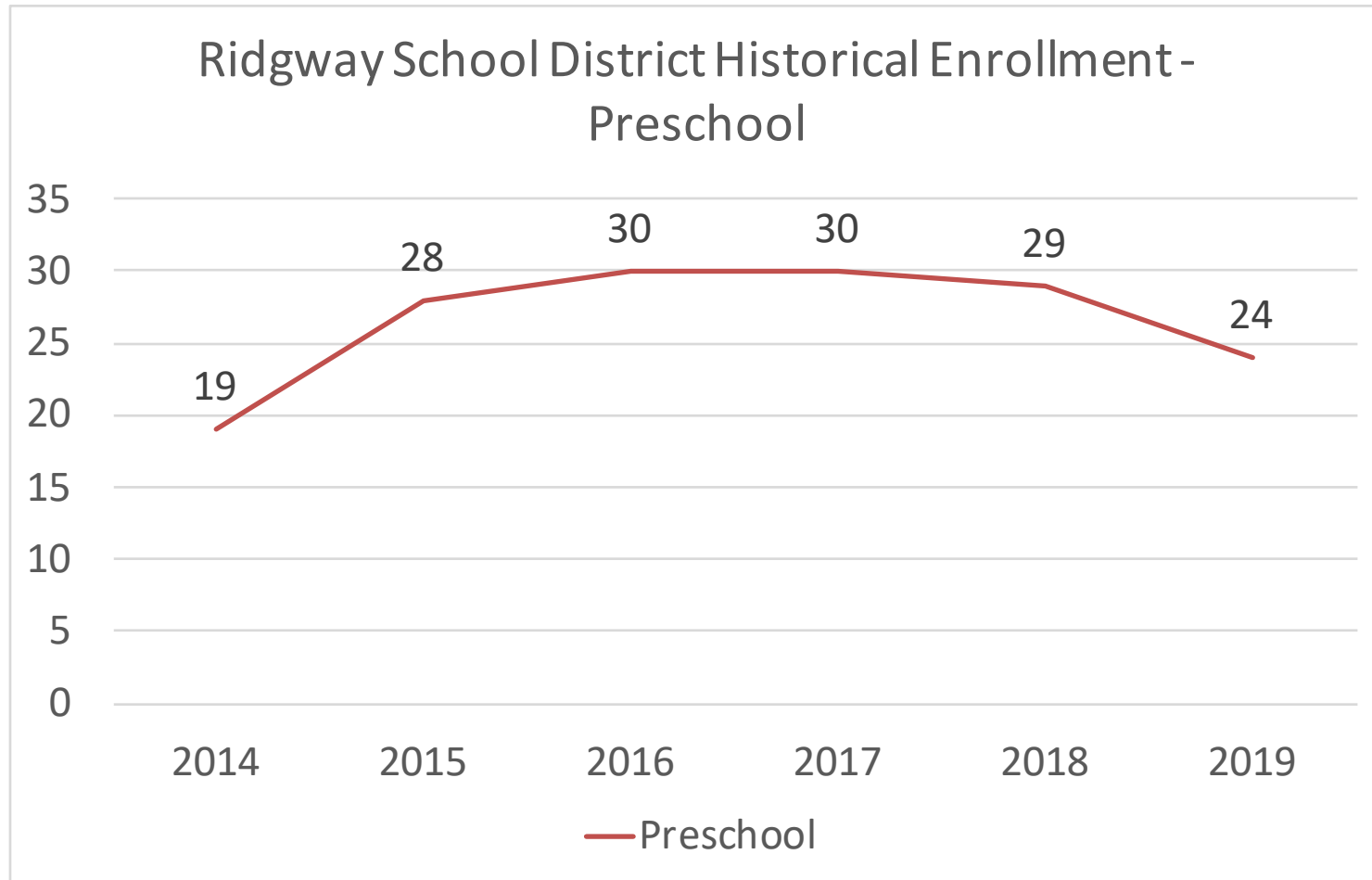
Western Demographics, Inc.

12/12/19

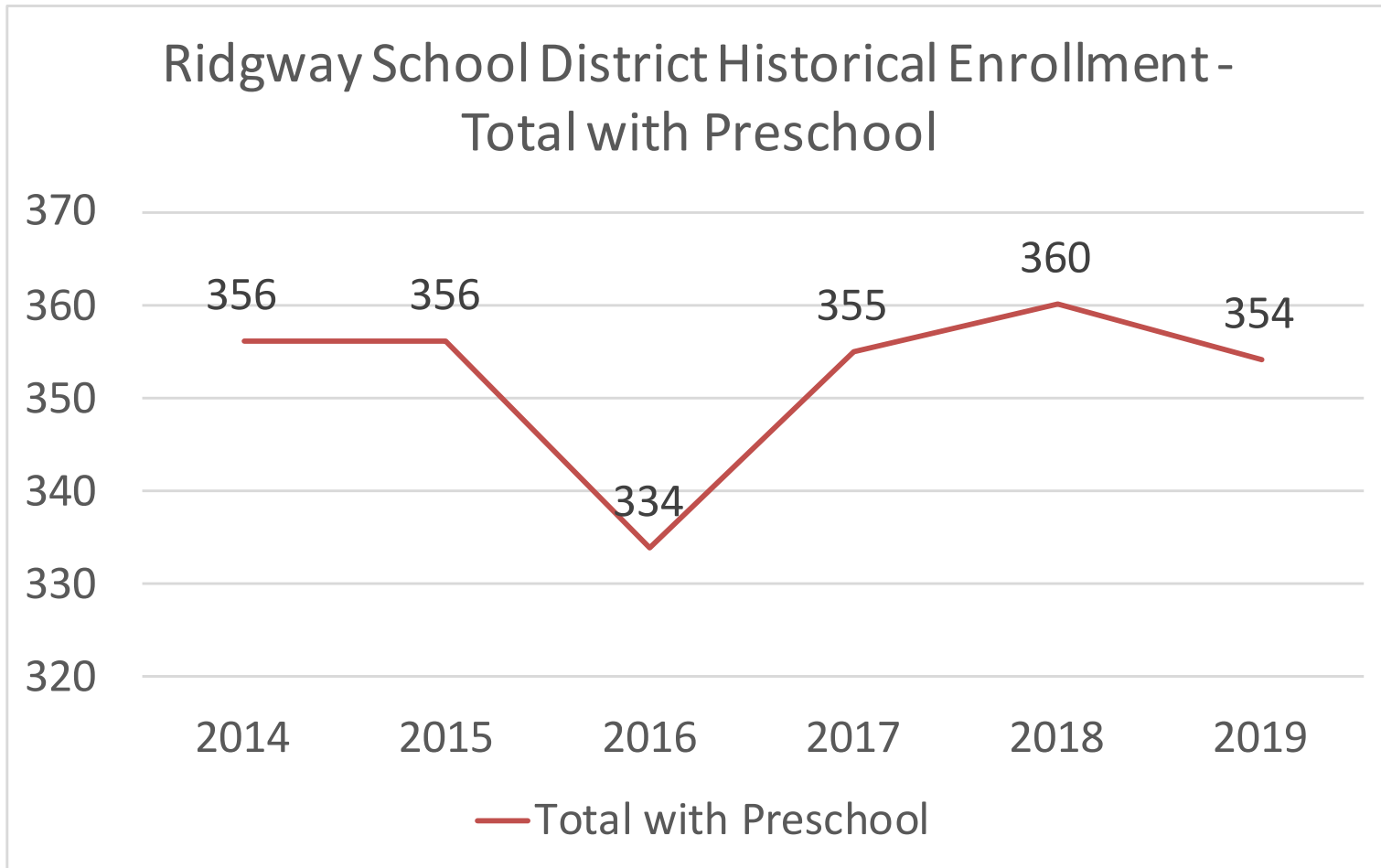
# K-12 Enrollment History



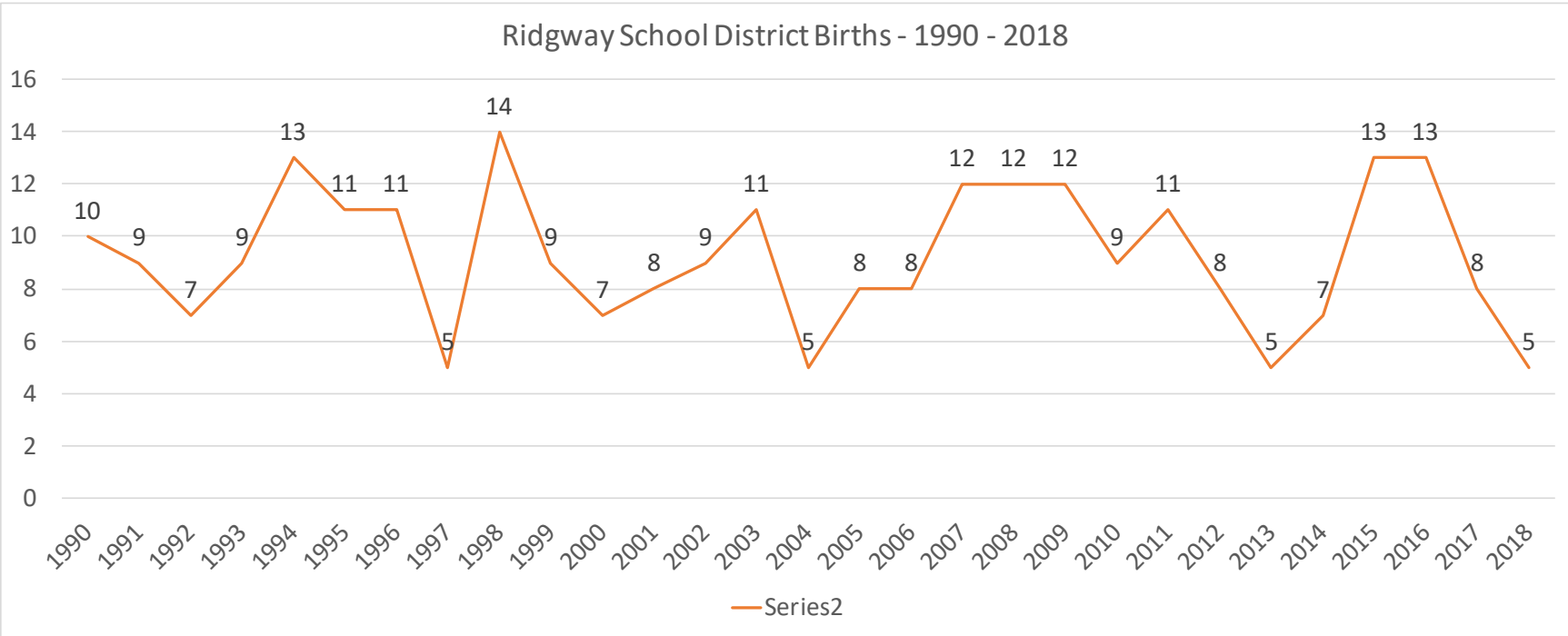
# Preschool Enrollment History



# PK-12 Enrollment History



# Births



# Active Developments

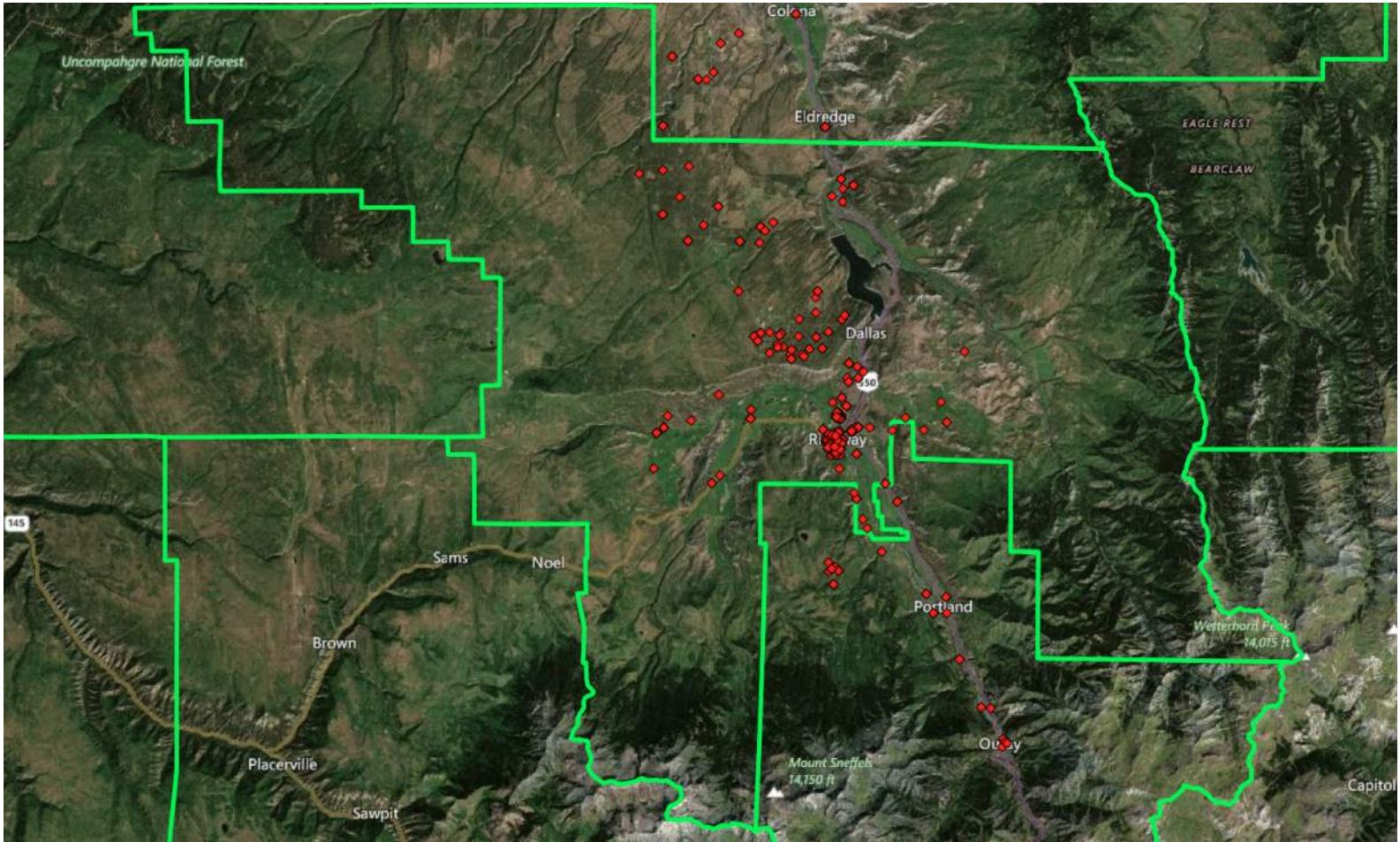
- River Sage – 8 – Large lot single family
- Lena Street Commons – 19 - Townhouse
- Alpenglow Cohousing – 26 – 20 Duplexes, 6 Above garage units
- Vista Park Commons – 23 – Single family and duplexes
- The Preserve – 33 – 22 Single family lots, two 3-unit lots, one 4-unit lot
- Block 28 Townhomes – 6 Townhomes
- Log Hill – 7-10 New single family homes per year

# Draft Enrollment Forecast

<u>Year</u>	(K-5)	(6-8)	(9-12)	(K-12)	<u>Preschool</u>	Tot w PS	Net Growth
<b>2020</b>	<b>181</b>	<b>54</b>	<b>94</b>	<b>328</b>	24	352	-2
<b>2021</b>	<b>177</b>	<b>52</b>	<b>92</b>	<b>322</b>	24	346	-6
<b>2022</b>	<b>176</b>	<b>53</b>	<b>93</b>	<b>322</b>	24	346	0
<b>2023</b>	<b>170</b>	<b>50</b>	<b>87</b>	<b>307</b>	24	331	-15
<b>2024</b>	<b>167</b>	<b>62</b>	<b>90</b>	<b>318</b>	24	342	11
<b>2025</b>	<b>171</b>	<b>64</b>	<b>85</b>	<b>320</b>	24	344	1
<b>2026</b>	<b>174</b>	<b>58</b>	<b>97</b>	<b>329</b>	24	353	10
<b>2027</b>	<b>181</b>	<b>57</b>	<b>96</b>	<b>333</b>	24	357	4

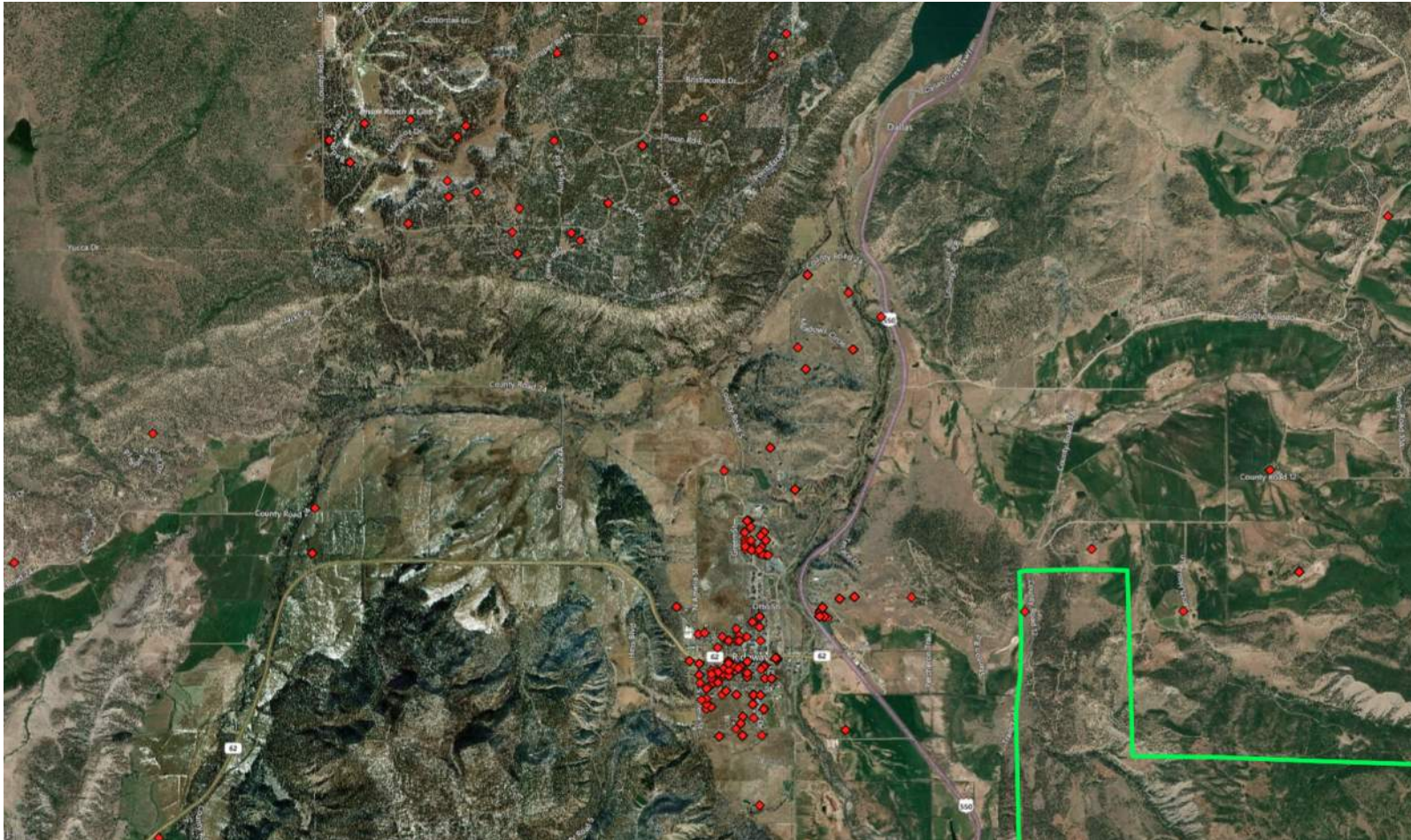
<u>Projections based upon 3 year weighted average (Modified)</u>	K	1	2	3	4	5	6	7	8	9	10	11	12	(K-5)	(6-8)	(9-12)	(K-12)	<u>PS</u>	Tot w PS	Net Growth
<b>2020</b>	23	24	24	31	25	24	31	23	30	19	31	18	26	<b>181</b>	<b>54</b>	<b>94</b>	<b>328</b>	24	352	-2
<b>2021</b>	24	21	25	24	33	26	26	29	23	30	15	31	17	<b>177</b>	<b>52</b>	<b>92</b>	<b>322</b>	24	346	-6
<b>2022</b>	24	18	22	25	26	34	28	24	29	22	26	15	29	<b>176</b>	<b>53</b>	<b>93</b>	<b>322</b>	24	346	0
<b>2023</b>	24	15	19	22	27	27	36	26	24	28	19	26	14	<b>170</b>	<b>50</b>	<b>87</b>	<b>307</b>	24	331	-15
<b>2024</b>	25	25	16	20	24	29	29	35	27	23	25	18	24	<b>167</b>	<b>62</b>	<b>90</b>	<b>318</b>	24	342	11
<b>2025</b>	25	25	26	17	22	26	31	28	36	26	19	24	16	<b>171</b>	<b>64</b>	<b>85</b>	<b>320</b>	24	344	1
<b>2026</b>	25	25	27	28	19	23	27	30	28	35	22	18	22	<b>174</b>	<b>58</b>	<b>97</b>	<b>329</b>	24	353	10
<b>2027</b>	25	26	27	28	29	21	25	27	30	27	31	21	17	<b>181</b>	<b>57</b>	<b>96</b>	<b>333</b>	24	357	4

# Student Distribution – District-wide





# Student Distribution – Greater Ridgway



# Student Distribution – Ridgway Town Core



# Discussion / Questions