

ACTIVATE CAMPUS

**EDUCATIONAL
EXPERIENCE**

**ENROLLMENT
INITIATIVES**

ACTIVATE CAMPUS

**EDUCATIONAL
EXPERIENCE**

**ENROLLMENT
INITIATIVES**

Make Campus All Inclusive

Creating an all-inclusive campus necessitates integrating universal design strategies to ensure accessibility and equity for all students and staff. Implementing appropriate door hardware throughout all rooms ensures ease of access for individuals with varying physical abilities. Furthermore, offering all-gender restroom options in every facility promotes inclusivity and accommodates diverse gender identities. Additionally, incorporating wellness and mothers' rooms in each building provides essential spaces for relaxation, privacy, and childcare support, fostering a supportive environment for all members of the campus community. Through these measures, the campus can truly embody inclusivity, accessibility, and equality for everyone.



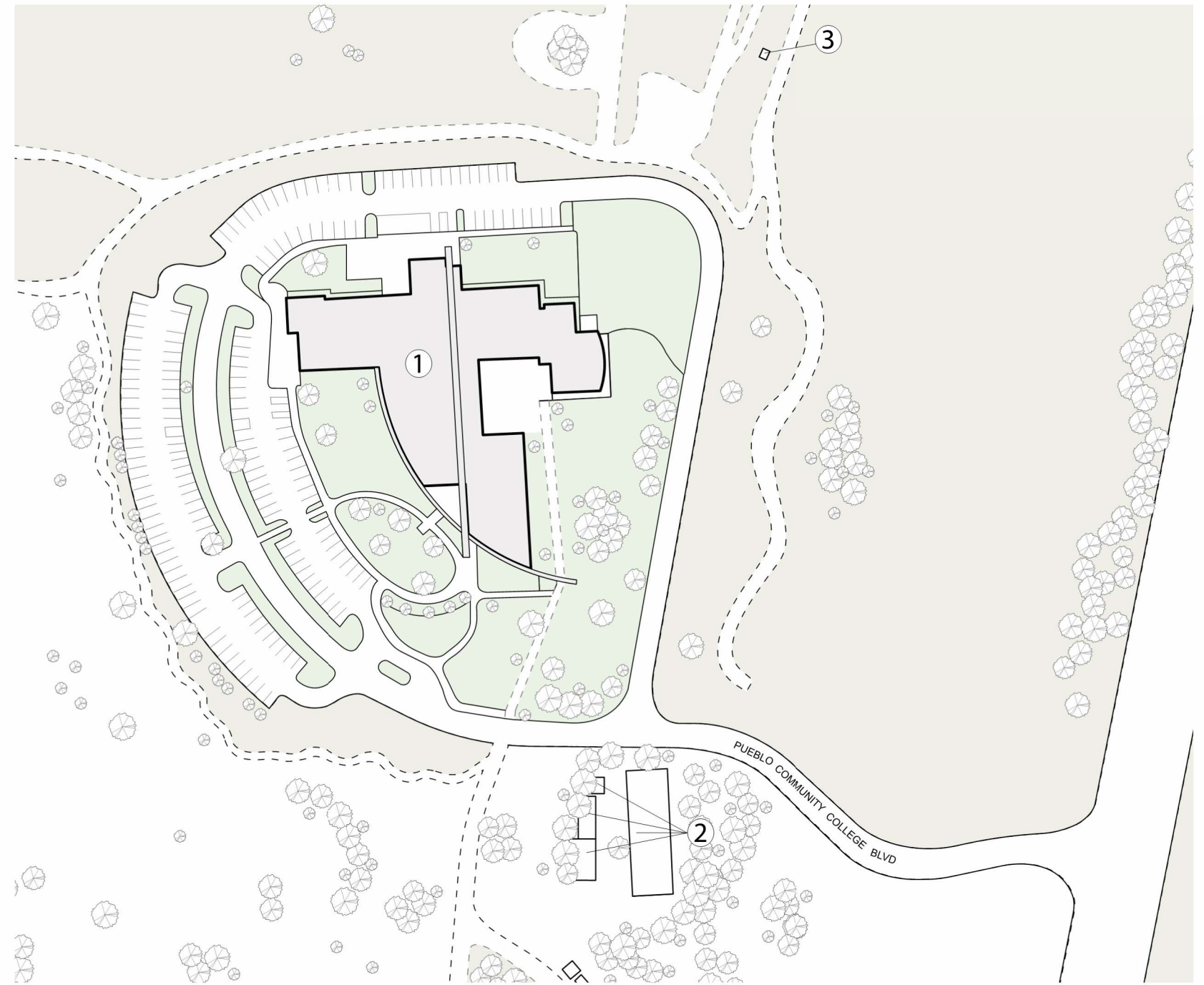
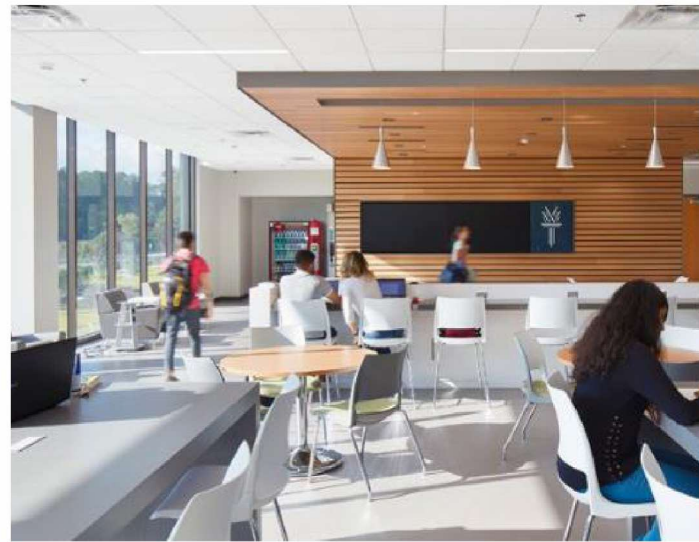
ACTIVATE CAMPUS

**EDUCATIONAL
EXPERIENCE**

**ENROLLMENT
INITIATIVES**

Student Flex Spaces

Integrating active learning via student flex spaces across campus, with a particular focus on academic buildings, is paramount for fostering dynamic educational experiences. These spaces should prioritize adaptability and inclusivity, offering a neurodiverse atmosphere where students can engage in various forms of studying and collaboration. By incorporating versatile environments that cater to diverse learning styles and needs, such as quiet study areas, collaborative zones, and technology-rich hubs, the campus supports both students and faculty in maximizing their potential. Embracing this multifaceted approach to learning environments ensures that every individual has the opportunity to thrive academically and creatively, promoting a culture of innovation and inclusivity throughout the campus community.

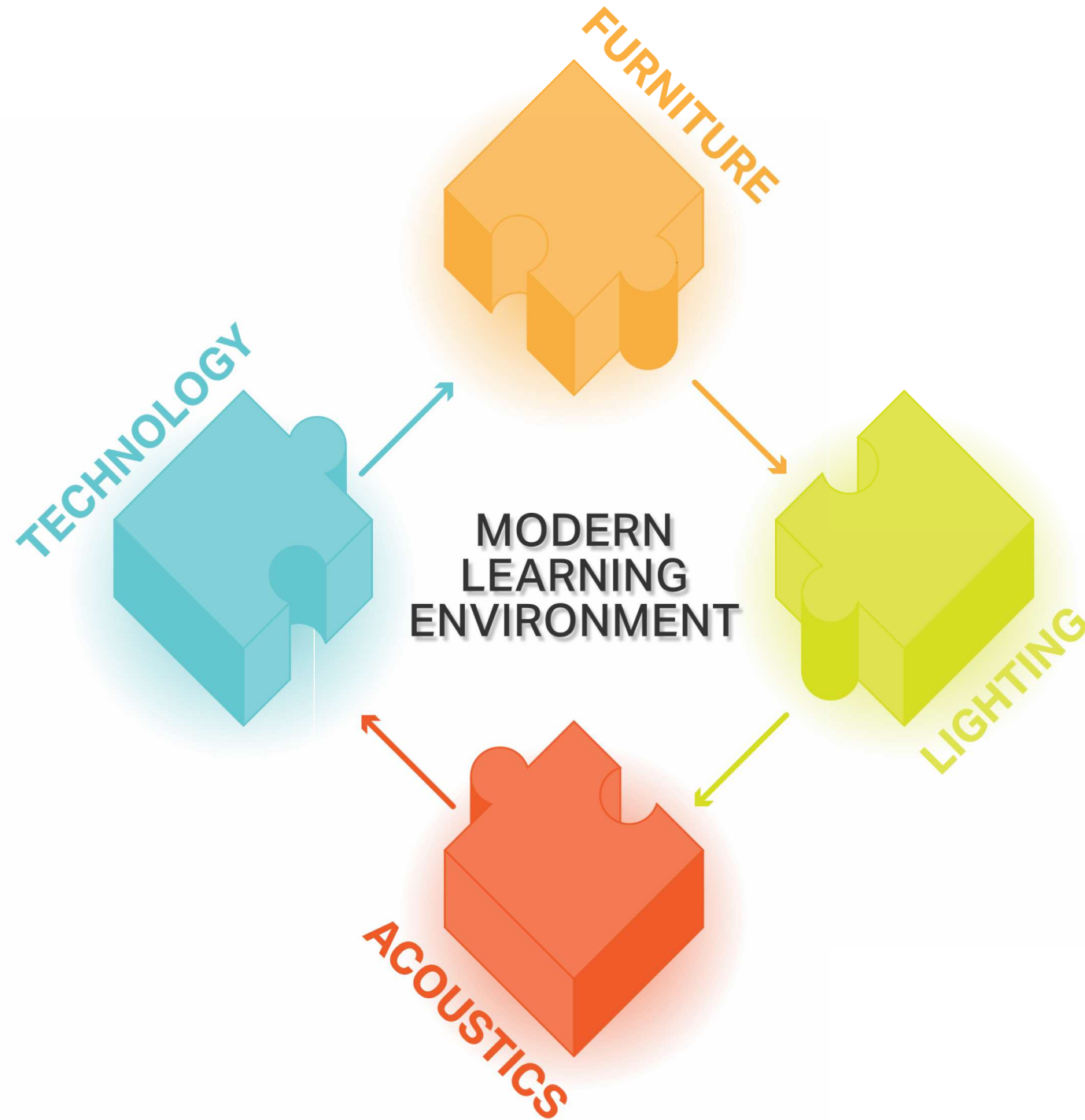


- ① FREMONT CAMPUS MAIN BUILDING
- ② HISTORIC STRUCTURES
- ③ HERITAGE TRAIL DISC GOLF COURSE



Modern Learning Environment

Pueblo Community College can significantly enhance its educational experience by prioritizing modern classroom strategies that cater to diverse learning needs. Incorporating proper lighting, including daylight where possible, creates a more conducive learning environment that fosters alertness and engagement among students. Adaptive furniture promotes comfort and flexibility, accommodating various learning styles and physical needs. Improved acoustics ensure clear communication and minimize distractions, enhancing the overall classroom experience. Embracing modern technology, such as sound reinforcement systems for the hearing impaired and listening devices for language translation, promotes language equity and accessibility for all students. By integrating these elements, the college creates inclusive and dynamic learning spaces that empower all students to thrive.



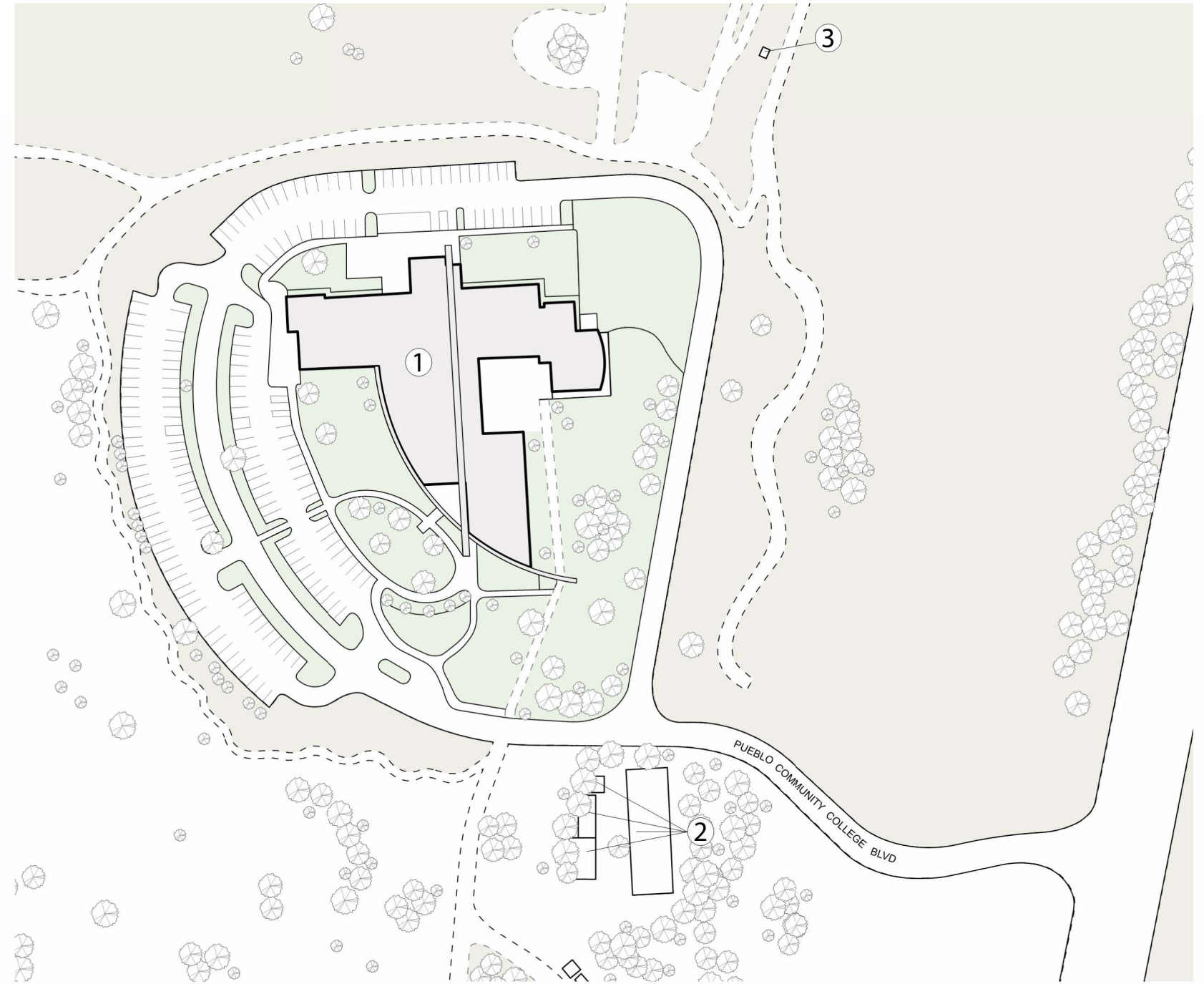
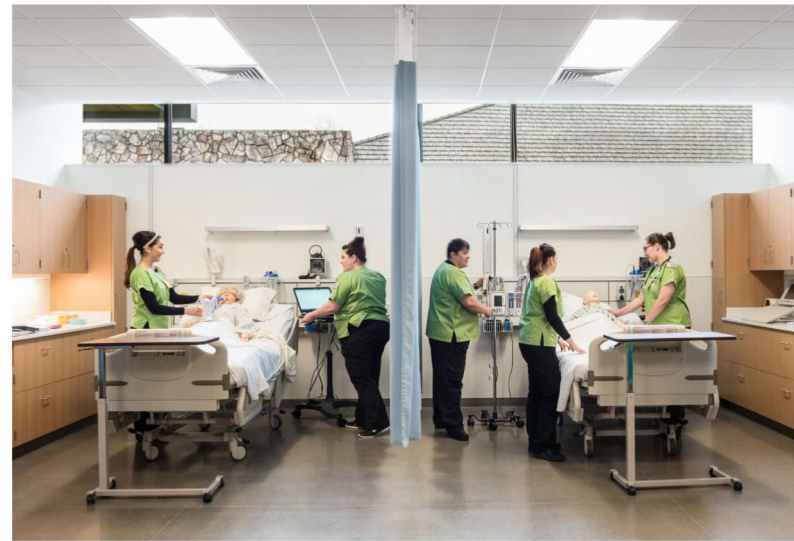
ACTIVATE CAMPUS

**EDUCATIONAL
EXPERIENCE**

**ENROLLMENT
INITIATIVES**

Emphasized Career & Technical Education

Pueblo Community College can elevate its focus on Career and Technical Education (CTE) by centralizing all programs into a single or multiple dedicated buildings on campus, solidifying CTE as a cornerstone of the college's mission. By consolidating these programs, the college enhances accessibility and visibility, reinforcing its commitment to providing high-quality vocational training. Moreover, reintegrating off-site programs onto campus fosters a cohesive learning environment and strengthens community engagement. This strategic approach not only streamlines resources but also bolsters the college's reputation as a hub for innovative CTE initiatives, preparing students for success in today's competitive workforce.



- ① FREMONT CAMPUS MAIN BUILDING
- ② HISTORIC STRUCTURES
- ③ HERITAGE TRAIL DISC GOLF COURSE

