



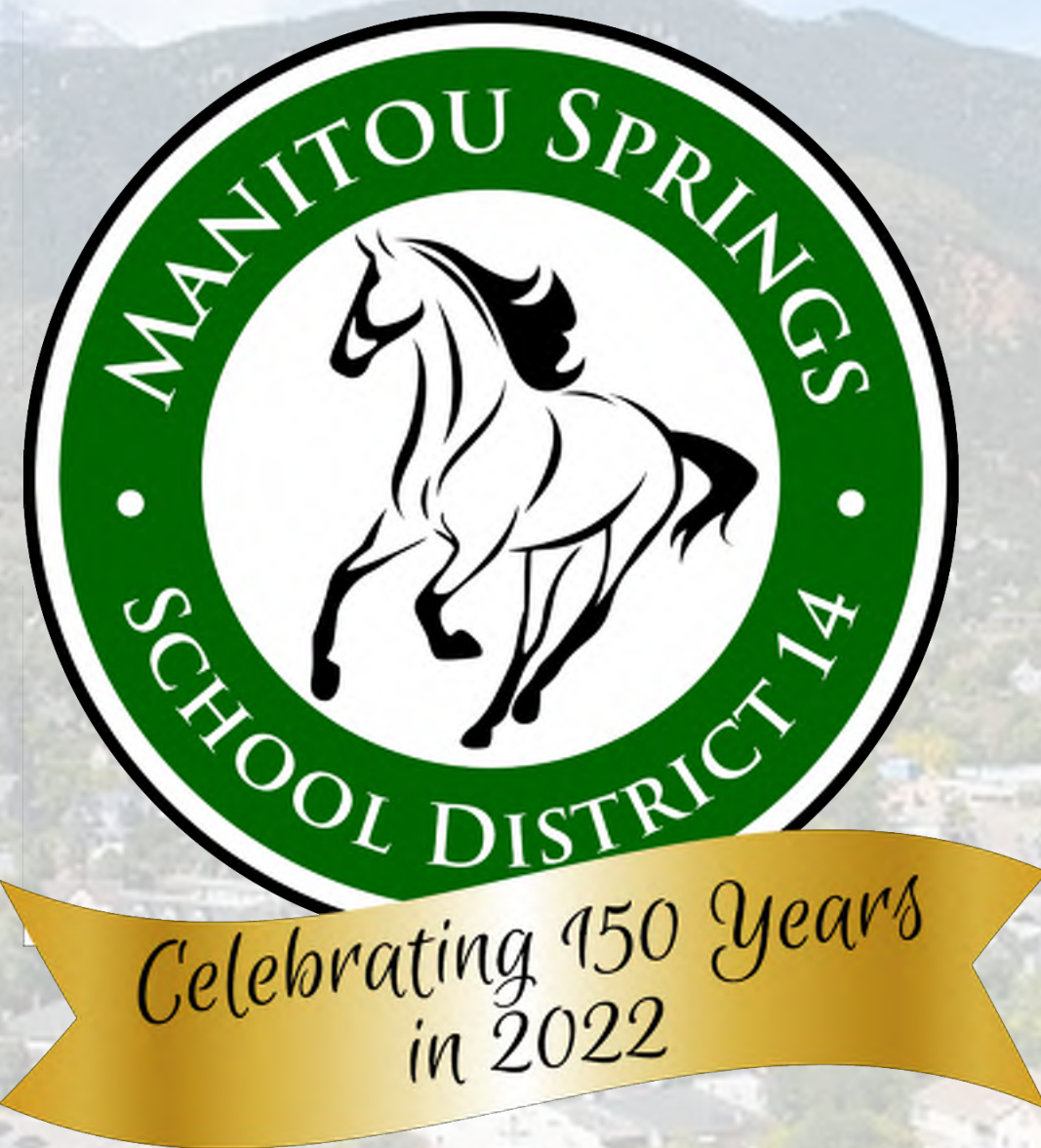
## MEETING ATTENDANCE

Project: Manitou Springs School District Master Plan Update – Planning Advisory Team (PAT)

Project Number: 2022-051.03

1PAT #1 10.5.2022	PAT #2 11.9.2022	PAT #3 11.30.2022	PAT #4	NAME	REPRESENTING	PHONE	EMAIL ADDRESS
X	X			Doug Abernethy	RTA	719.471.7566	doug@rtaarchitects.com
X	X	X		Ken Gregg	RTA	719.471.7566	ken@rtaarchitects.com
X	X	X		Ericka Everett	RTA	719.471.7566	ericka@rtaarchitects.com
	X	V		Christine Costa	RTA	719.471.7566	christine@rtaarchitects.com
X	X			Matt Wilhelm	Wember Inc.	720.737.9638	mwilhelm@wemberinc.com
X		X		Jane Anderson	MSSD Safety & Security	719.373.9139	janderson@mssd14.org
X	X			Carrie Dunlap	MSES	303.910.0027	cdunlap@mssd14.org
X	X	X		Suzi Thompson	MSSD	719.339.3573	sthompson@mssd14.org
X	X			Brooks Williams	Nunn Construction/Parent	719.494.3505	bwilliams@nunnconstruction.com
X	X	X		Elizabeth Domangne	MSSD	719.502.5387	edomangue@mssd14.org
X	X	X		Stuart Cross	MSSD	719.433.3669	scross@mssd14.org





# Manitou Springs School District Master Plan Update

## PAT Meeting #3

November 30, 2022

# Meeting Agenda

1. Sustainability Considerations
2. Middle School Study
3. Principal's Questionnaire Update?
4. Next Steps



# PAT Schedule

*Wednesdays @ 4:30pm - 6:00pm*

10.5.2022

## **PAT #1**

*Introductions  
SWOT*

11.09.2022

## **PAT #2**

*Review Findings – Capacities, Building Conditions, Opportunities*

11.30.2022

## **PAT #3**

*Review Preliminary Master Plan Options*

12.14.2022

## **PAT #4**

*Review Refined Options  
Select Preferred Option (?)*



# Guiding Principles



- *Build on the strong traditions of Manitou Springs to foster community connection, access and pride.*
- *Create engaging learning environments for students and staff that embraces the unique character of the mountain valley.*
- *Establish safe and secure campuses that improve accessibility and access for all.*
- *Honor values of financial stewardship and facilitate decision making that improves long-term operational efficiency.*
- *Maintain clear, honest communication with stakeholders to ensure solutions align the needs of the school district and community.*









# Connection to the Outdoors





Engaging Learning Environments

Manitou Springs School District  
PAT Meeting #3





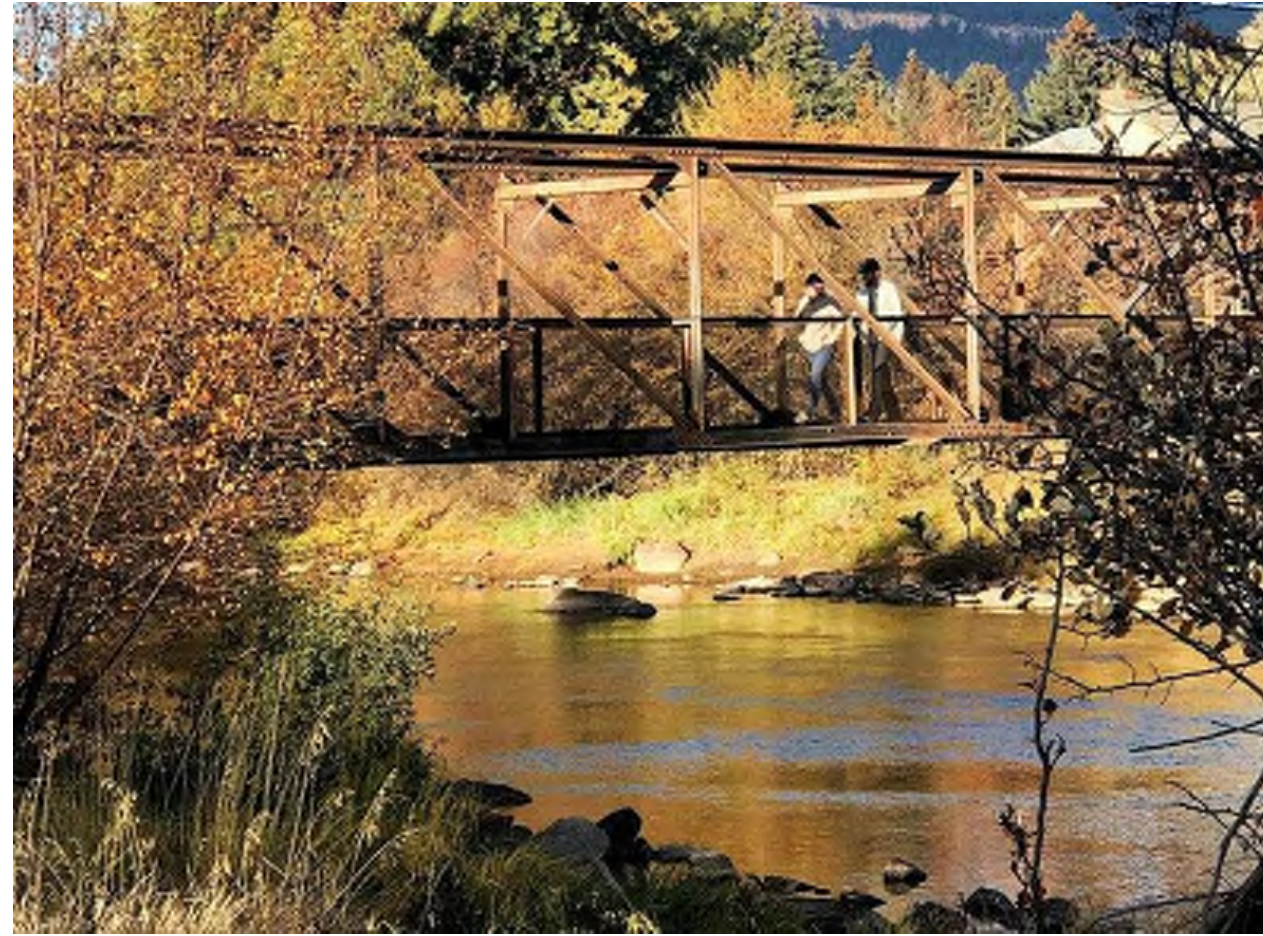


Engaging Learning Environment

Manitou Springs School District  
PAT Meeting #3







## Connection & Access

Manitou Springs School District  
PAT Meeting #3



# Guiding Principles



- *Build on the strong traditions of Manitou Springs to foster community connection, access and pride.*
- *Create engaging learning environments for students and staff that embraces the unique character of the mountain valley.*
- *Establish safe and secure campuses that improve accessibility and access for all.*
- ***Honor values of financial stewardship and facilitate decision making that improves long-term operational efficiency.***
- ***Maintain clear, honest communication with stakeholders to ensure solutions align the needs of the school district and community.***

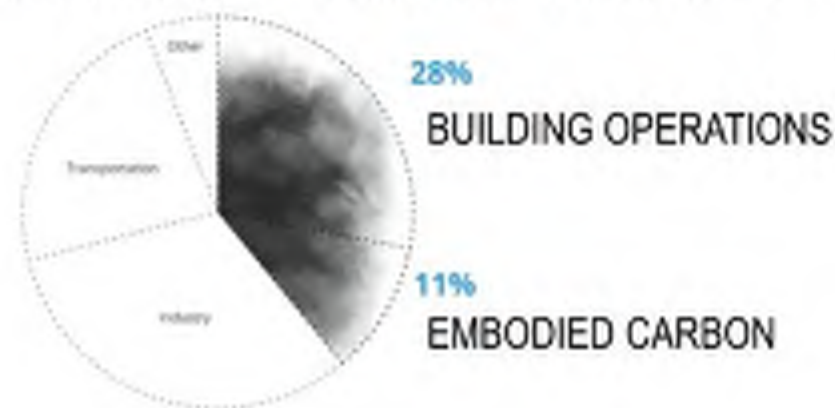


# EMBODIED CARBON STUDY

EMBODIED CARBON IS TOTAL EMISSIONS PRODUCED DURING THE LIFE CYCLE OF A MATERIAL SHOWN BELOW



ANNUAL CARBON EMISSIONS IN THE U.S.



**RENOVATION**  
of Ridgway  
Elementary  
501,795 kg CO<sub>2</sub>e

**VS.**

**NEW BUILD**  
of Ridgway  
Elementary  
1,401,560 kg CO<sub>2</sub>e

Carbon Emissions Saved = 899,765 kg CO<sub>2</sub>e

899,765 kg CO<sub>2</sub>e is the equivalent of:

- Carbon offset of 5,387 trees for a year or



- Removing 195 cars from the roads for a year





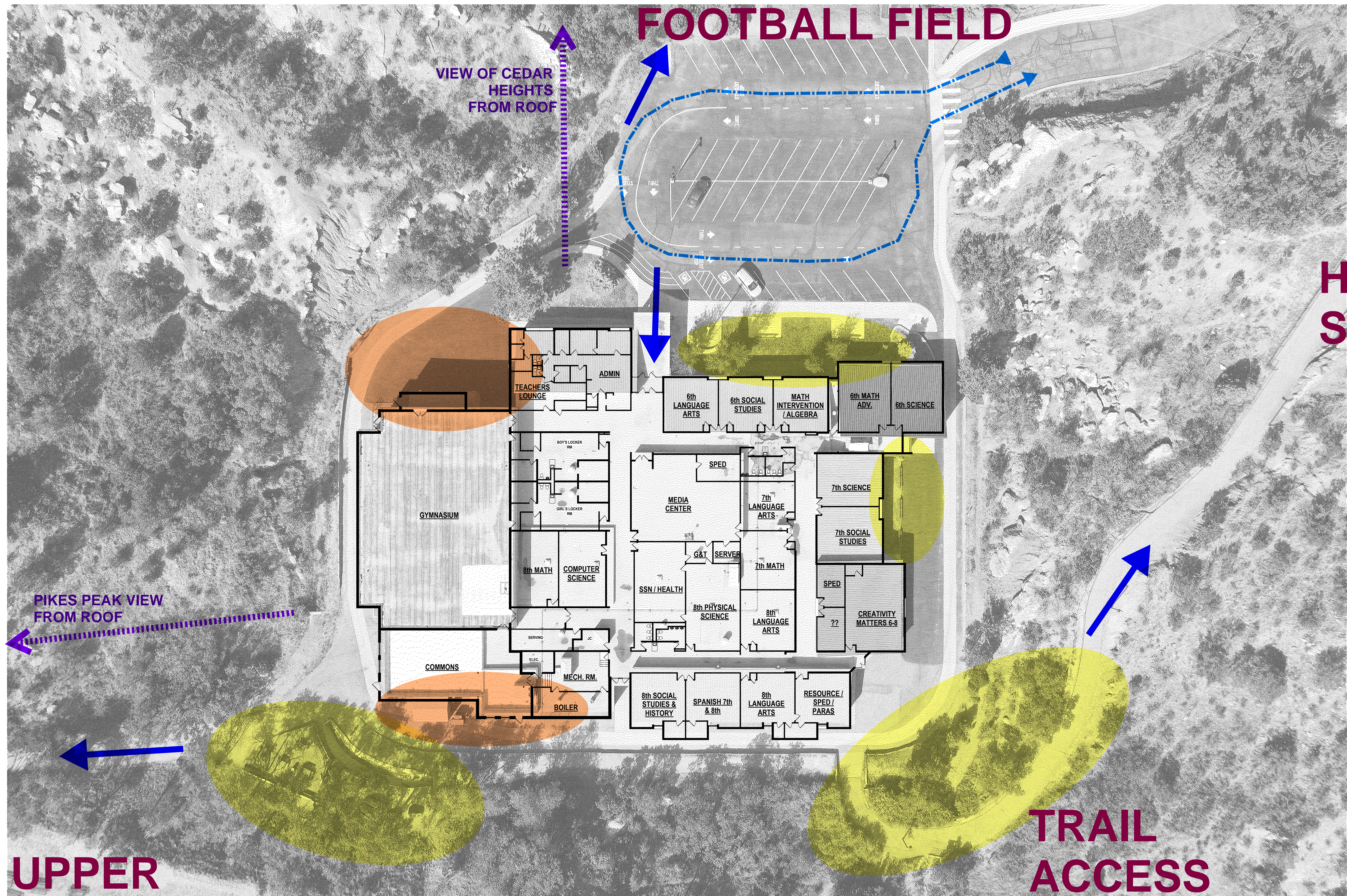


# Middle School Site Concepts



Thank you!





HIGH SCHOOL

UPPER FIELD

TRAIL ACCESS

## SITE ANALYSIS / EXISTING CONDITIONS

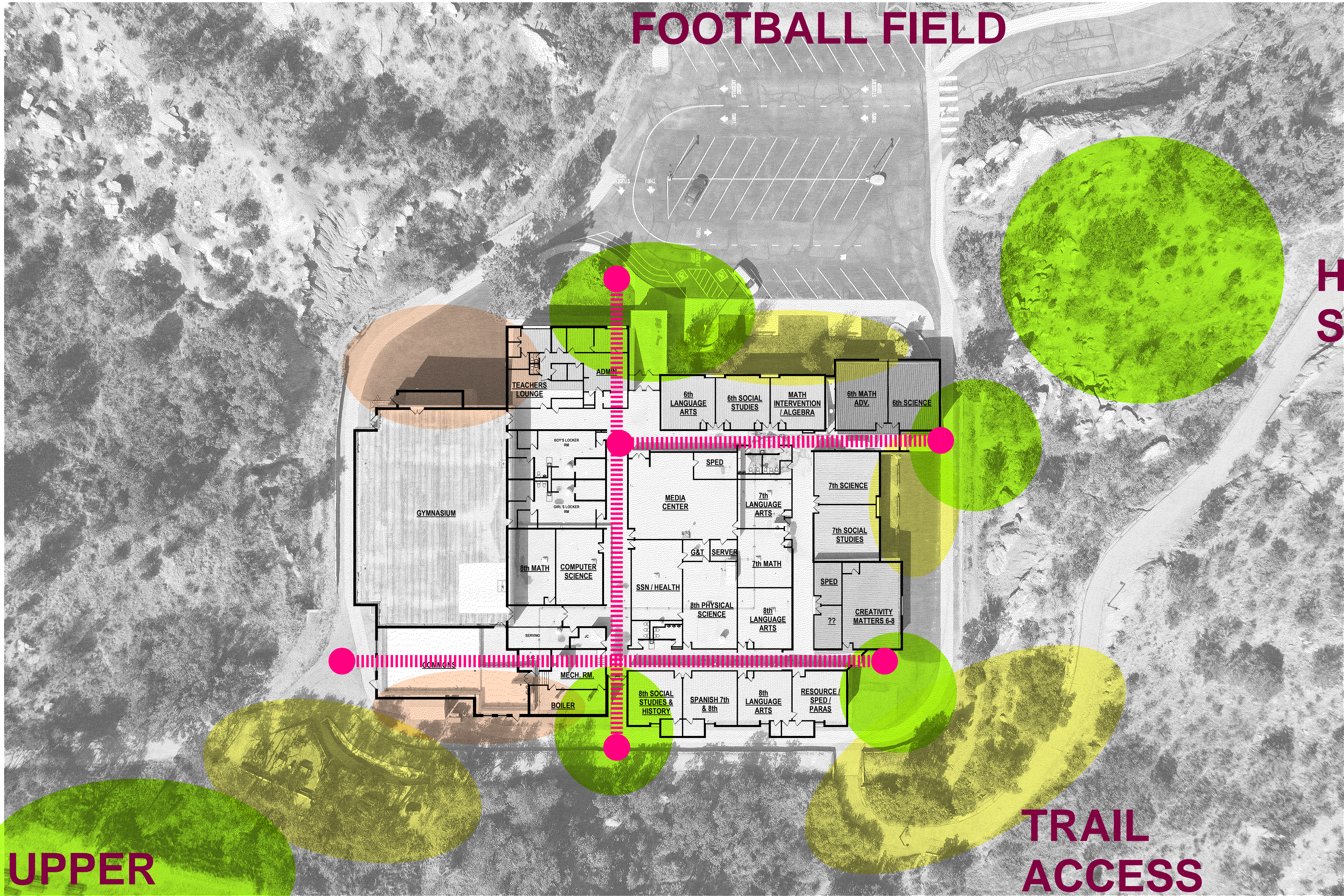


ISSUED DATE  
11/22/22

19 SOUTH TEJON ST., SUITE 300  
COLORADO SPRINGS, CO. 80903  
TEL: 719-471-7556  
FAX: 719-471-1174  
www.rtaarchitects.com







UPPER  
FIELD

FOOTBALL FIELD

HIGH  
SCHOOL

TRAIL  
ACCESS

## SITE & BUILDING ANALYSIS

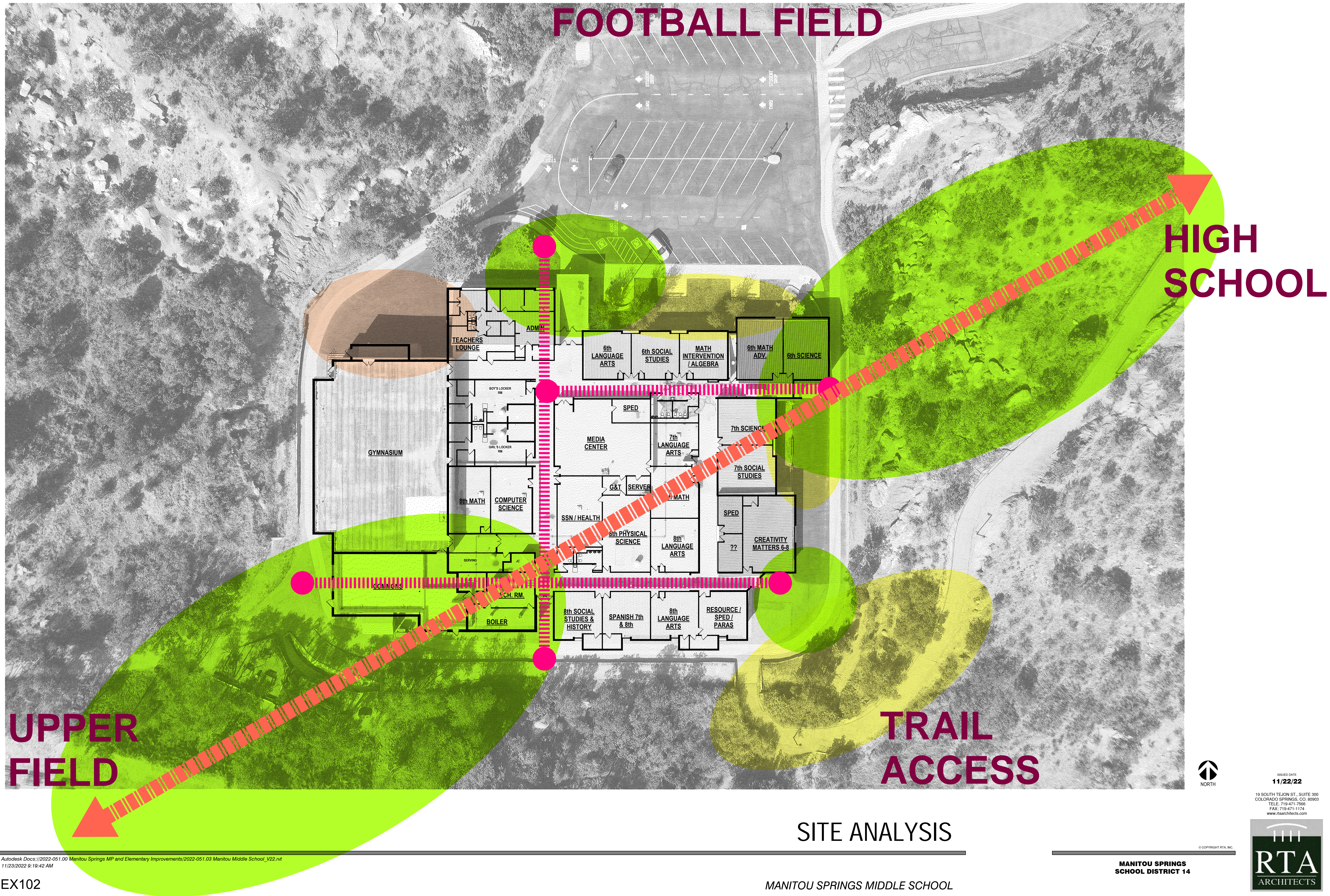


ISSUED DATE  
11/22/22

19 SOUTH TEJON ST., SUITE 300  
COLORADO SPRINGS, CO. 80903  
TELE: 719-471-7556  
FAX: 719-471-1174  
www.rtaarchitects.com









# HIGH SCHOOL





**FOOTBALL FIELD**

**UPPER**

**TRAIL ACCESS**

**ROAD TO FIELD**

**PEDESTRIAN BRIDGE FROM SECOND FLOOR**

**OUTDOOR CONNECTION**

**NEW ENTRY**

**ADMIN**

**MECH**

**2 STORY ADDITION**

**COMMONS**

**ART**

**MUSIC**

**CLASSROOMS**

**GYMNASIUM**

**BOYS LOCKER**

**GIRLS LOCKER**

**SERVING KITCHEN**

**MEDIA CENTER**

**STEM**

**SCIENCE**

**MAKER**

**8th LANGUAGE ARTS**

**8th SOCIAL STUDIES**

**8th MATH ADV.**

**8th SCIENCE**

**7th SCIENCE**

**7th SOCIAL STUDIES**

**SPED**

**CREATIVITY MATTERS 6-8**

**8th LANGUAGE ARTS**

**8th SOCIAL STUDIES**

**8th MATH**

**8th SCIENCE**

**BREAK-OUT**

**OUTDOOR CONNECTION**

**STAIRS TO HS**

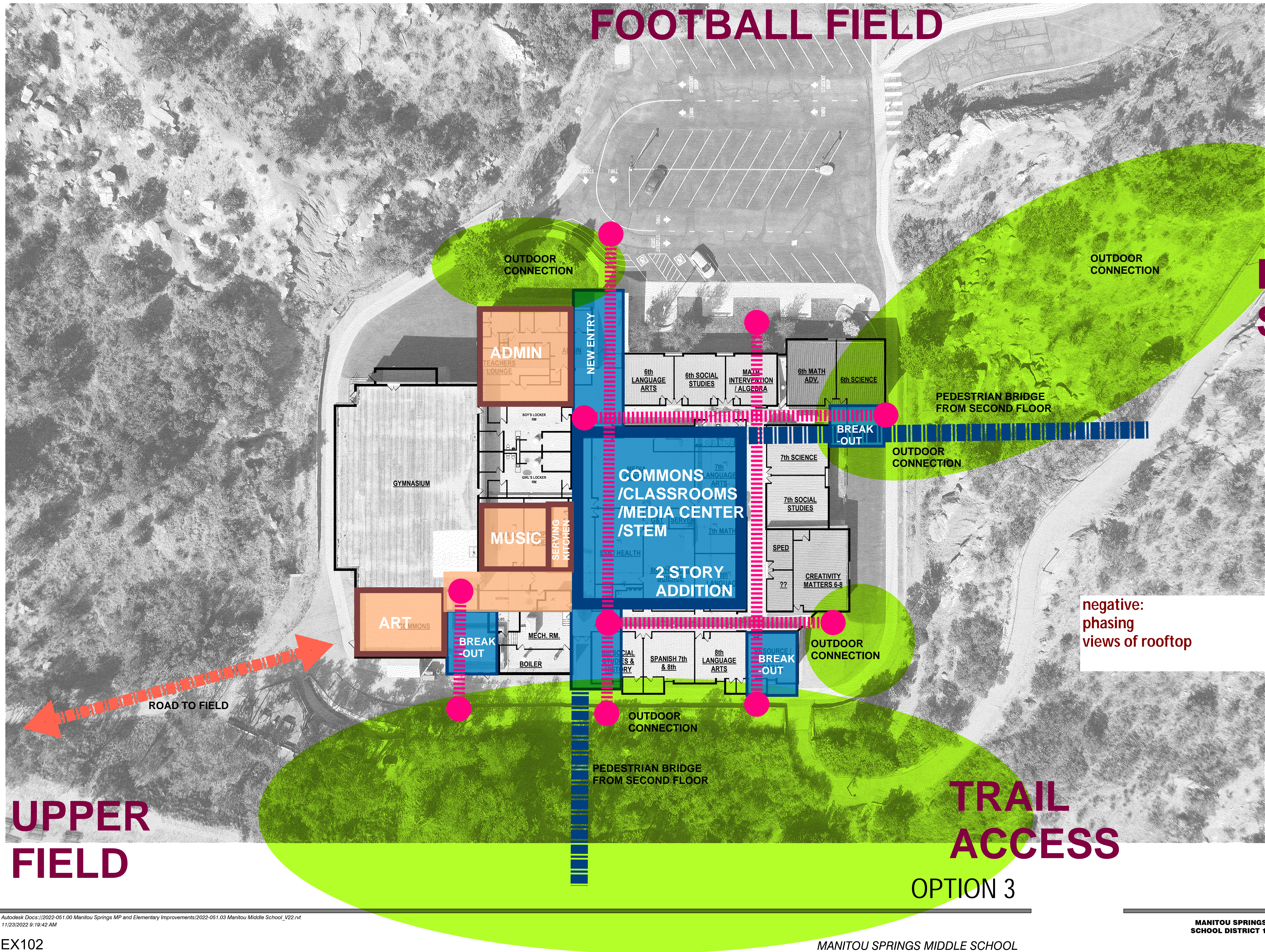
# UPPER FIELD

# TRAIL ACCESS

## OPTION 2

MANITOU SPRINGS MIDDLE SCHOOL





HIGH SCHOOL

UPPER FIELD

TRAIL ACCESS

OPTION 3







## VIEWS FROM THE ROOF







**EXISTING OUTDOOR  
"SERVICE" AREAS**



# MS/HS CONNECTION





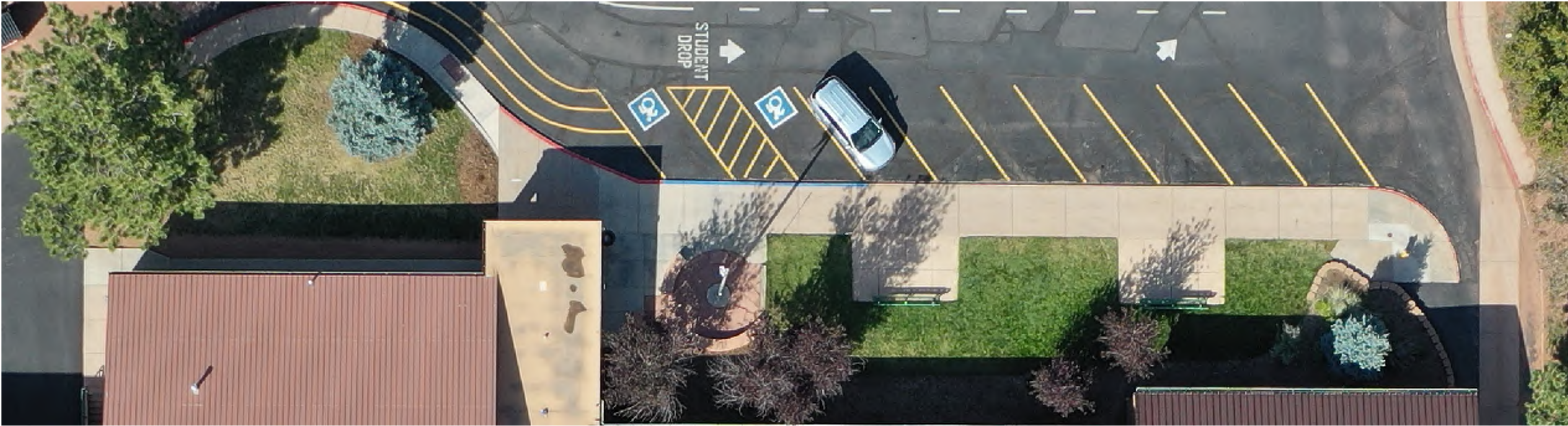






**UPPER FIELD**





**EXISTING  
OUTDOOR  
SPACES**





ISSUED DATE  
**11/22/22**

19 SOUTH TEJON ST., SUITE 300  
COLORADO SPRINGS, CO. 80903  
TELE: 719-471-7556  
FAX: 719-471-1174  
www.rtaarchitects.com

