



MEETING RECORD

PROJECT: Montrose County School District Master Plan

PROJECT NO: 2021-004.00

DATE: 6/09/21

ATTENDEES: See Attached Sheet

SUBJECT: Planning Assistance Team Meeting #3

1. Ken discussed the prerecorded presentations that were put together to allow the group to review the information prior to the meeting. The intent is to allow review of information prior to the meeting so the group can begin work and discussions quicker and more efficiently.
2. Ericka presented at a high level the information presented in the recorded presentation. The presentation includes the site plans and building plans for the Middle Schools and High Schools.
 - a. Capacity analysis have been separated out on separate plans. Anticipated enrollment in 2021 and 2025 have been included in each of the capacity analysis.
 - b. Based on demographics, the high school will be at or over capacity in the next five years.
3. Individual groups discussed the presented information and then reported out. Comments follow:
 - a. Middle Schools are in good shape from a capacity standpoint. The emphasis at the middle schools would be about enriching and improving the learning environments.
 - b. The big question or elephant in the room is the condition of the high school facility. How do you complete a new project and allow students to continue to go to school there?
 - c. Does the land where the high school sits have enough value as a commercial location to allow the high school to be planned elsewhere?
 - d. The group asked if the middle schools have capacity, could the 9th grade be moved down to the middle schools. Dr. Stevenson pointed out that the move to separate the 9th grade from the Jr High model is still valid. It makes more sense to have the 9th grade included with the high school.
 - e. The groups discussed at a high level options for the high school facility.
 - i. A new high school on a new site and sell current high school site
 - ii. A new smaller high school on another site.
 - iii. Building replacement on the existing site.
 - f. There is a potential for partnerships with CMU.
 - g. There is a question of community perspective around relocating the high school. Will the community react negatively if the high school is moved from downtown.
 - h. The center of Centennial MS classroom areas is dark and there may be an opportunity to add skylights and some natural light.
 - i. Future discussions regarding CTE are needed. How do you stay forward thinking?
 - j. There are options to update the high school utilization rate with use of shared classrooms.
 - k. The group noted that the designs should avoid trends.
4. Ken reviewed the Building Deficiency Matrix and the scoring strategies. This allows individual repair items to be scored and sorted based on need. The group agreed with the approach.

19 South Tejon Street, Suite 300 - Colorado Springs, CO 80903 - Tel: 719-471-7566 Fax: 719-471-1174



MEETING ATTENDANCE

Project: Montrose County School District Master Plan

Project Number: 2021-004.00

PAT #1 4/1/21	PAT #2 5/2/21	PAT #3 6/9/21																			NAME	REPRESENTING	PHONE	EMAIL ADDRESS
X	X	X																			Penny Harris	MCS D ECC	970-249-5858	Penelope.harris@mcsd.org
X	X																				Sandy Head	Montrose Economic Dev Corp	970-249-9438	sandyh@montroseedc.org
X																					Eric Kelley	MCSB	970-210-6529	ekbarbor70@icloud.com
X	X	X																			Blaine Hall	Montrose PD	970-209-8045	bhalle@cityofmontrose.
X	X	X																			Michelle Gottlieb	Olathe	970-209-1002	Michelle_otv@questoffice.net
X	X	X																			Jack Schulte	PAT Member	970-249-1509	Funefarm1@outlook.com
X	X																				Thom Miller	Community/Parent	719-298-1985	thommiller@gmail.com
X		X																			Sue Hansen	Montrose County	970-596-0620	Shannon@motrosecounty.net
X	X	X																			Matt Jenkins	MCS D	423-718-7865	Thomas.Jenkins@mcsd.org
X																					Steve Gottlieb	Olathe	970-209-1003	Steve@questoffice.net
	X																				Reilly O'Brien	DPM	303-775-5051	Reilly.obrien@dynamiccpm.co
	X																				Leann Tobin	MMH	970-275-0456	ltobin@montrosethospital.com
	X	X																			Barbara Bynum	City of Montrose	970-901-9191	bbynum@ci.montrose.co.os
X	X	X																			Carrie Stephenson	MCS D	970-252-7902	Carrie.Stephenson@mcsd.org
X	X	X																			Philip Baily	MCS D	970-249-2653	Philip.Bailey@mcsd.org
X	X	X																			Mari Steinbach	Montrose Recreation District		mari@montroserec.com
		X																			Colleen Kaneda	DPM		colleen.kaneda@dynamiccpm.co



Montrose County School District Master Plan PAT Meeting #3

June 9, 2021



COLUMBINE MIDDLE SCHOOL

SCALE: 1" = 200'

KEY PLAN LEGEND

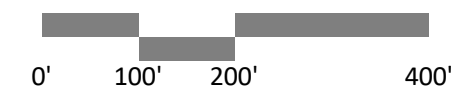
1. MAIN SCHOOL BUILDING
2. BUS LOOP
3. STAFF PARKING
4. FOOTBALL FIELD
5. PLAYFIELD / SOCCER
6. OUTDOOR PLAY
7. STAFF PARKING
8. STAFF / VISITOR PARKING
9. PARENT PICK-UP / DROP-OFF
10. CITY PARK

SITE PLAN LEGEND

- SITE BOUNDARY
- PERMANENT BUILDING FOOTPRINT
- PARENT PICK-UP / DROP-OFF LOOP
- BUS PICK-UP / DROP-OFF
- STUDENT ENTRY POINTS
- DISTRICT SERVICE DRIVE / ENTRY



NORTH



COLUMBINE MIDDLE SCHOOL

EDUCATIONAL DEPARTMENT LEGEND

- Administration
- Art/Music
- Breakout Instruction
- CTE
- Dining/Common
- Instructional Areas
- Library Information Center
- PE/Athletics
- Special Education
- Support

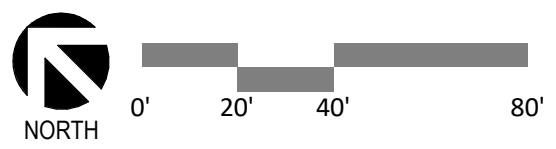
CLASSROOM CAPACITY

CLASSROOM	NUMBER	AREA	# TEACHING STATIONS	DISTRICT CAPACITY*
*District estimate used for planning purposes				
Art/Music				
ART	81	1041 SF	1	30
BAND	55	1430 SF	1	30
MUSIC	51	973 SF	1	30
Breakout Instruction				
COMPUTER	35	181 SF	1	
ESS	5	591 SF	1	
ESS	7	594 SF	1	
INTERVENTION	36	201 SF	1	
INTERVENTION	38	822 SF	1	
INTERVENTION	69	821 SF	1	
INTERVENTION	84	817 SF	1	
RSS	6	590 SF	1	
CTE				
COMPUTER	3	1608 SF	1	30
HOME EC	2	1732 SF	1	30
STEM	97	1151 SF	1	30
STEM	98	1162 SF	1	30
Instructional Areas				
ELA	40	834 SF	1	30
ELA	41	821 SF	1	30
ELA	70	834 SF	1	30
ELA	71	821 SF	1	30
ELA	85	834 SF	1	30
ELA	86	821 SF	1	30
MATH	43	820 SF	1	30
MATH	88	919 SF	1	30
MATH / SCIENCE	73	919 SF	1	30
MATH / SCIENCE	75	918 SF	1	30
SCIENCE	39	918 SF	1	30
SCIENCE	42	919 SF	1	30
SCIENCE	90	916 SF	1	30
SOCIAL SCIENCE	72	819 SF	1	30
SOCIAL SCIENCE	87	819 SF	1	30
PE/Athletics				
GYMNASIUM	103	9444 SF	1	30
HEALTH	105	752 SF	1	30
Special Education				
SPED	4	888 SF	1	15
GRAND TOTAL:	33	37727 SF	33	735



FLOOR PLAN - CAPACITY

1" = 40'-0"



75% UTILIZATION 552 students

ANTICIPATED ENROLLMENT:
 2021 507 students
 2025 488 students





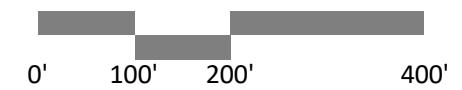
CENTENNIAL MIDDLE SCHOOL
SCALE: 1" = 200'

KEY PLAN LEGEND

1. MAIN SCHOOL BUILDING - SOUTH
2. MAIN SCHOOL BUILDING - NORTH
3. INDUSTRIAL ARTS BUILDING
4. PARENT PICK-UP / DROP OFF
5. VISITOR PARKING
6. STAFF PARKING
7. OUTDOOR PLAY
8. PLAY FIELD
9. TRACK & FIELD / FOOTBALL FIELD

SITE PLAN LEGEND

- SITE BOUNDARY
- PERMANENT BUILDING FOOTPRINT
- ← PARENT PICK-UP / DROP-OFF LOOP
- ← BUS PICK-UP / DROP-OFF
- ▲ STUDENT ENTRY POINTS
- ▲ DISTRICT SERVICE DRIVE / ENTRY



CENTENNIAL MIDDLE SCHOOL - SOUTH



EDUCATIONAL DEPARTMENT LEGEND

- Administration
- Art/Music
- Breakout Instruction
- CTE
- Dining/Common
- Instructional Areas
- Library Information Center
- PE/Athletics
- Special Education
- Support

CLASSROOM CAPACITY

ROOM	NUMBER	AREA	# TEACHING STATIONS	DISTRICT CAPACITY*
------	--------	------	---------------------	--------------------

*District estimate used for planning purposes

Art/Music				
ART	84	999 SF	1	30
BAND ROOM	68	1250 SF	1	30
CHOIR ROOM	67	905 SF	1	30

Breakout Instruction				
CLP / ESL	9	848 SF	1	
COMPUTER LAB	171	842 SF	1	30
GT	42	334 SF	1	
READING INTERV.	32A	498 SF	1	
READING INTERV.	143	764 SF	1	
STEM	32B	501 SF	1	0

CTE				
HOME EC	51	1007 SF	1	30
HOME EC	53	1112 SF	1	30
INDUSTRIAL ARTS	58	2090 SF	1	30

Instructional Areas				
ELA	11	1040 SF	1	30
ELA	12	857 SF	1	30
ELA	13	818 SF	1	30
ELA	38	993 SF	1	30
ELA	39	995 SF	1	30
ELA	44	813 SF	1	30
ELA	136	890 SF	1	30
ELA	137	836 SF	1	30
ELA	141	890 SF	1	30
ELA	142	842 SF	1	30
MATH	35	724 SF	1	30
MATH	41	811 SF	1	30
MATH	49	951 SF	1	30
MATH	50	952 SF	1	30
MATH	57	982 SF	1	30
MATH	135	839 SF	1	30
MATH	140	838 SF	1	30
SCIENCE	45	1171 SF	1	30
SCIENCE	46	817 SF	1	30
SCIENCE	47	1380 SF	1	30
SCIENCE	129	866 SF	1	30
SS	40	723 SF	1	30
SS	138	629 SF	1	30

PE/Athletics				
GYMNASIUM	88	10053 SF	1	30
GYMNASIUM	156	3320 SF	1	30

Special Education				
DCC SPED	155	1391 SF	1	15
SPED	10	932 SF	1	15
SPED	14	335 SF	1	
SPED	15	818 SF	1	15
SPED	59	931 SF	1	15
SPED	60	437 SF	1	
SPED	83	999 SF	1	15
GRAND TOTAL: 44		51022 SF		1035

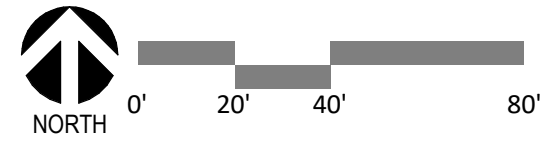
75% Utilization 776 students

ANTICIPATED ENROLLMENT:

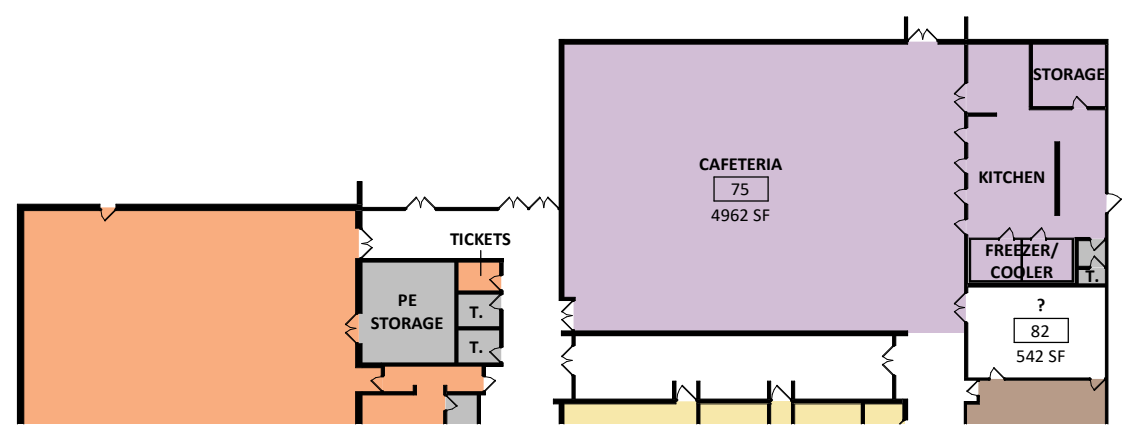
2021 612 students
2025 617 students

FLOOR PLAN - CAPACITY (SOUTH)

1" = 40'-0"



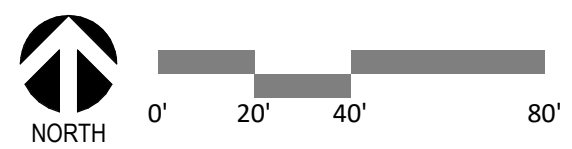
CENTENNIAL MIDDLE SCHOOL - NORTH



- EDUCATIONAL DEPARTMENT LEGEND
- Administration
 - Art/Music
 - Breakout Instruction
 - Dining/Common
 - Instructional Areas
 - PE/Athletics
 - Special Education
 - Support

FLOOR PLAN - CAPACITY (NORTH)

1" = 40'-0"





OLATHE MIDDLE HIGH SCHOOL

scale: 1" = 200'-0"

KEY PLAN LEGEND

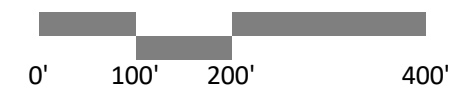
1. MAIN SCHOOL BUILDING
2. PARENT PICK-UP/DROP OFF
3. BUS LOOP
4. STAFF PARKING
5. STAFF / DISTRICT PARKING
6. TRACK & FIELD / FOOTBALL
7. BASEBALL FIELD
8. PLAY FIELD
9. STUDENT PARKING

SITE PLAN LEGEND

- SITE BOUNDARY
- PERMANENT BUILDING FOOTPRINT
- PARENT PICK-UP / DROP-OFF LOOP
- BUS PICK-UP / DROP-OFF
- STUDENT ENTRY POINTS
- DISTRICT SERVICE DRIVE / ENTRY



NORTH



EDUCATIONAL DEPARTMENT LEGEND

- Administration
- Art/Music
- Breakout Instruction
- CTE
- Dining/Common
- Instructional Areas
- Library Information Center
- PE/Athletics
- Special Education
- Support

CLASSROOM CAPACITY

CLASSROOM	NUMBER	AREA	# TEACHING STATION	DISTRICT CAPACITY*
-----------	--------	------	--------------------	--------------------

**District estimate used for planning purposes*

Art/Music				
ART	104	1165 SF	1	30
BAND	201	525 SF	1	15
CHOIR	203	786 SF	1	30

Breakout Instruction				
?	104	501 SF	1	
COLLABORATION CENTER	301	1006 SF	1	
GATE	211	729 SF	1	
READING INTERVENTION	304	820 SF	1	
TECH	204	985 SF	1	

CTE				
BUSINESS	105-A	517 SF	1	15
BUSINESS	105-B	451 SF	1	15
INDUSTRIAL ARTS	101-CC	3629 SF	1	30

Instructional Areas				
CLASSROOM	101-BB	1027 SF	1	30
CLASSROOM	202	763 SF	1	30
ELA	125	750 SF	1	30
ELA	129	747 SF	1	30
ELA	130	746 SF	1	30
ELA	213	768 SF	1	30
ELA	305	858 SF	1	30
ELA	307	846 SF	1	30
EMPTY	208	854 SF	1	30
HEALTH / SCIENCE	127	790 SF	1	30
MATH	120	574 SF	1	30
MATH	121	633 SF	1	30
MATH	124	747 SF	1	30
MATH	206	867 SF	1	30
MATH	308	967 SF	1	30
SCIENCE	116	1117 SF	1	30
SCIENCE	118	995 SF	1	30
SCIENCE	217	1123 SF	1	30
SCIENCE	306	957 SF	1	30
SOCIAL STUDIES	126	732 SF	1	30
SOCIAL STUDIES	128	750 SF	1	30
SOCIAL STUDIES	209	931 SF	1	30
SOCIAL STUDIES	303	824 SF	1	30
SPANISH	122	659 SF	1	30

PE/Athletics				
GYMNASIUM	16	12036 SF	1	30
GYMNASIUM	234	6791 SF	1	30

Special Education				
SPED	103	886 SF	1	15
SPED	123	653 SF	1	15
SPED	207	865 SF	1	15
SPED	302	823 SF	1	15
GRAND TOTAL: 41		53190 SF	41	975

75% Utilization 732 students

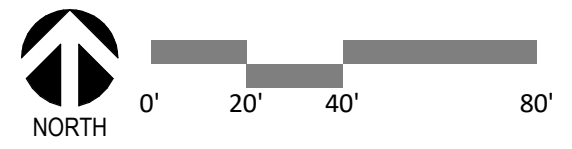
ANTICIPATED ENROLLMENT:

2021 472 students (224 MS / 248 HS)
 2025 504 students (261 MS / 243 HS)



FLOOR PLAN - CAPACITY SOUTH

1" = 40'-0"



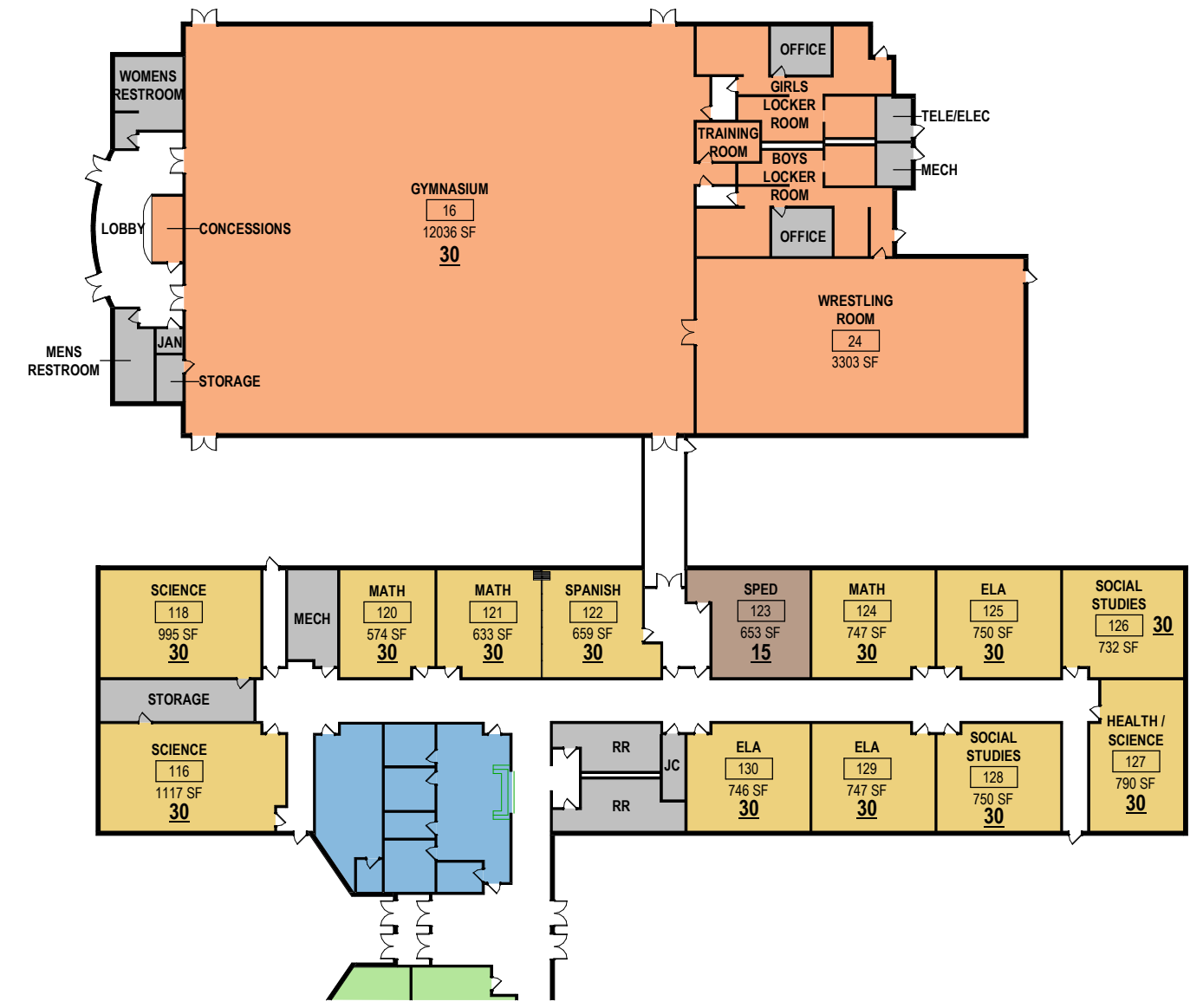
OLATHE MIDDLE HIGH SCHOOL - NORTH

11 - OMHS



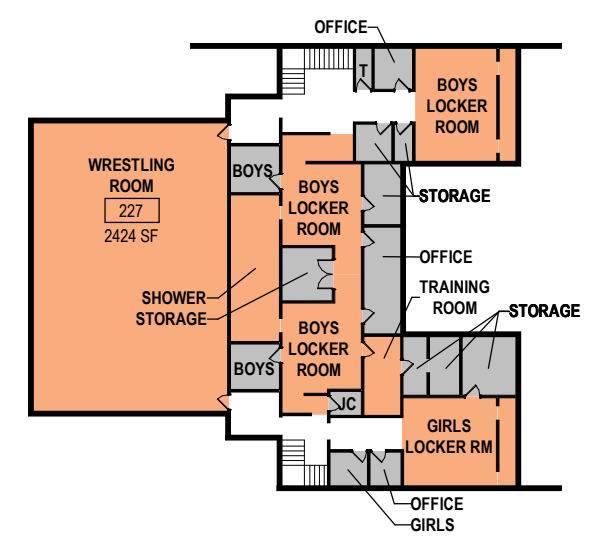
EDUCATIONAL DEPARTMENT LEGEND

- Administration
- CTE
- Instructional Areas
- PE/Athletics
- Special Education
- Support



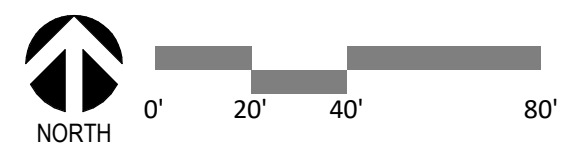
FLOOR PLAN - CAPACITY NORTH

1" = 40'-0"



LOWER LEVEL FLOOR PLAN - CAPACITY

1" = 40'-0"





MONTROSE HIGH SCHOOL

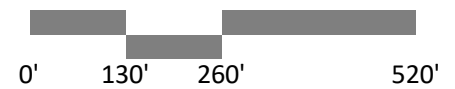
scale: 1" = 260'-0"

KEY PLAN LEGEND

1. MAIN SCHOOL BUILDING
2. ART BUILDING
3. AUTO & AG BUILDING
4. MONTROSE RECREATION DISTRICT PROPERTY
5. TENNIS COURTS
6. SOCCER FIELD
7. SOFTBALL FIELD
8. BASEBALL FIELD
9. SENIOR PARKING LOT
10. STAFF / ROTC PARKING
11. STAFF PARKING
12. JUNIOR PARKING LOT
13. PRACTICE FIELD
14. TRACK & FIELD / FOOTBALL FIELD
15. BUS LOOP
16. SPECIAL EDUCATION PICK-UP / DROP-OFF
17. CONCESSIONS
18. STADIUM BLEACHERS & PRESS BOX
19. BASEBALL PRESS BOX

SITE PLAN LEGEND

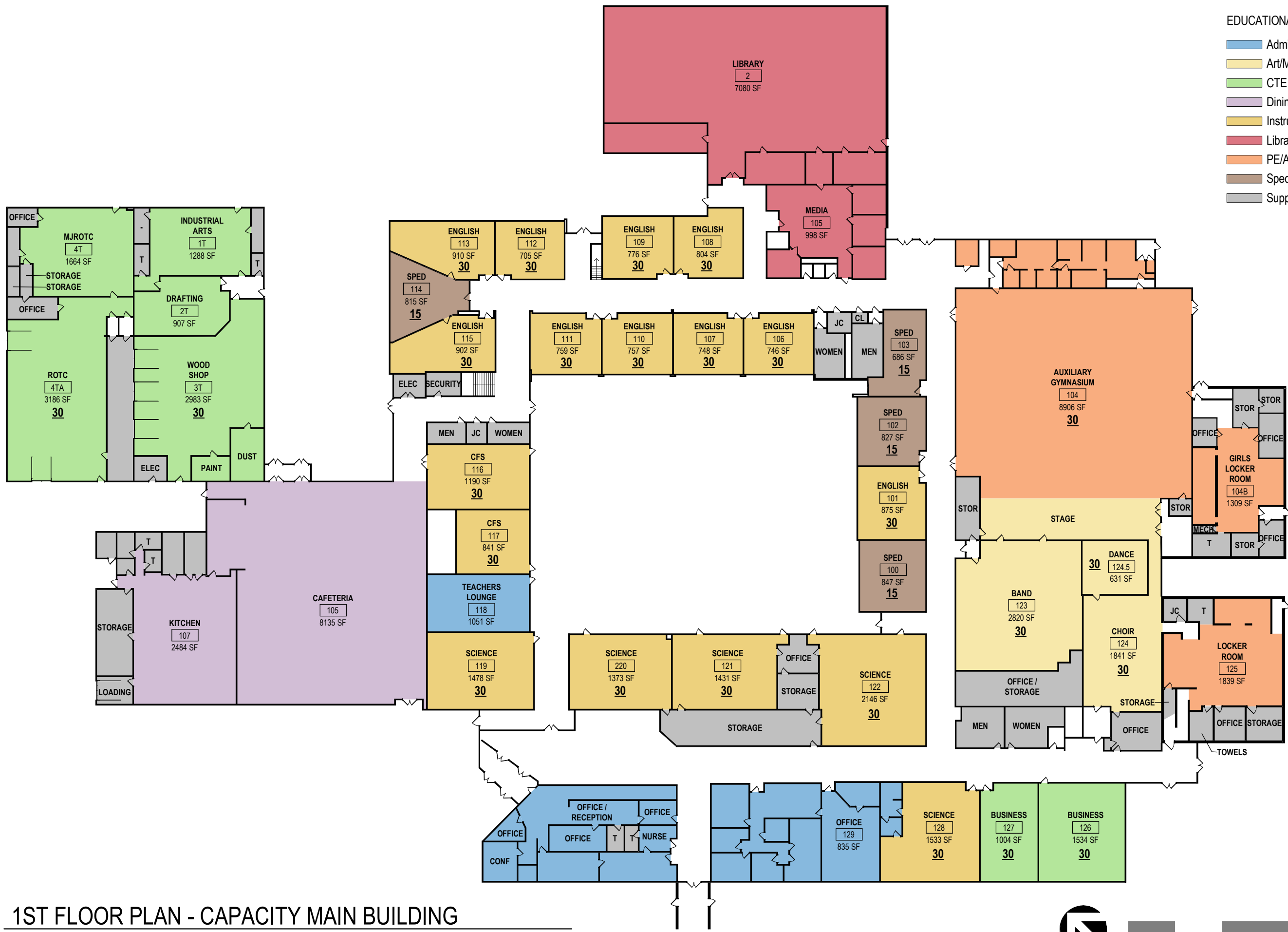
- SITE BOUNDARY
- PERMANENT BUILDING FOOTPRINT
- PARENT PICK-UP / DROP-OFF LOOP
- BUS PICK-UP / DROP-OFF
- STUDENT ENTRY POINTS
- DISTRICT SERVICE DRIVE / ENTRY



MONTROSE HIGH SCHOOL - MAIN BUILDING

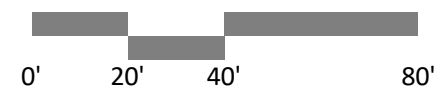
EDUCATIONAL DEPARTMENT LEGEND

- Administration
- Art/Music
- CTE
- Dining/Common
- Instructional Areas
- Library Information Center
- PE/Athletics
- Special Education
- Support

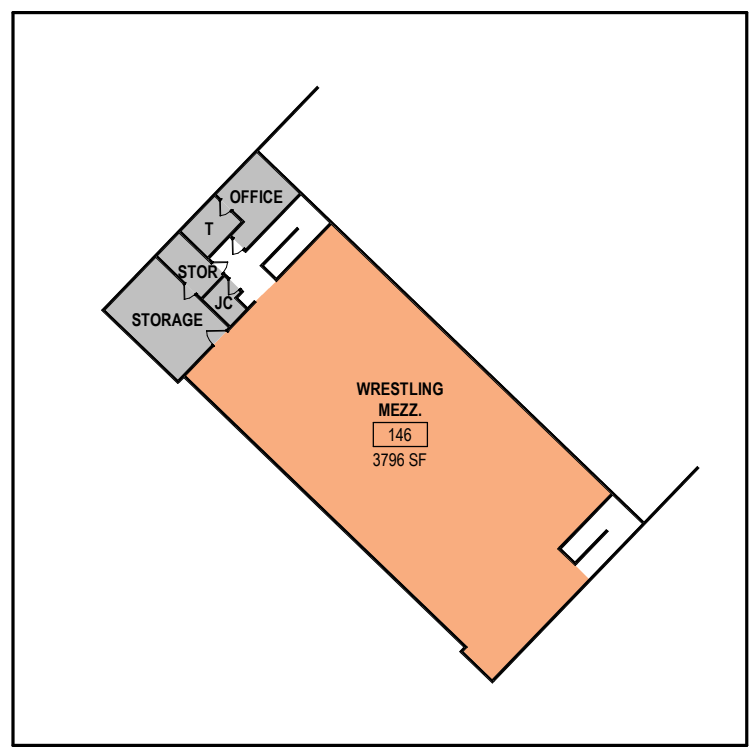


1ST FLOOR PLAN - CAPACITY MAIN BUILDING

1" = 40'-0"



- Instructional Areas
- PE/Athletics
- Support



2ND FLOOR PLAN - CAPACITY WEST

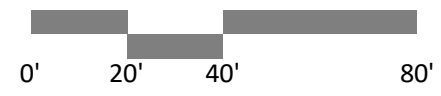
FIRST FLOOR PLAN - CAPACITY WEST

1" = 40'-0"

1" = 40'-0"

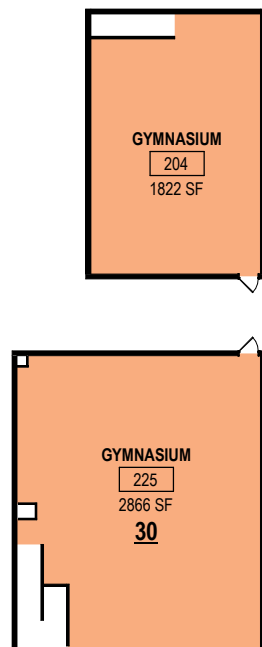


NORTH



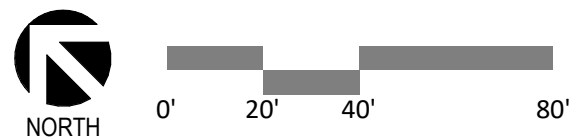
EDUCATIONAL DEPARTMENT LEGEND

PE/Athletics



2ND FLOOR PLAN @ AUX GYM - CAPACITY

1" = 40'-0"

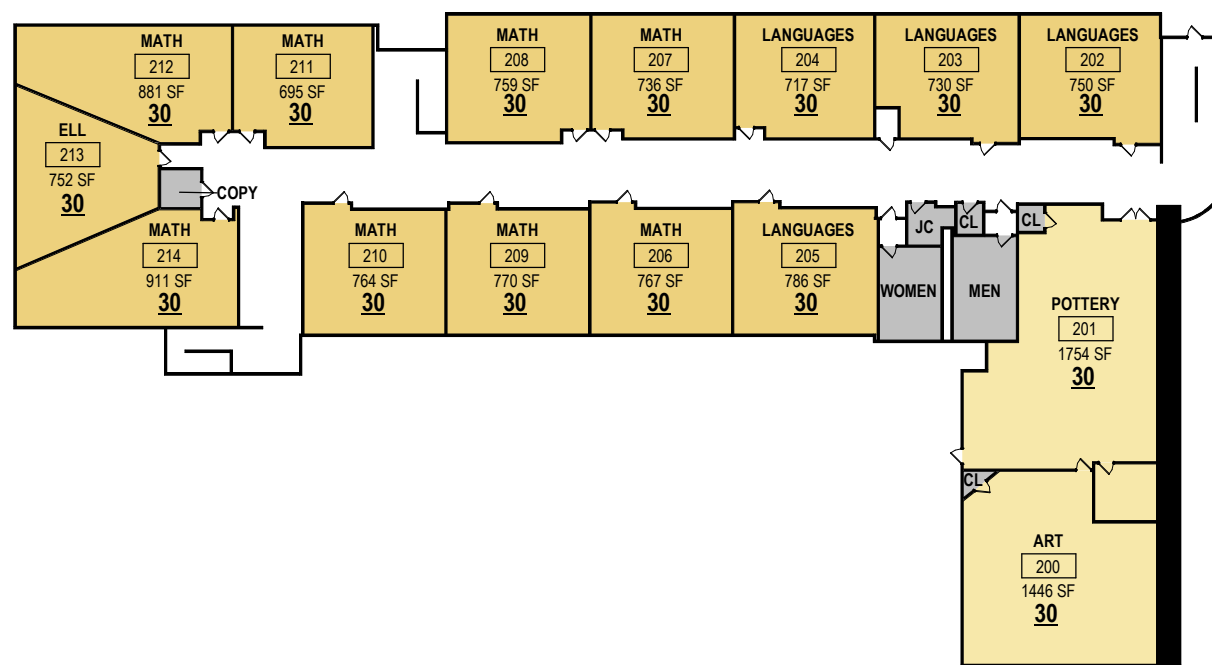


EDUCATIONAL DEPARTMENT LEGEND

Art/Music

Instructional Areas

Support

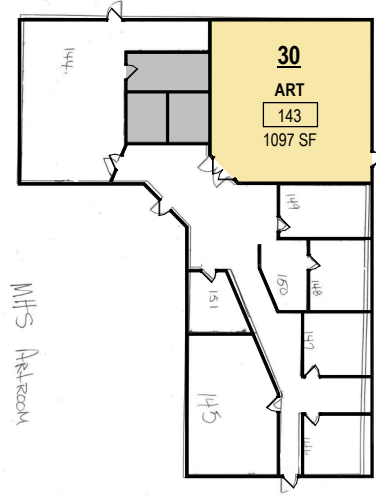


2ND FLOOR PLAN @ CLASSROOMS - CAPACITY

1" = 40'-0"

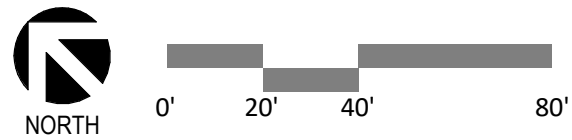
EDUCATIONAL DEPARTMENT LEGEND

- Art/Music
- Support



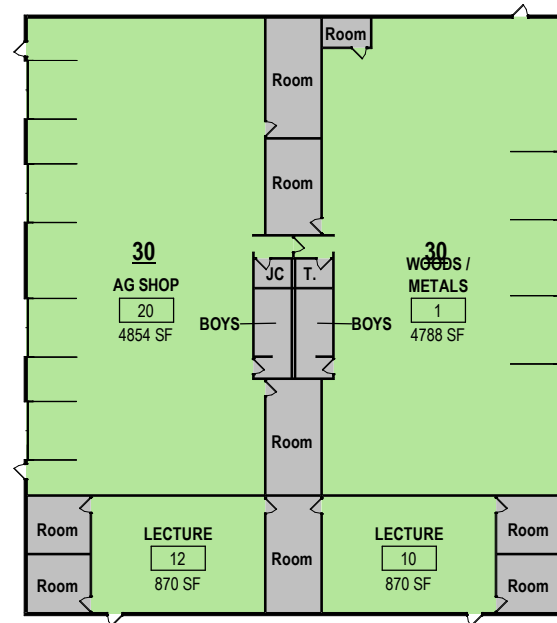
1ST FLOOR PLAN - CAPACITY ART BUILDING

1" = 40'-0"



EDUCATIONAL DEPARTMENT LEGEND

- CTE
- Support



1ST FLOOR PLAN - CAPACITY AG / WOODS

1" = 40'-0"

CLASSROOM CAPACITY

CLASSROOM	NUMBER	AREA	# TEACHING STATIONS	DISTRICT CAPACITY*
-----------	--------	------	---------------------	--------------------

*District estimate used for planning purposes

Art/Music

ART	143	1097 SF	1	30
ART	200	1446 SF	1	30
BAND	123	2820 SF	1	30
CHOIR	124	1841 SF	1	30
DANCE	124.5	631 SF	1	30
POTTERY	201	1754 SF	1	30

CTE

AG SHOP	20	4854 SF	1	30
BUSINESS	126	1534 SF	1	30
BUSINESS	127	1004 SF	1	30
ROTC	4TA	3186 SF	1	30
WOOD SHOP	3T	2983 SF	1	30
WOODS / METALS	1	4788 SF	1	30

Instructional Areas

?	131	782 SF	1	30
CFS	116	1190 SF	1	30
CFS	117	841 SF	1	30
ELL	213	752 SF	1	30
ENGLISH	101	875 SF	1	30
ENGLISH	106	746 SF	1	30
ENGLISH	107	748 SF	1	30
ENGLISH	108	804 SF	1	30
ENGLISH	109	776 SF	1	30
ENGLISH	110	757 SF	1	30
ENGLISH	111	759 SF	1	30
ENGLISH	112	705 SF	1	30
ENGLISH	113	910 SF	1	30
ENGLISH	115	902 SF	1	30
LANGUAGES	202	750 SF	1	30
LANGUAGES	203	730 SF	1	30
LANGUAGES	204	717 SF	1	30
LANGUAGES	205	786 SF	1	30
MATH	206	767 SF	1	30
MATH	207	736 SF	1	30
MATH	208	759 SF	1	30
MATH	209	770 SF	1	30
MATH	210	764 SF	1	30
MATH	211	695 SF	1	30
MATH	212	881 SF	1	30
MATH	214	911 SF	1	30
SCIENCE	119	1478 SF	1	30
SCIENCE	121	1431 SF	1	30
SCIENCE	122	2146 SF	1	30
SCIENCE	128	1533 SF	1	30
SCIENCE	132	976 SF	1	30
SCIENCE	133	788 SF	1	30
SCIENCE	134	1001 SF	1	30
SCIENCE	136	993 SF	1	30
SCIENCE	220	1373 SF	1	30
SS	135	799 SF	1	30
SS	137	799 SF	1	30
SS	138	790 SF	1	30
SS	139	793 SF	1	30
SS	140	788 SF	1	30
SS	141	797 SF	1	30
SS	142	802 SF	1	30

PE/Athletics

AUXILIARY GYMNASIUM	104	8906 SF	1	30
GYMNASIUM	152	14483 SF	1	30
GYMNASIUM	225	2866 SF	1	30

Special Education

SPED	100	847 SF	1	15
SPED	102	827 SF	1	15
SPED	103	686 SF	1	15
SPED	114	815 SF	1	15

GRAND TOTAL: 61 95472 SF 61 1770

75% Utilization 1328 students

ANTICIPATED ENROLLMENT:

2021 1409 students
2025 1513 students

