



## School Facilities Digital Open House *Proposed Improvement Projects*

# Gunnison High School & Pathways Building

---

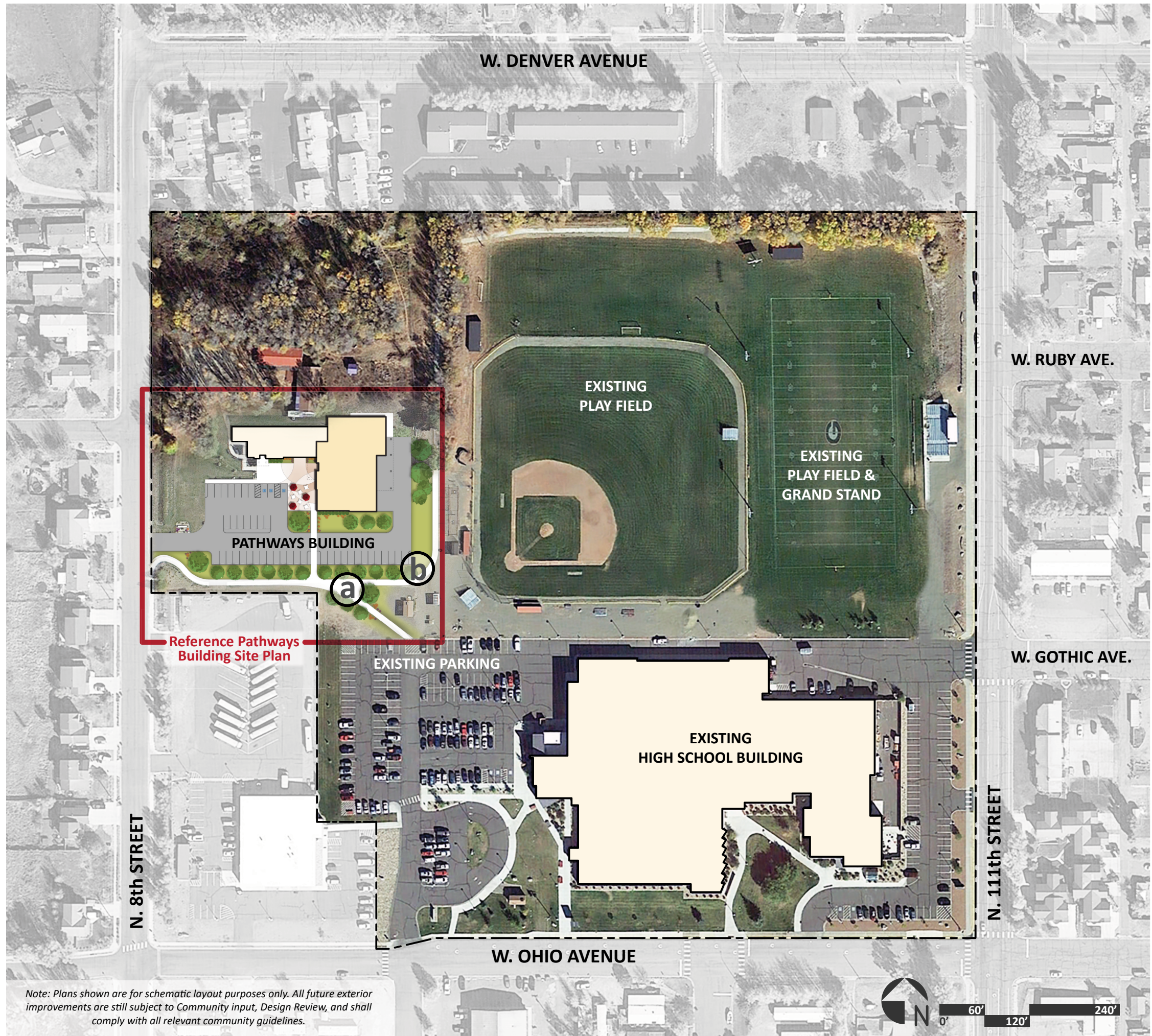
**Overview of Needs:** With significant upgrades completed in 2010, the high school facility generally meets the needs of students and the community. Enrollment growth projections are expected to be supported by existing facilities into the near future. However, health and security standards, as well as growth in programmatic needs around STEAM (Science, Technology, Engineering, Art, and Math) and vocational education would be addressed.

**Safety:** Improvements have been recommended at the main building entry to improve visibility with minor modifications to the existing entry vestibule to allow for better screening of visitors before they can gain access to the building.

**Overcrowding/Programming Expansion:** Through a continued effort to serve the community with relevant programs, the Pathways Center needs to expand. The proposed expansion would include a Culinary Arts program complete with space to host events and cater groups all through the school program. A new Healthcare Lab provides space for career education centered around the growing healthcare industry. And finally, an expanded facility provides a permanent home for the Outdoor Recreation program including classroom, storage and staging space that is both secure and accessible. These programs would expand existing district vocational programming in the construction sciences, cosmetology, and architecture.

**Maintenance:** School energy improvements such as improving the GHS kitchen building envelope, adding occupancy sensors to conserve electricity, replacing portions of flooring, and other necessary maintenance items are included in the project.

*Explore the plans below to see what relevant, exciting and important improvements  
are proposed for Gunnison High School!*



W. DENVER AVENUE

W. RUBY AVE.

W. GOTHIC AVE.

W. OHIO AVENUE

N. 8th STREET

N. 111th STREET

**KEY PLAN LEGEND**

- (a)** Improve trail connection between High School and Pathways Building
- (b)** Re-route trail connection around expanded Pathways Parking

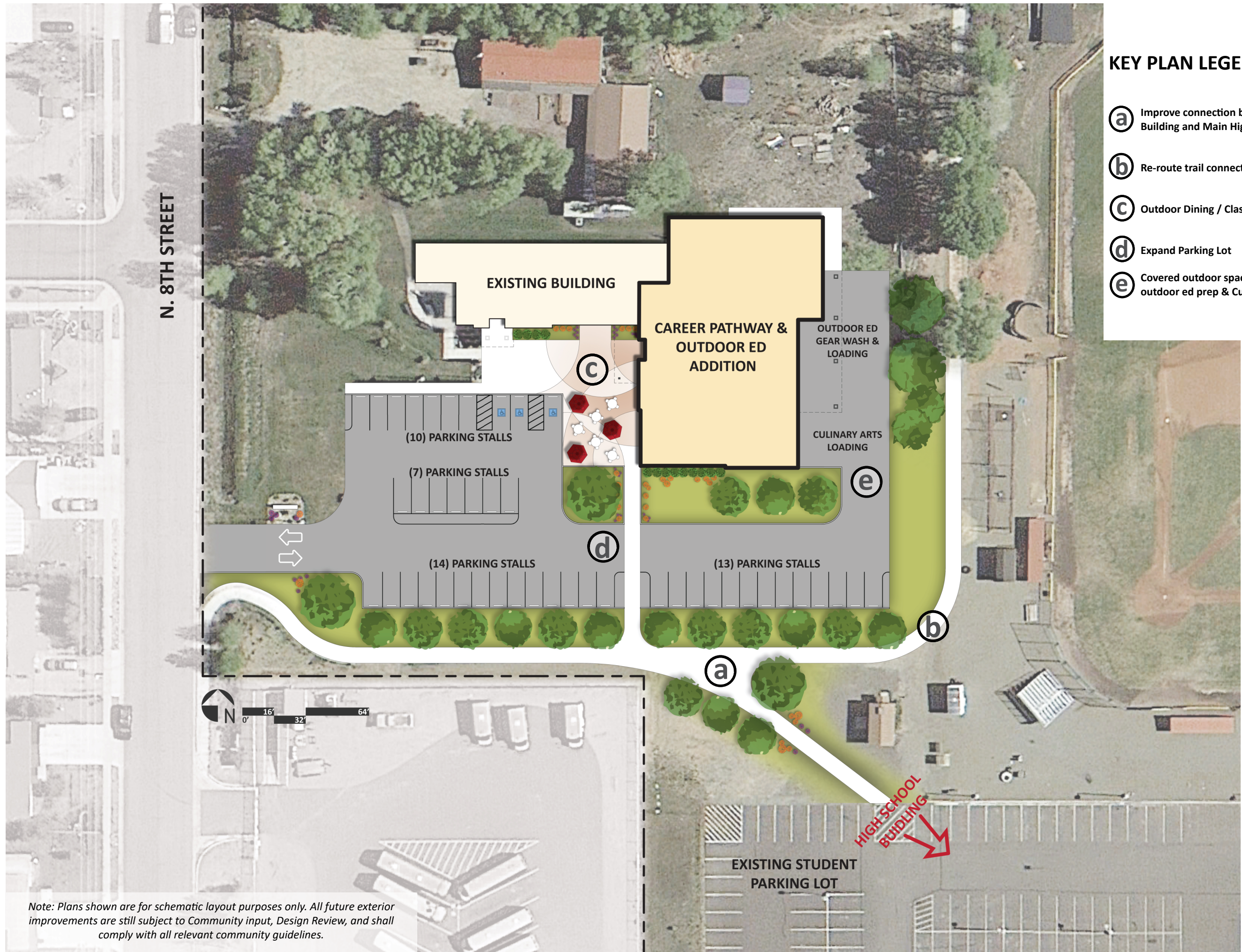
Reference Pathways Building Site Plan

Note: Plans shown are for schematic layout purposes only. All future exterior improvements are still subject to Community input, Design Review, and shall comply with all relevant community guidelines.



**GUNNISON HIGH SCHOOL**  
Proposed Site Improvements





**KEY PLAN LEGEND**

- (a) Improve connection between Pathways Building and Main High School Building
- (b) Re-route trail connection
- (c) Outdoor Dining / Classroom Space
- (d) Expand Parking Lot
- (e) Covered outdoor space for gear washing/ outdoor ed prep & Culinary Arts loading

N. 8TH STREET

EXISTING BUILDING

CAREER PATHWAY & OUTDOOR ED ADDITION

OUTDOOR ED GEAR WASH & LOADING

CULINARY ARTS LOADING

(10) PARKING STALLS

(7) PARKING STALLS

(14) PARKING STALLS

(13) PARKING STALLS



HIGH SCHOOL BUILDING

EXISTING STUDENT PARKING LOT

Note: Plans shown are for schematic layout purposes only. All future exterior improvements are still subject to Community input, Design Review, and shall comply with all relevant community guidelines.

**GUNNISON HIGH SCHOOL**  
Proposed Site Improvements - Pathways Building





### GRAPHIC LEGEND

- ADMINISTRATION & STUDENT SERVICES
- HAND WASH STATION
- GENDER INCLUSIVE RR
- SUPPORT SPACE
- NOT IN SCOPE
- NEW WALL
- EXISTING WALL

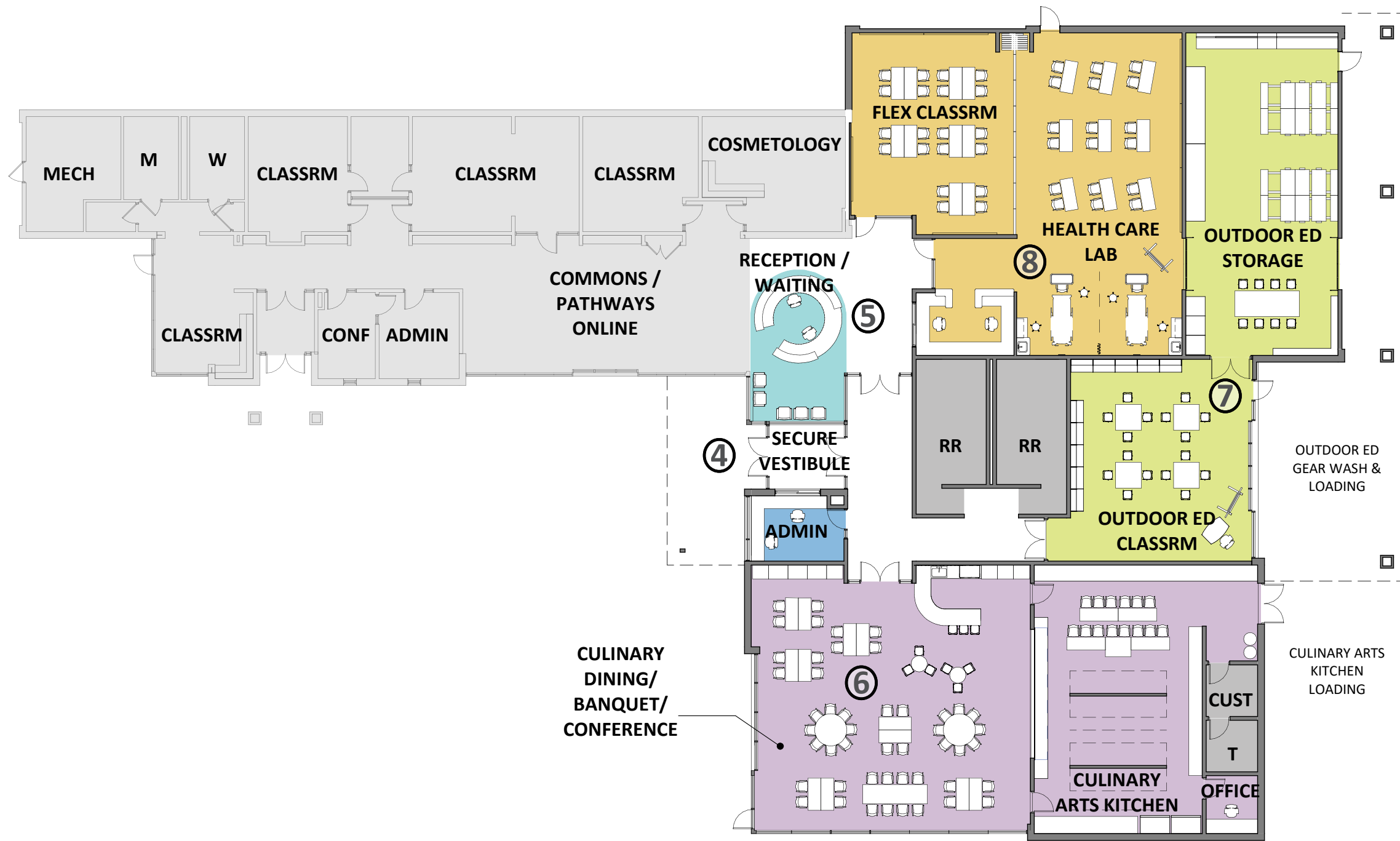
### KEY PLAN LEGEND

- 1 Secure Vestibule Upgrades
- 2 Add Handwash Stations
- 3 Add Restrooms

*Note: Plans shown are for schematic layout purposes only. All future exterior improvements are still subject to Community input, Design Review, and shall comply with all relevant community guidelines.*

PROPOSED PLAN - LEVEL 1





**GRAPHIC LEGEND**

- ADMINISTRATION & STUDENT SERVICES
- STUDENT COMMONS & DINING
- ACADEMIC CORE
- BREAK-OUT INSTRUCTION
- CAREER & TECHNICAL EDUCATION
- SUPPORT SPACE
- NOT IN SCOPE
- NEW WALL
- EXISTING WALL

**KEY PLAN LEGEND**

- ④ Secure Vestibule Upgrades
- ⑤ Welcome Desk & Student Hub
- ⑥ Culinary/ Dining/ Banquet /Conference Space for School and Community Use
- ⑦ Outdoor Education Classroom & Storage
- ⑧ Health Services Lab & Flex Classroom

*Note: Plans shown are for schematic layout purposes only. All future exterior improvements are still subject to Community input, Design Review, and shall comply with all relevant community guidelines.*

**PROPOSED PLAN - LEVEL 1**

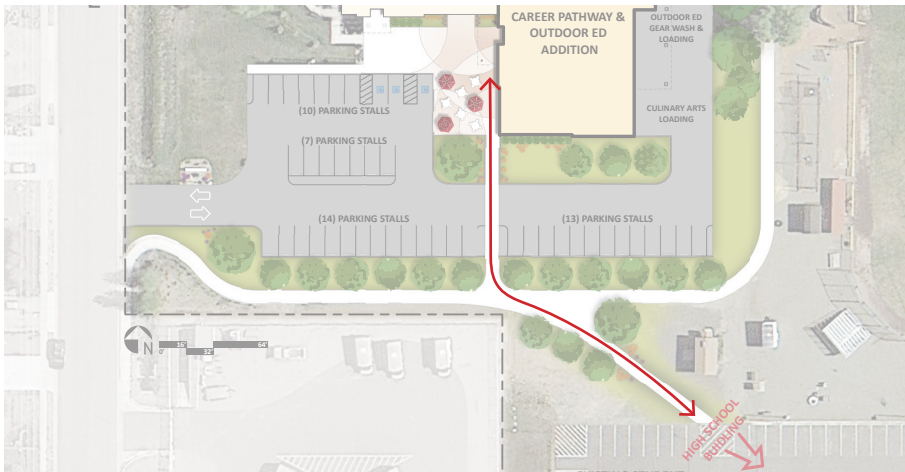
**GUNNISON HIGH SCHOOL - PLAN A**  
Proposed Building Improvements - Pathways Building



# Gunnison High School & Pathways Building

## Proposed Site Improvements

Reference Proposed Site Plan for additional information.



### **a** CONNECTION BETWEEN PATHWAYS BUILDING AND HIGH SCHOOL BUILDING

As the Pathways program grows, the connection between the high school and Pathways Building will be improved to provide a clear, safe and maintainable surface for students to utilize. ADA access and improved landscape are part of the scope to connect these functions.



### **b** TRAIL CONNECTION

To align with the values of the community, the school property will have strengthened and improved connection to the trail that traverses the campus.



# Gunnison High School & Pathways Building



## **c** OUTDOOR DINING / CLASSROOM

Extending the new Culinary Dining space, a new outdoor dining will be added to provide another option for student and community use. As a flexible and inviting outdoor plaza, this space also serves as an outdoor classroom for students and teachers to extend the learning environment.



## **d** PARKING LOT

To accommodate the growing program and support community use, the parking lot will be expanded to meet the growing needs of the district.



## **e** LOADING ZONE

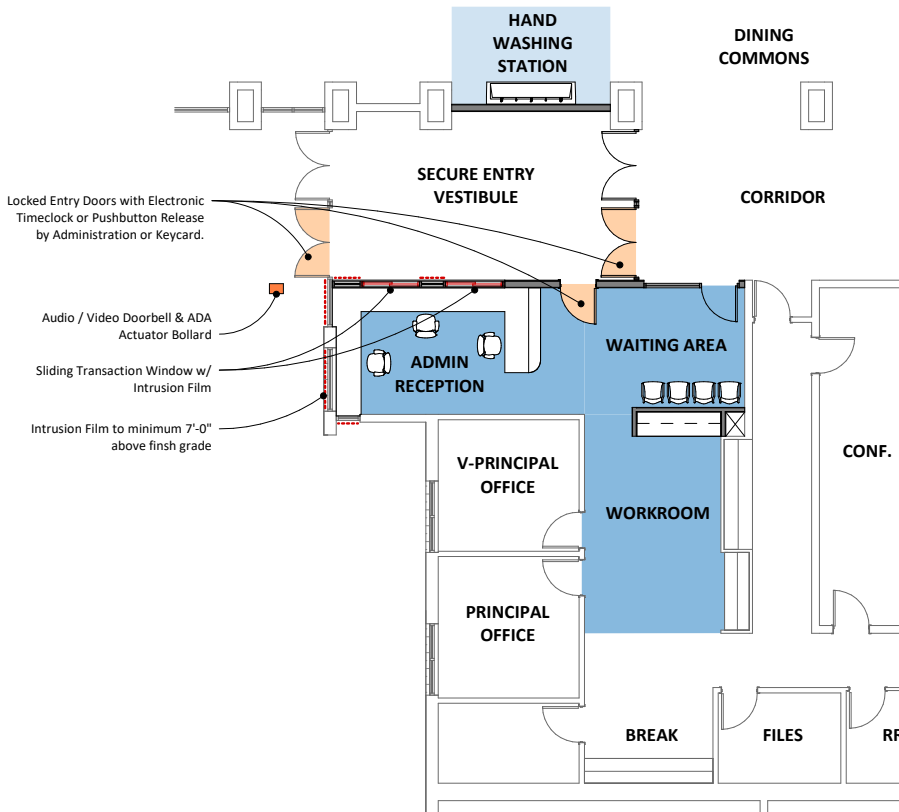
A dedicated outdoor space will provide an improved loading area, staging space and a gear wash for the outdoor education program.



# Gunnison High School & Pathways Building

## Proposed Building Improvements

Reference Proposed Building Plan for additional information.



### 1 SECURE ENTRY VESTIBULE

The entry will be modified to accommodate district standards for safety and security. Intrusion resistant film will be applied to the glass surrounding the reception to resist forced entry. An audio / video doorbell will be installed at the entry to control who is able to enter the school from the exterior. A new electronic door locking system will allow staff to check visitor credentials before allowing the visitors to gain access to the building. Visual control of the building administration will be improved.



example image - Lake City Elementary

### 2 HAND WASH STATIONS

To encourage good sanitation practices and improved student health, new hand washing stations will be installed throughout the school.



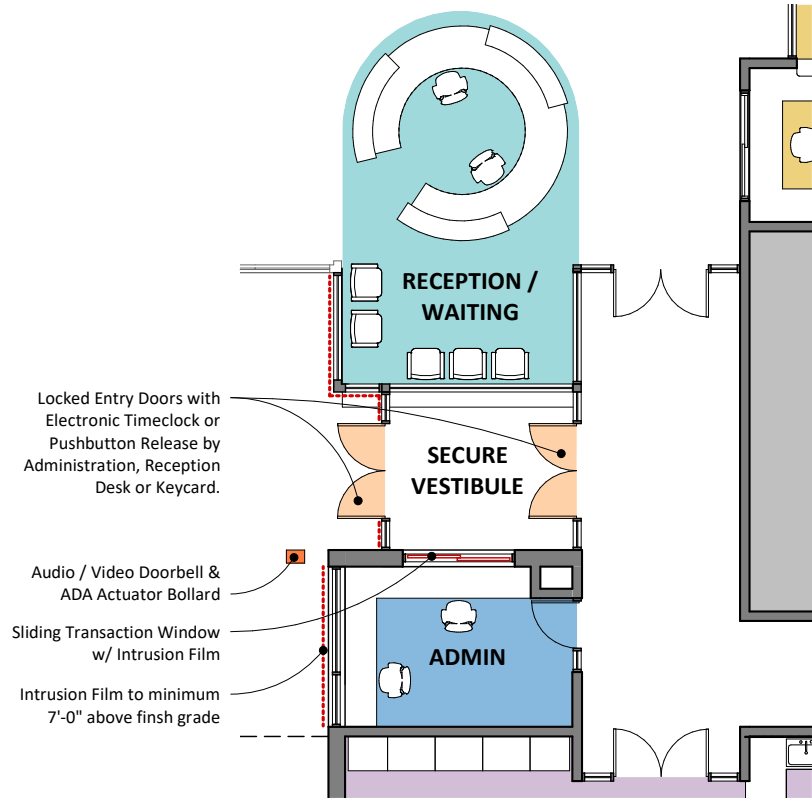
### 3 SINGLE STALL RESTROOM

Single stall restrooms will be installed to provide more restroom access during school days. These restrooms also provide a family restroom option during school events and functions.



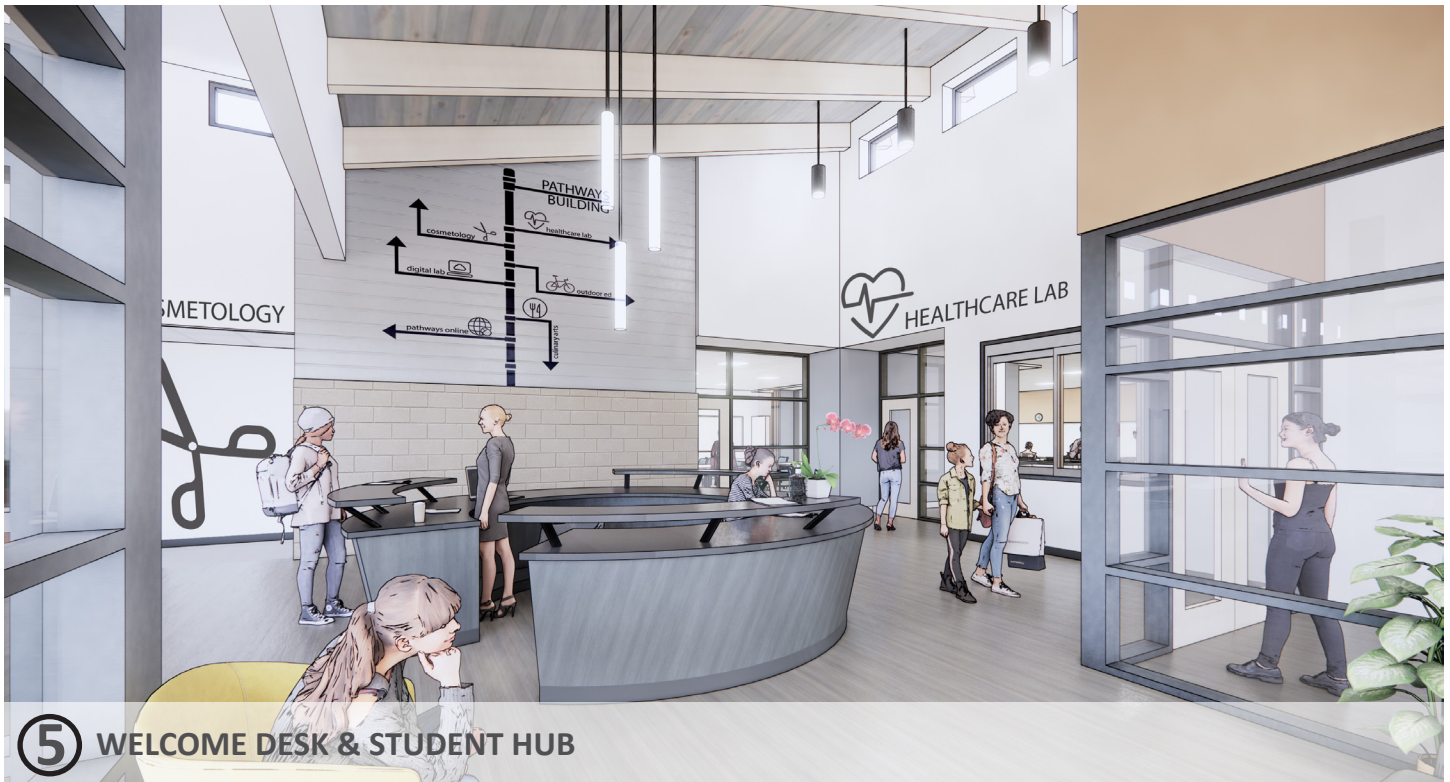


# Gunnison High School & Pathways Building



## ④ SECURE ENTRY VESTIBULE

The entry will be modified to accommodate district standards for safety and security. Intrusion resistant film will be applied to the glass surrounding the reception to resist forced entry. An audio / video doorbell will be installed at the entry to control who is able to enter the school from the exterior. A new electronic door locking system will allow staff to check visitor credentials before allowing the visitors to gain access to the building. Visual control of the building administration will be improved through the addition of an entry control and information desk.



## ⑤ WELCOME DESK & STUDENT HUB

The new welcome desk will be an integral part of the central space providing information, guidance and a learning opportunity for hospitality students.

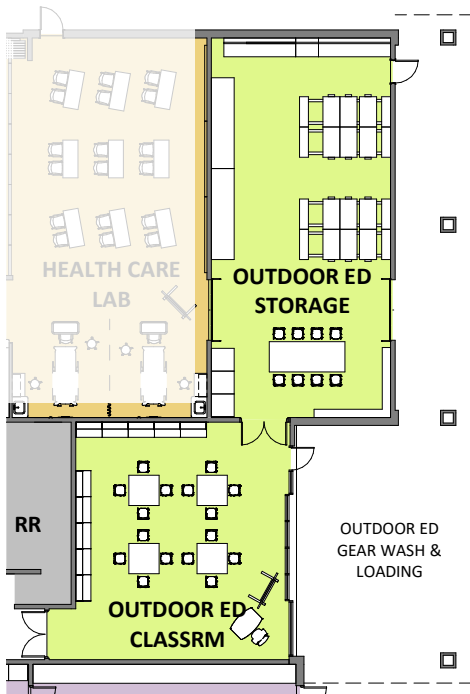


# Gunnison High School & Pathways Building



## 6 CULINARY DINING / BANQUET / CONFERENCE SPACE

A dynamic and multi-purpose space can provide many functions to the school and to the district. This can be used for the students to learn how to run a restaurant. Impromptu or planned collaboration can happen throughout the day. After hours the space can generate revenue by renting it out for meetings or other community events. With a few modifications to the furniture layout, this space can be a convenient and spacious location for a board meeting. A coffee/concessions bar provides an opportunity for student run programs as well as an amenity for students and staff.



## 7 OUTDOOR EDUCATION CLASSROOM & STORAGE

A new facility will be provided for the outdoor education program. A flexible layout will provide opportunities for hands on learning with a great connection to outside. The flexible classroom is immediately adjacent to the Outdoor Education equipment storage to support educational needs and provide a gear staging space.

Immediately adjacent to the classroom will be the outdoor education storage room. This space will take advantage of high open ceilings to optimize storage for all of the equipment that the program provides. There are plans to furnish the space with high density storage units to create an efficient storage environment. Additionally, a work bench will be available to maintain the equipment and provide another learning opportunity for the students.



# Gunnison High School & Pathways Building



## 8 HEALTH SERVICES LAB & FLEX CLASSROOM

The Health Services Lab will provide the students with two health care simulation stations, a pharmacy and a lecture space that can accommodate 16 students. Adjacent to the Health Services Lab will be a flexible classroom with an operable wall separating the spaces. This will allow the space to almost double in size to accommodate larger groups or allow users to comfortably spread out within the space.

