



## School Facilities Digital Open House *Proposed Improvement Projects*

# Gunnison Community School

---

**Overview of Needs:** Originally built in 1996 and with upgrades completed in 2010, the Gunnison Community School continues to meet many of the first grade through eighth grade school needs. Enrollment at GCS indicates growth that the school can accommodate within existing classroom facilities into the near future, though adequate capacity to accommodate school lunches continues to be a need. Changes in school health and security standards and increased space needs to support current educational practices have led to recommendations for improvements.

**Safety:** At GCS, the proposed solution for increased security includes moving the Administration to the exterior corner of the building to improve visibility to outside spaces and control of a single-entry point to the building with an entry sequence that meets industry standards for school safety.

**Maintenance:** The library space will be renovated to meet the ever-changing needs for collaboration space within schools. Included within the Library area is a new shared maker space to provide a resource for project-based learning and flexible furniture throughout.

**Maintenance:** The Achievement Center (severe needs special education program) is in need of access to daylight and views for students who spend the majority of their day inside an interior classroom. Counseling, nursing, and other special service offices will be renovated into a cohesive student services area.

**Overcrowding:** To address the need for more cafeteria capacity, this area will be expanded in size by moving the administration and will include provisions to utilize the student gallery through the use of glass overhead doors. Serving lines will be expanded to allow adequate lunch service.

**Maintenance:** Exterior improvements include engineering, draining, and improved turf to two multi-sport athletic fields behind GCS to meet the needs of GCS and district-wide athletic programs. The existing playground equipment and surfaces will be replaced to improve the quality of outdoor play and improve drainage issues.

**Maintenance:** Addressing heating efficiency is a key priority. Energy audits found this facility to be using significantly more energy than other buildings in the district. Improvements include the addition of continuous exterior insulation, replacement of original windows, and conversion of the mechanical system to a highly energy efficient system.

*Explore the plans below to see what relevant, exciting and important improvements are proposed for  
Gunnison Community School!*



## KEY PLAN LEGEND

- (a)** Expand existing play fields to two fields
- (b)** Increase bike parking
- (c)** Upgrade playground and resurface

Note: Plans shown are for schematic layout purposes only. All future exterior improvements are still subject to Community input, Design Review, and shall comply with all relevant community guidelines.

**GUNNISON COMMUNITY SCHOOL**

*Proposed Site Improvements*

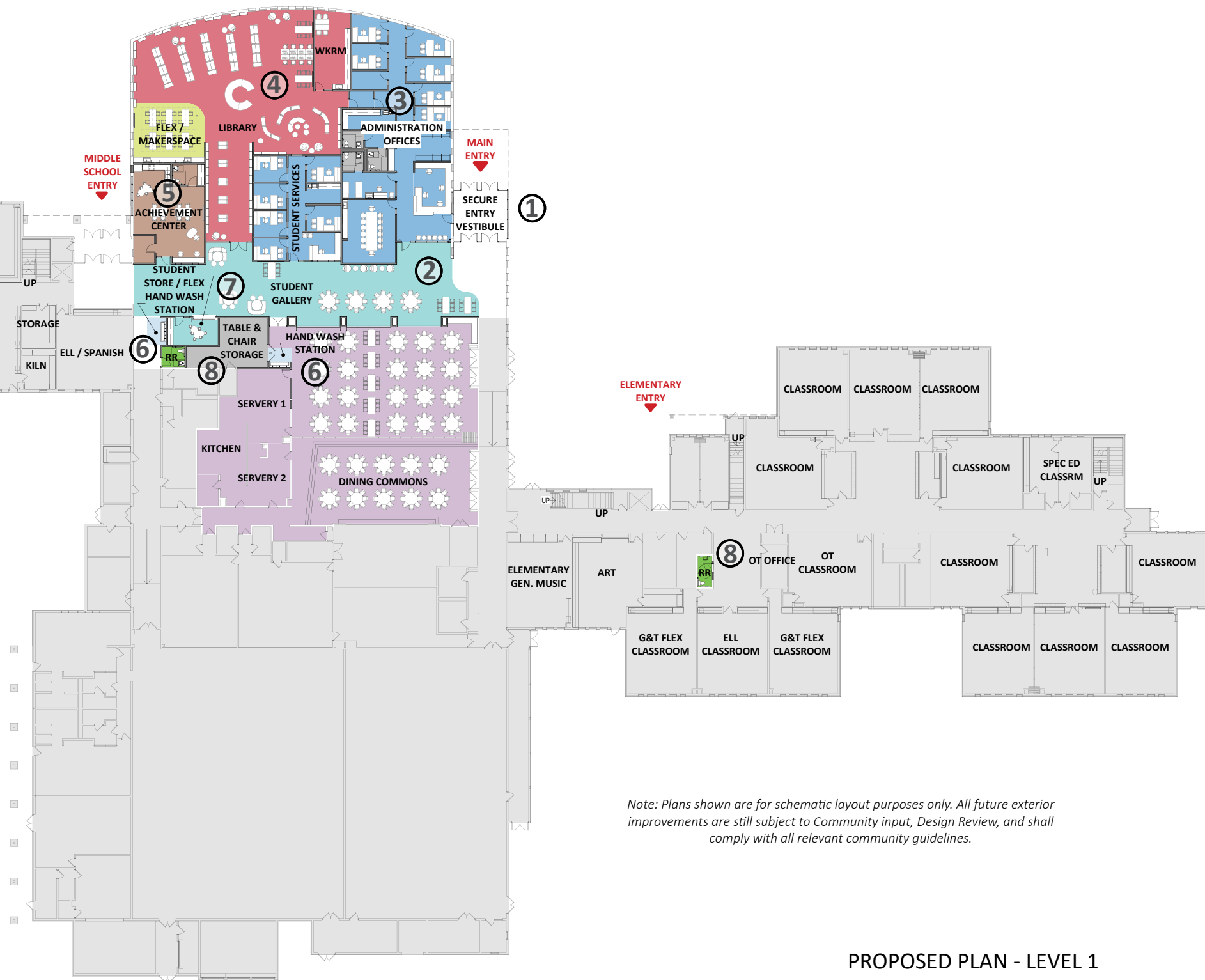


## GRAPHIC LEGEND

- ADMINISTRATION & STUDENT SERVICES
- SPECIAL EDUCATION
- STUDENT COMMONS & DINING
- LIBRARY & TECHNOLOGY
- PE & ATHLETICS
- ACADEMIC CORE
- BREAK-OUT INSTRUCTION
- FINE ARTS
- CAREER & TECHNICAL EDUCATION
- HAND WASH STATION
- GENDER INCLUSIVE RR
- SUPPORT SPACE
- NOT IN SCOPE
- NEW WALL
- EXISTING WALL

## KEY PLAN LEGEND

- 1 Secure Vestibule Upgrades
- 2 Expand Servery, Cafeteria Seating / Student Break-out Space
- 3 Reconfigure Admin & Counseling
- 4 Reconfigure Library and create Maker Space
- 5 Reconfigure and Improve Achievement Center
- 6 Add Handwash Stations
- 7 Reconfigure Student Gallery
- 8 Add Restrooms
- 9 CTE Improvements



*Note: Plans shown are for schematic layout purposes only. All future exterior improvements are still subject to Community input, Design Review, and shall comply with all relevant community guidelines.*

PROPOSED PLAN - LEVEL 1

GUNNISON COMMUNITY SCHOOL

Proposed Building Improvements

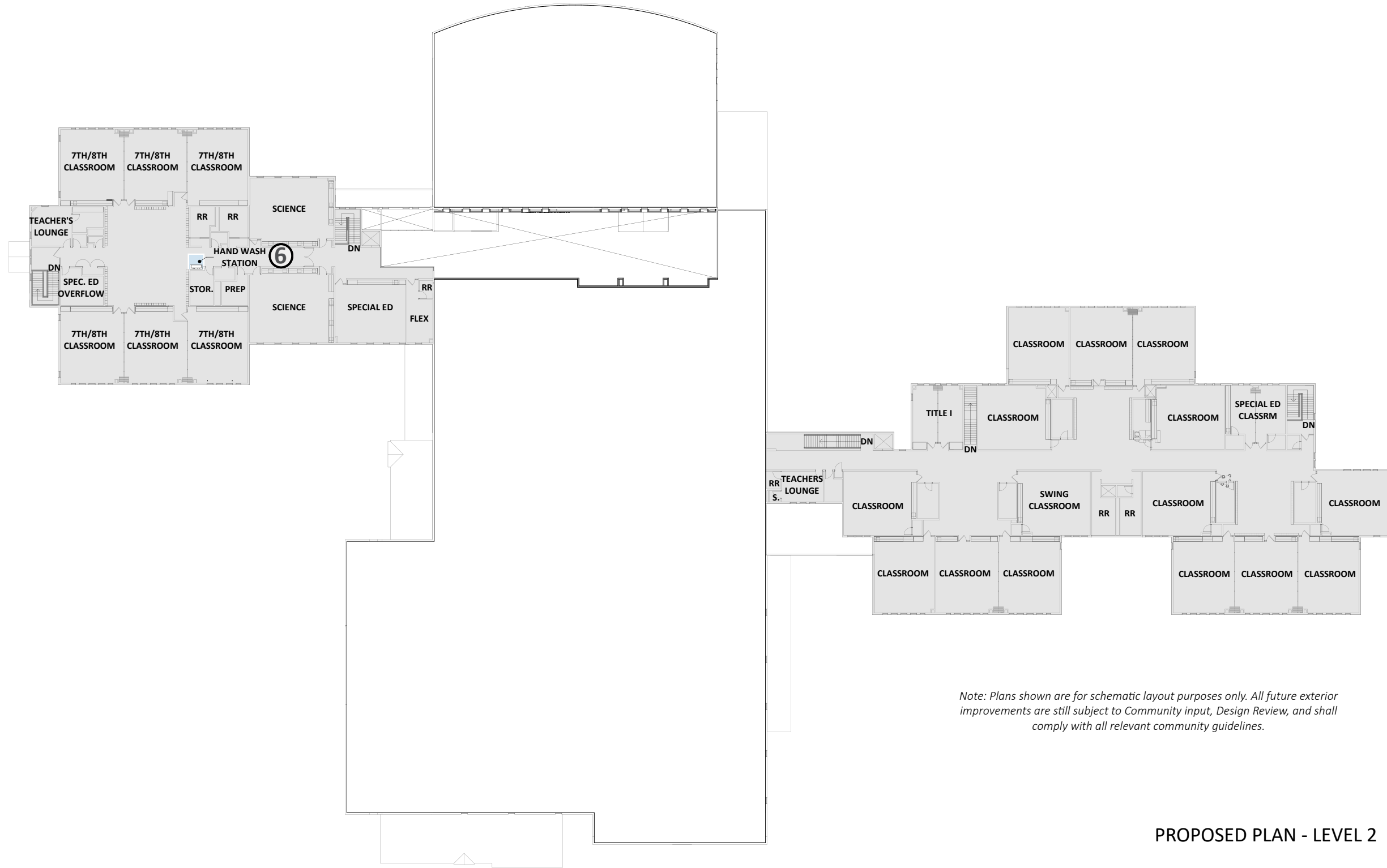


## GRAPHIC LEGEND

- ADMINISTRATION & STUDENT SERVICES
- SPECIAL EDUCATION
- STUDENT COMMONS & DINING
- LIBRARY & TECHNOLOGY
- PE & ATHLETICS
- ACADEMIC CORE
- BREAK-OUT INSTRUCTION
- FINE ARTS
- CAREER & TECHNICAL EDUCATION
- HAND WASH STATION
- GENDER INCLUSIVE RR
- SUPPORT SPACE
- NOT IN SCOPE
- NEW WALL
- EXISTING WALL

## KEY PLAN LEGEND

- 1 Secure Vestibule Upgrades
- 2 Expand Cafeteria Seating / Student Break-out Space
- 3 Reconfigure Admin & Counseling
- 4 Reconfigure Library and create Maker Space
- 5 Reconfigure and Improve Achievement Center
- 6 Add Handwash Stations
- 7 Expand Kitchen & Servery
- 8 Add Gender Inclusive Restrooms
- 9 CTE Improvements



*Note: Plans shown are for schematic layout purposes only. All future exterior improvements are still subject to Community input, Design Review, and shall comply with all relevant community guidelines.*

PROPOSED PLAN - LEVEL 2

**GUNNISON COMMUNITY SCHOOL**

*Proposed Building Improvements*



# Gunnison Community School

## Proposed Site Improvements

Reference Proposed Building Plan for additional information.



### **a** PLAY FIELDS

Expand the fields to address the need for a district soccer field and meet the growing needs of the Gunnison Community School. Two regulation combination soccer/football fields will be provided with access to relocated field events (long jump, discus and shot put). The north field will provide a great place for down valley soccer games to be scheduled.



### **b** BIKE PARKING

Bike parking on the property will be increased to accommodate and promote the increased use by bicycling commuters.



# Gunnison Community School



*example image - Nederland Elementary School*

## **C** OUTDOOR PLAY AREA

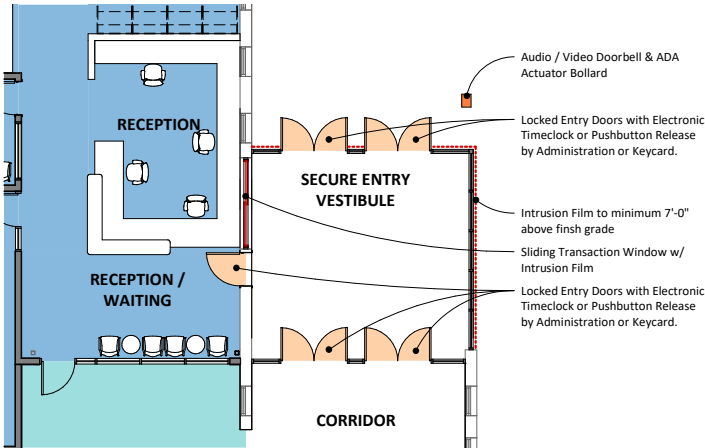
The outdoor play area will be improved, structures will be replaced or updated as required, new fall surface will be installed and site drainage will be improved.



# Gunnison Community School

## Proposed Building Improvements

Reference Proposed Building Plan for additional information.



### 1 SECURE ENTRY VESTIBULE

The entry will be modified to accommodate district standards for safety and security. Intrusion resistant film will be applied to the glass surrounding the reception to resist forced entry. An audio / video doorbell will be installed at the entry to control who is able to enter the school from the exterior. A new electronic door locking system will allow staff to check visitor credentials before allowing the visitors to gain access to the building. Visual control of the building administration will be improved.

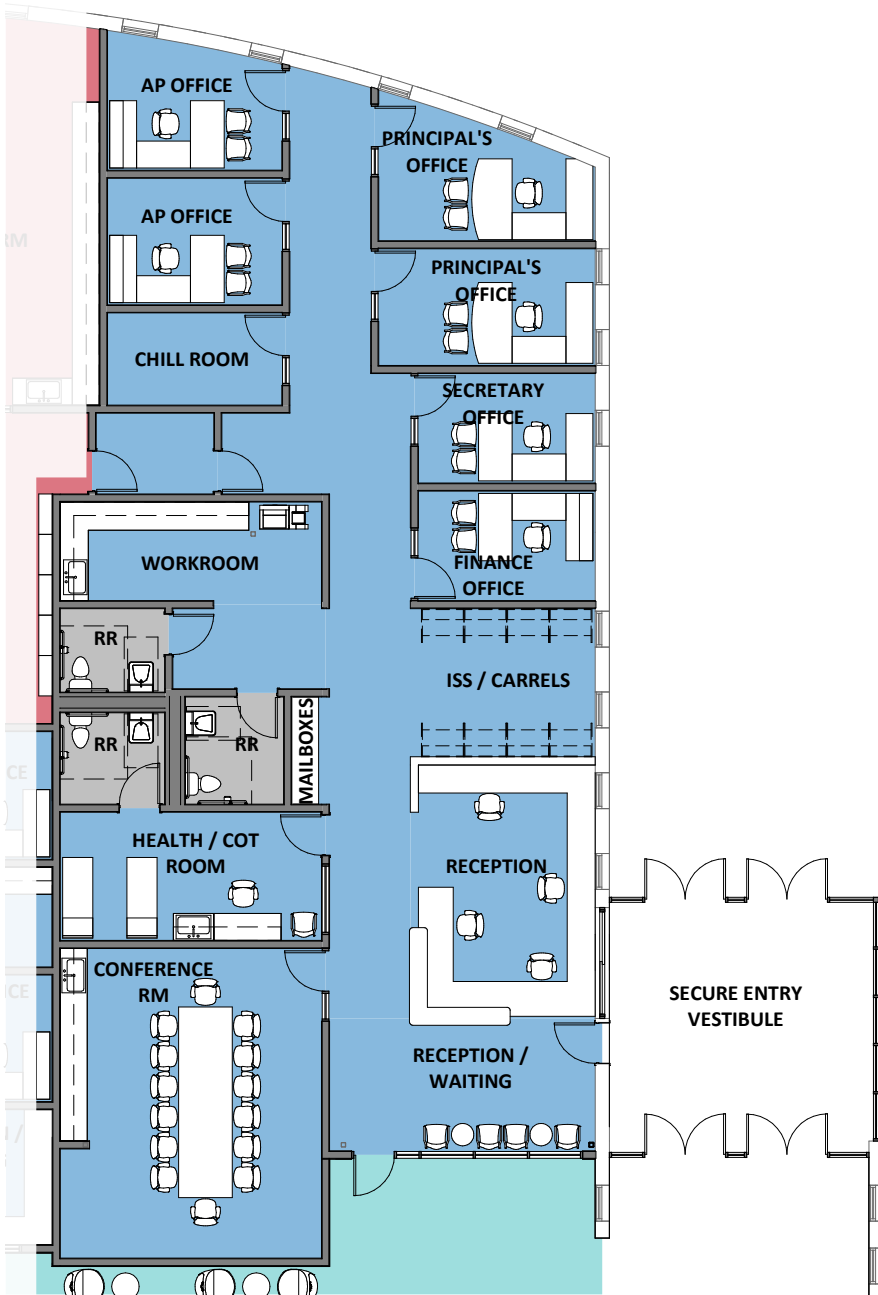


### 2 EXPAND SERVERY AND DINING AREA

The kitchen servery will be expanded to improve student circulation. Large doors will be added to provide additional seating at lunch time within the Student Gallery and increase capacity. Additional hand washing stations will be included within the cafeteria to promote student health.



# Gunnison Community School



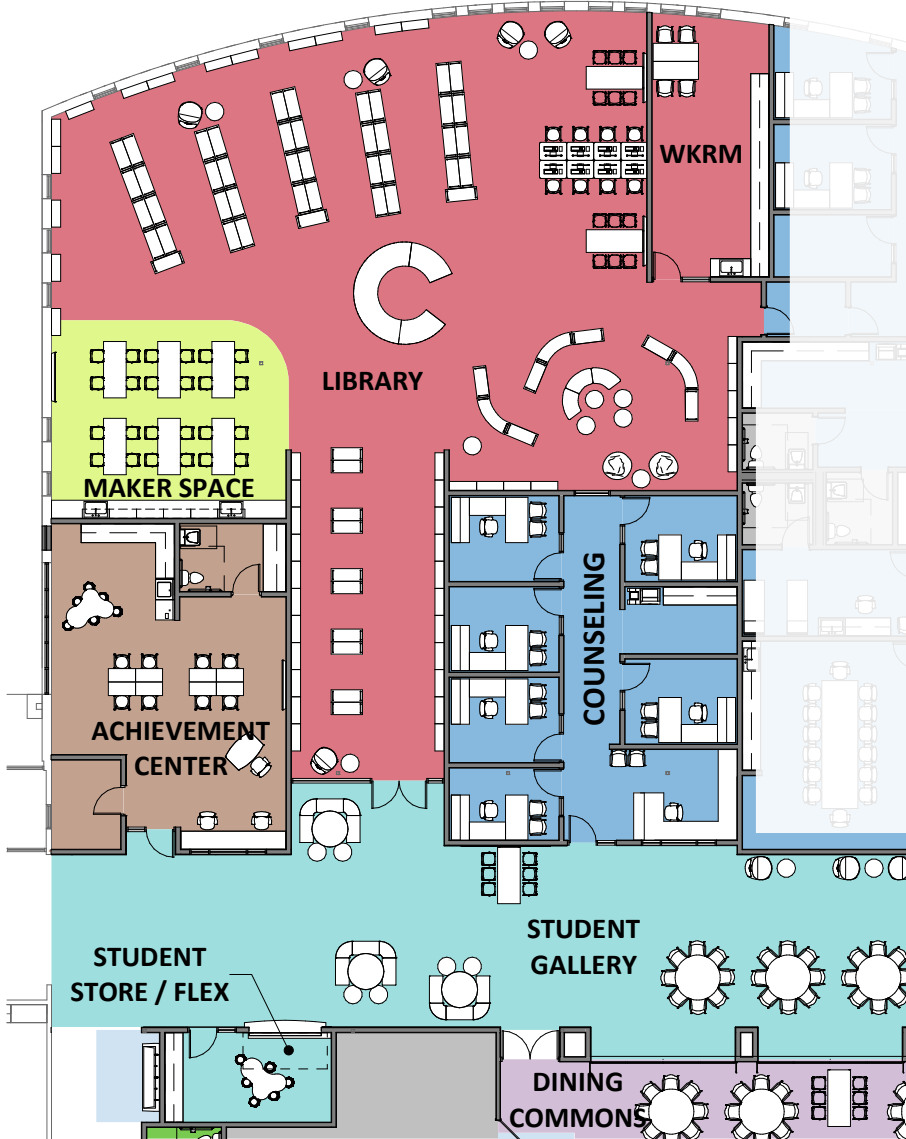
## 3 ADMINISTRATION

Administration offices will be relocated to the southwest corner of the existing building. The move will allow for the offices to receive windows or views to the main visitor entrance improving access control. The daylight will create a more comfortable environment for staff to work in; and increase passive and direct supervision and control to the entrance. Counseling and student services will be relocated adjacent to administration and remain centrally located to the student population and engage with the new student gallery.





# Gunnison Community School



## ④ LIBRARY & MAKER SPACE

The library will now include mobile, flexible casework, new technology and a collaboration spaces; creating a learning environment aligned to current education needs. A new shared Maker Space will be provided to support project-based learning opportunities for all students.



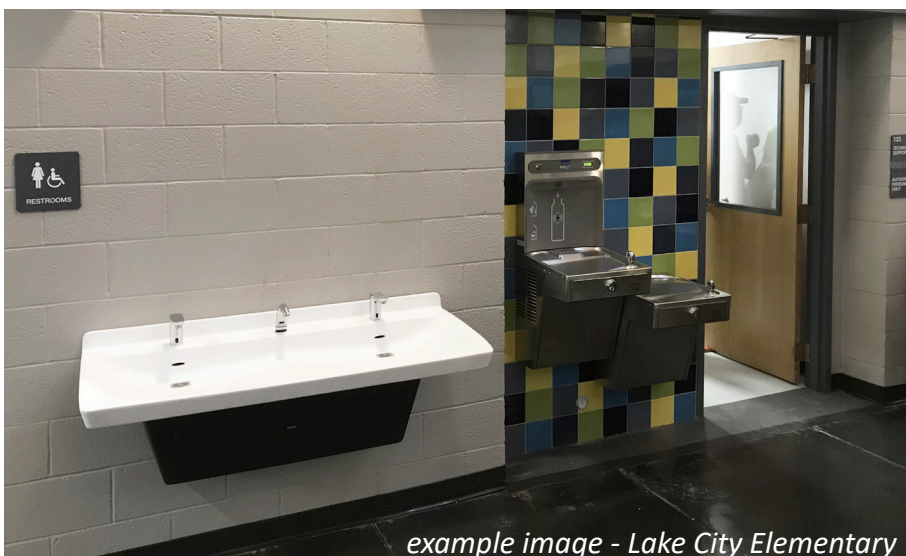
## ⑤ ACHIEVEMENT CENTER

Special Education and Counseling will be relocated within the building and be adjacent to one another to create a new Achievement Center. The relocation will provide daylight and views to these areas, and be centrally located in the building to provide equal access for all students.



## ⑥ HAND WASH STATION

To encourage good sanitation practices and improved student health, new hand washing stations will be installed throughout the school.



example image - Lake City Elementary

# Gunnison Community School



## 7 STUDENT GALLERY

Administration offices will be relocated to open up the vaulted corridor ceiling, creating a daylit space for the cafeteria to expand into. The Library, Achievement Center and Student Resources areas will also be relocated and connect to the new Student Gallery. The space will be a dynamic, inviting and energizing hub for the school.



Scan the QR code with your smartphone camera for an interactive experience!

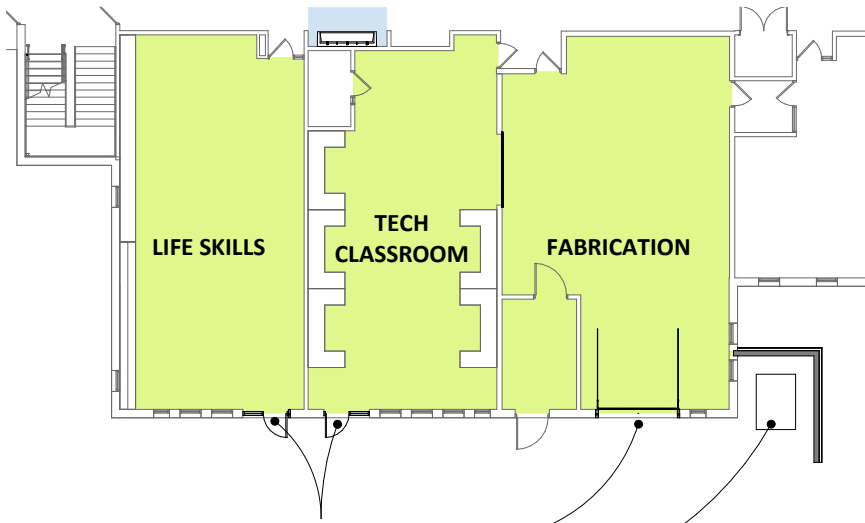


## 8 SINGLE STALL RESTROOM

Single stall restrooms will be installed to provide more restroom access during school days. These restrooms also provide a family restroom option during school events and functions.



# Gunnison Community School



## 9 MIDDLE SCHOOL CTE SUITE

An overhead coiling door will be added between the Tech Classroom and the Fabrication shop to support design and fabrication classes working in both areas simultaneously. A garage door to the exterior will provide outdoor access for large project exploration. The dust collection unit will be relocated to prevent damage from falling ice and minimize noise into classroom areas.

OUTDOOR ACCESS FOR CTE PROGRAMS

RELOCATE EXISTING DUST COLLECTOR TO PREVENT FUTURE DAMAGE FROM SNOW FALL, AND BETTER CONNECT FABRICATION TO EXTERIOR YARD SPACE.

