

Archuleta School District 50J Facilities Master Plan Update Demographic Section - DRAFT



Western Demographics, Inc.

July 20, 2007

Introduction

Archuleta School District 50J is a stable growth, resort-affected school district with a capital facility resource of adequate capacity, but challenged condition. The district has experienced a recent history of rapid residential growth and home price escalation, but this era ended abruptly in 2006 when the State-wide housing market and economy in general entered its current slump. Most local realtors and home builders estimate the current market at fifty percent of its prior level and hope for emergence within one year. State-wide and nationally, the economy is not expected to rebound until 2010 except in the Western Slope energy boom communities in the Grand Junction area where the economy is robust. This diminished economic condition has affected enrollment growth in the district and will continue to do so. This report addresses the economic and demographic factors that impact Archuleta School District 50J enrollment and predicts future enrollment.

Historical Enrollment Growth

The district has grown at approximately 1.2 percent per year not including preschool which is new this year. Student yield per home is approximately .38 based on 2000 census data which establishes 10,027 people in the county living in 4,060 households producing 1,565 students. Average household size was 2.47 and average family size was 2.89. These household sizes are typical of resort areas and are lower than averages in suburban areas. Most local realtors suppose that 90 percent of new housing does not have students as part of the household.

Table 1 – Archuleta School 50J District Enrollment – 2001 - 2006

Year	(K-4)	(5-6)	(7-8)	(9-12)	(PK-12)	Net Growth	Average Net Growth
2001	541	247	262	515	1565		
2002	560	257	263	508	1588	1.5%	
2003	551	231	260	511	1553	-2.2%	
2004	566	249	261	501	1577	1.5%	
2005	583	257	263	587	1690	7.2%	
2006	573	239	262	580	1654	-2.1%	1.2%

Projections Based on Current Trends

Given the most recent year of growth activity in the district, enrollments during the next three years are expected to be stable with little or no growth. This projection is based on an average history of the past two years, larger out-going grades (seniors) than those entering (kindergarten) and a slight decline in the birth rate.

Table 2 – Archuleta School 50J District Projections – Low Basis

Last 2 years.	(K-4)	(5-6)	(7-8)	(9-12)	(PK-12)	Most Likely Enrollment Next Three Years Based on Recent Trends
SY 06-07	568	252	250	571	1640	
SY 07-08	576	240	251	585	1651	
SY 08-09	582	229	264	567	1641	
SY 09-10	567	252	252	573	1643	
SY 10-11	567	258	240	574	1638	
SY 11-12	567	243	263	563	1635	
SY 12-13	567	243	269	564	1642	
SY 13-14	567	243	254	575	1638	
SY 14-15	567	243	254	570	1633	
SY 15-16	567	243	254	578	1641	

Projections Based on Return to 2003 – 2005 Housing Market Trends

After 2010, a return to the prior economic condition would be expected which could produce as many as 250 additional students over the ten year period. Expected enrollment growth lies between these low and high extremes with growth of approximately 125 most likely.

Table 3 – Archuleta School 50J District Projections – High Basis

Last three years.	(K-4)	(5-6)	(7-8)	(9-12)	(PK-12)	Immediate Return to Robust Housing Market	Percent Increase	
SY 06-07	573	259	250	560	1642			
SY 07-08	588	253	252	573	1666			1.5%
SY 08-09	605	243	272	555	1675			0.5%
SY 09-10	604	267	266	562	1698			1.4%
SY 10-11	620	273	256	570	1720			1.3%
SY 11-12	637	262	280	566	1745			1.5%
SY 12-13	654	269	286	576	1784			2.3%
SY 13-14	670	275	275	594	1814			1.7%
SY 14-15	687	282	282	590	1841			1.5%
SY 15-16	704	289	288	602	1883	2.3%		

Birth Rates

Birth rates are down a bit, but continue to be stable and equivalent with incoming kindergarten.

Table 4 – Archuleta School 50J Birth Rates

Year	Live Births
1990	85
1991	72
1992	66
1993	76
1994	59
1995	81
1996	80
1997	98
1998	84
1999	110
2000	111
2001	109
2002	124
2003	125
2004	117
2005	116

* Colorado Department of Health

Non Public Schools

Non-public enrollment has doubled during the past five years, but is expected to stabilize in the future. This growth has diminished public school market share a bit, but not dramatically so.

Table 5 – Archuleta School 50J Non-Public Schools

Year	School	PK	K	1	2	3	4	5	6	7	8	9	10	11	12	Total
2000	DISTRICT TOTAL (All Our Savior Lutheran)	28	8	8	7	7	7	9	2	1	0	0	0	0	0	77
2001	DISTRICT TOTAL (All Our Savior Lutheran)	33	15	7	7	7	6	9	8	1	2	0	0	0	0	95
2002	DISTRICT TOTAL (All Our Savior Lutheran)	40	15	9	7	8	7	4	6	7	1	0	0	0	0	104
2003	DISTRICT TOTAL (All Our Savior Lutheran)	52	13	5	4	5	5	6	2	5	6	0	0	0	0	103
2004	DISTRICT TOTAL (Several Schools)	45	12	5	6	4	12	9	11	8	8	8	7	5	4	144
2005	DISTRICT TOTAL (Several Schools)	61	19	7	6	7	4	17	4	5	5	9	6	3	4	157

Available Detail

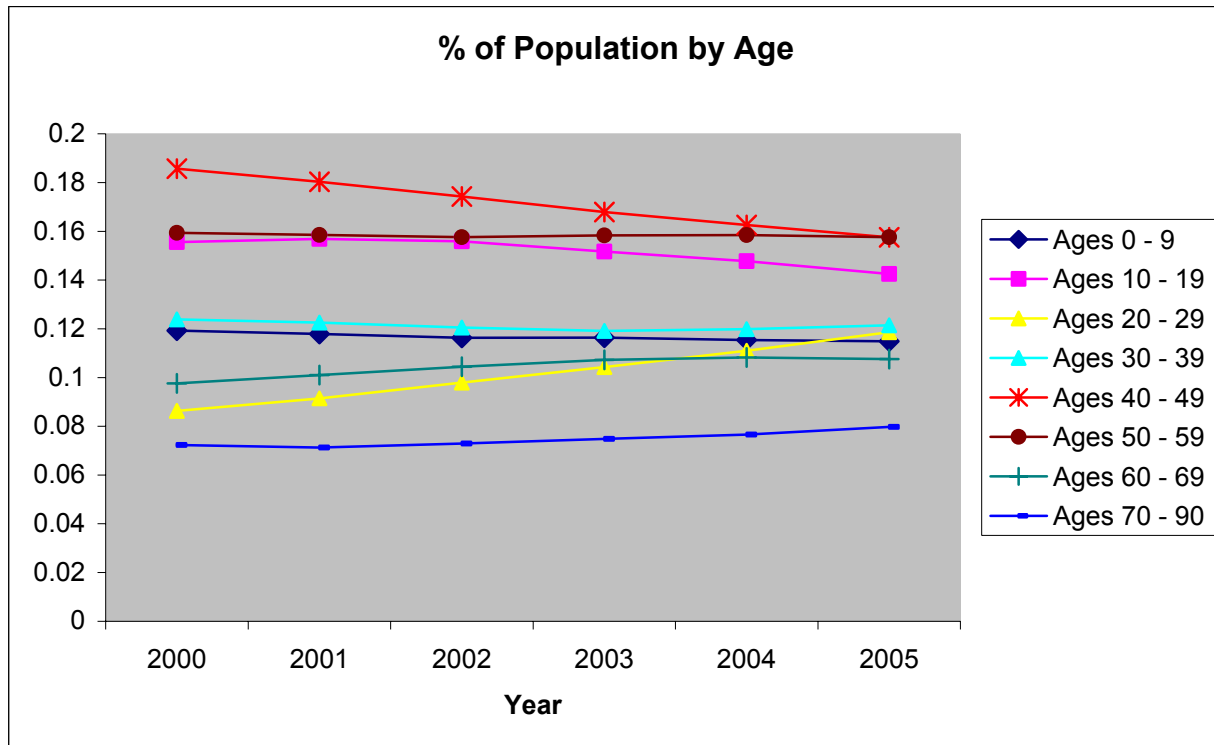
2004	OUR SAVIOR LUTHERAN SCHOOL	45	12	4	5	3	8	3	4	0	0	0	0	0	0	84
2004	PAGOSA SPRINGS EDUCATION CENTR	0	0	0	0	0	3	4	5	6	7	7	5	4	4	45
2004	SUMMIT ACADEMY	0	0	1	1	1	1	2	2	2	1	1	2	1	0	15
2005	OUR SAVIOR LUTHERAN SCHOOL	61	19	7	5	5	2	12	0	0	0	0	0	0	0	111
2005	PAGOSA SPRINGS EDUCATION CENTR	0	0	0	1	2	2	5	4	5	5	9	6	3	4	46

* Colorado Department of Education

Population Growth by Age Category

School-aged children have become a smaller portion of the population during the past five years while persons aged 20 - 29 have grown the most rapidly. This establishes a foundation for future enrollment growth, but explains the lower yields coming from new housing which is currently dominated by retirees and second home owners.

Graph 1 – Percent of Population by Age



- Archuleta Economic Development Association, 2006.

Table 6 - Archuleta School 50J – Population by Age Category

U.S. Census - Population by Age						
Year	Age Group	Total	% of Total Population	% Change from 2000 Census	Males	Females
2000	0 to 9	1,196	11.9%	N/A	632	564
2000	10 to 19	1,560	15.6%	N/A	826	734
2000	20 to 29	865	8.6%	N/A	450	415
2000	30 to 39	1,242	12.4%	N/A	594	648
2000	40 to 49	1,862	18.6%	N/A	901	961
2000	50 to 59	1,598	15.9%	N/A	805	793
2000	60 to 69	979	9.8%	N/A	508	471
2000	70 to 90	725	7.2%	N/A	365	360
2000 Total Population		10,027			5081	4946
2001	0 to 9	1,244	11.8%	4.0%	658	586
2001	10 to 19	1,655	15.7%	6.1%	871	784
2001	20 to 29	965	9.1%	11.6%	494	471
2001	30 to 39	1,293	12.3%	4.1%	629	664
2001	40 to 49	1,902	18.0%	2.1%	917	985
2001	50 to 59	1,672	15.8%	4.6%	838	834
2001	60 to 69	1,066	10.1%	8.9%	564	502
2001	70 to 90	752	7.1%	3.7%	377	375
2001 Total Population		10,549			5348	5201
2002	0 to 9	1,270	11.6%	6.2%	671	599
2002	10 to 19	1,702	15.6%	9.1%	890	812
2002	20 to 29	1,069	9.8%	23.6%	545	524
2002	30 to 39	1,316	12.1%	6.0%	647	669
2002	40 to 49	1,902	17.4%	2.1%	917	985
2002	50 to 59	1,720	15.8%	7.6%	856	864
2002	60 to 69	1,140	10.4%	16.4%	600	540
2002	70 to 90	796	7.3%	9.8%	400	396
2002 Total Population		10,915			5526	5389
2003	0 to 9	1,303	11.6%	8.9%	686	617
2003	10 to 19	1,698	15.2%	8.8%	888	810
2003	20 to 29	1,168	10.4%	35.0%	600	568
2003	30 to 39	1,334	11.9%	7.4%	654	680
2003	40 to 49	1,879	16.8%	0.9%	912	967
2003	50 to 59	1,772	15.8%	10.9%	872	900
2003	60 to 69	1,201	10.7%	22.7%	623	578
2003	70 to 90	837	7.5%	15.4%	421	416
2003 Total Population		11,192			5656	5536
2004	0 to 9	1,323	11.5%	10.6%	694	629
2004	10 to 19	1,694	14.8%	8.6%	879	815
2004	20 to 29	1,273	11.1%	47.2%	664	609
2004	30 to 39	1,374	12.0%	10.6%	673	701
2004	40 to 49	1,864	16.3%	0.1%	909	955
2004	50 to 59	1,817	15.8%	13.7%	888	929
2004	60 to 69	1,241	10.8%	26.8%	644	597
2004	70 to 90	878	7.7%	21.1%	442	436
2004 Total Population		11,464			5793	5671
Year	Age Group	Total	% of Total Population	% Change from 2000 Census	Males	Females
2005	0 to 9	1,366	11.5%	14.2%	712	654
2005	10 to 19	1,694	14.2%	8.6%	870	824
2005	20 to 29	1,410	11.9%	63.0%	745	665
2005	30 to 39	1,444	12.1%	16.3%	709	735
2005	40 to 49	1,873	15.8%	0.6%	910	963
2005	50 to 59	1,874	15.8%	17.3%	909	965
2005	60 to 69	1,279	10.8%	30.6%	658	621
2005	70 to 90	948	8.0%	30.8%	475	473
2005 Total Population		11,888			5988	5900
Projections include data from the 2000 Census						
Population totals for years prior to 2002 match population estimates						
Source: Colorado Demography Section						

* Archuleta Economic Development Association, 2006.

Long Term Population Growth

Long-term population estimates from the State Demographer continue the 3.7 percent growth rate diminishing a bit to 3.2 percent growth per year by 2030. Contrasting this to the 1.2 percent annual growth in student enrollment illustrates that the current growth dynamic is not families, but instead households mostly without students.

**Table 7
Population Growth & Projected Forecasts
Colorado Demography Section**

	Census	Estimates					Avg. Annual %
	2000	2001	2002	2003	2004	2005	Change 2000-2005
Archuleta	9,898	10,548	10,912	11,196	11,464	11,716	3.7%
Pagosa Springs	1,591	1,621	1,621	1,618	1,620	1,640	0.6%
Unincorporated	8,307	8,927	9,291	9,578	9,844	10,076	4.3%
Source: Colorado Demography Section estimates 8-2006							
Projected Population Growth							
Archuleta	2005	2010	2015	2020	2025	2030	
Population	11,716	14,108	16,632	19,546	22,880	30,538	
Avg. Annual % Change		3.8%	3.3%	3.3%	3.2%	3.2%	
Source: Colorado Demography Section estimates 8-2006							
These population figures, however, do not reflect the large number of seasonal residents in the area. A local							

Employment and Labor Force

The labor force is growing at approximately the same level as the population – 3.2 percent. It is expected to continue to grow at this rate.

**Table 8
Archuleta County Employment - Colorado Department of Labor - 2000 - 2006**

Year	January	February	March	April	May	June	July	August	Sept	October	November	December	Annual Ave	Annual Change	Average Growth For Period
2000	4,599	4,555	4,795	4,831	4,999	5,154	5,168	5,096	4,973	4,931	4,684	4,600	4,865		
2001	4,532	4,649	4,743	4,813	5,103	5,345	5,537	5,538	5,489	5,395	5,148	4,998	5,108	5.0%	
2002	4,952	5,021	5,073	5,063	5,449	5,780	5,689	5,739	5,635	5,514	5,201	5,121	5,353	4.8%	
2003	5,077	4,957	4,953	4,993	5,221	5,280	5,440	5,572	5,415	5,520	5,296	5,096	5,235	-2.2%	
2004	5,078	5,055	5,059	5,156	5,463	5,693	5,719	5,735	5,718	5,799	5,562	5,353	5,449	4.1%	
2005	5,297	5,243	5,209	5,374	5,648	5,968	5,895	5,863	5,929	6,098	5,876	5,752	5,679	4.2%	
2006	5,760	5,884	5,913	6,020	6,198	6,476	6,416	6,528	6,513	6,389	6,212	5,934	6,187	8.9%	3.2%

* Colorado Department of Labor

Table 9

Archuleta County Laborforce - Colorado Department of Labor - 2000 - 2006															
Year	January	February	March	April	May	June	July	August	Sept	October	November	December	Annual Ave	Annual Change	Average Growth For Period
2000	4,796	4,761	4,990	4,984	5,139	5,323	5,324	5,243	5,111	5,065	4,827	4,739	5,025		
2001	4,733	4,845	4,970	5,001	5,272	5,538	5,730	5,733	5,684	5,602	5,395	5,315	5,319	5.9%	
2002	5,320	5,407	5,450	5,389	5,723	6,086	5,989	6,012	5,886	5,782	5,480	5,428	5,663	6.5%	
2003	5,435	5,319	5,342	5,334	5,546	5,631	5,760	5,872	5,706	5,798	5,607	5,422	5,564	-1.7%	
2004	5,477	5,431	5,431	5,455	5,751	6,029	6,014	6,020	5,985	6,084	5,868	5,676	5,768	3.7%	
2005	5,690	5,648	5,598	5,696	5,941	6,292	6,198	6,143	6,205	6,352	6,133	6,014	5,992	3.9%	
2006	6,074	6,193	6,205	6,440	6,754	6,687	6,790	6,757	6,622	6,457	6,184	6,453		7.7%	3.6%

* Colorado Department of Labor

Unemployment

Unemployment has been stable during the past six years at around 4.8 percent – consistent with State averages. There were approximately 266 unemployed persons in 2006. There tends to be more unemployment in Winter.

Table 10

Archuleta County Unemployment Percentage - Colorado Department of Labor - 2000 - 2006															
Year	January	February	March	April	May	June	July	August	Sept	October	November	December	Annual Ave	Annual Change	Average For Period
2000	4.1	4.3	3.9	3.1	2.7	3.2	2.9	2.8	2.7	2.6	3.0	2.9	3.2		
2001	4.2	4.0	4.6	3.8	3.2	3.5	3.4	3.4	3.4	3.7	4.6	6.0	4.0		
2002	6.9	7.1	6.9	6.0	4.8	5.0	5.0	4.5	4.3	4.6	5.1	5.7	5.5		
2003	6.6	6.8	7.3	6.4	5.9	6.2	5.6	5.1	5.1	4.8	5.5	6.0	5.9		
2004	7.3	6.9	6.8	5.5	5.0	5.6	4.9	4.7	4.5	4.7	5.2	5.7	5.5		
2005	6.9	7.2	6.9	5.7	4.9	5.1	4.9	4.6	4.4	4.0	4.2	4.4	5.2		
2006	5.2	5.0	4.7	4.1	3.8	4.1	4.1	3.9	3.6	3.5	3.8	4.0	4.1		4.8

* Colorado Department of Labor

Table 11

Archuleta County Unemployment Counts - Colorado Department of Labor - 2000 - 2006															
Year	January	February	March	April	May	June	July	August	Sept	October	November	December	Annual Ave	Annual Change	
2000	197	206	195	153	140	169	156	147	138	134	143	139	160		
2001	201	196	227	188	169	193	193	195	195	207	247	317	211	31.9%	
2002	368	386	377	326	274	306	300	273	251	268	279	307	310	46.9%	
2003	358	362	389	341	325	351	320	300	291	278	311	326	329	6.1%	
2004	399	376	372	299	288	336	295	285	267	285	306	323	319	-3.0%	
2005	393	405	389	322	293	324	303	280	276	254	257	262	313	-1.9%	
2006	314	309	292	257	242	278	271	262	244	233	245	250	266	-15.0%	

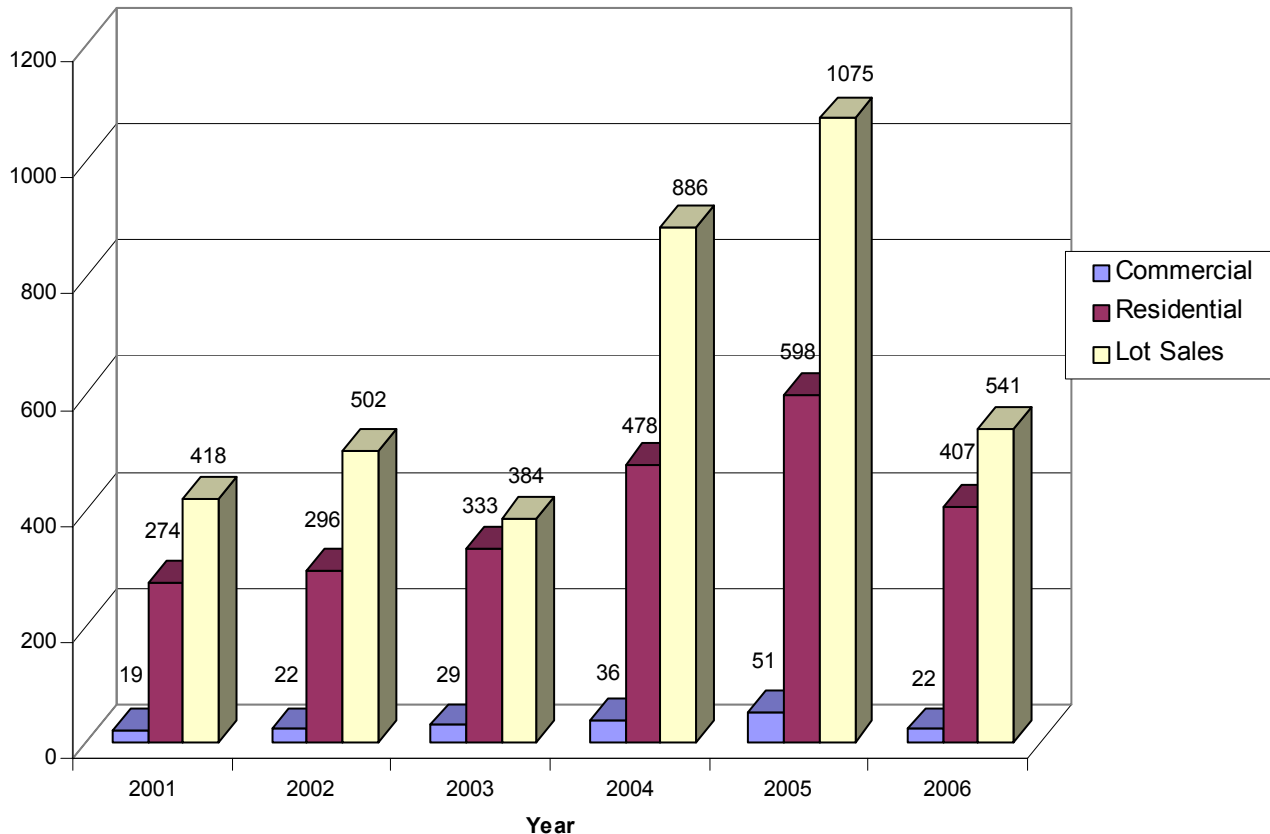
* Colorado Department of Labor

Real Estate and Development

Most realtors and home builders polled estimated the mid-2007 market to be fifty percent of its mid-2005 level. By year end 2006, lot sales had been cut in half and residential sales were at two-thirds of prior levels as shown in the following graph. Most residential development in the district is decentralized and is outside of the Town of Pagosa Springs. Pagosa Lakes is a leading development area.

Graph 2

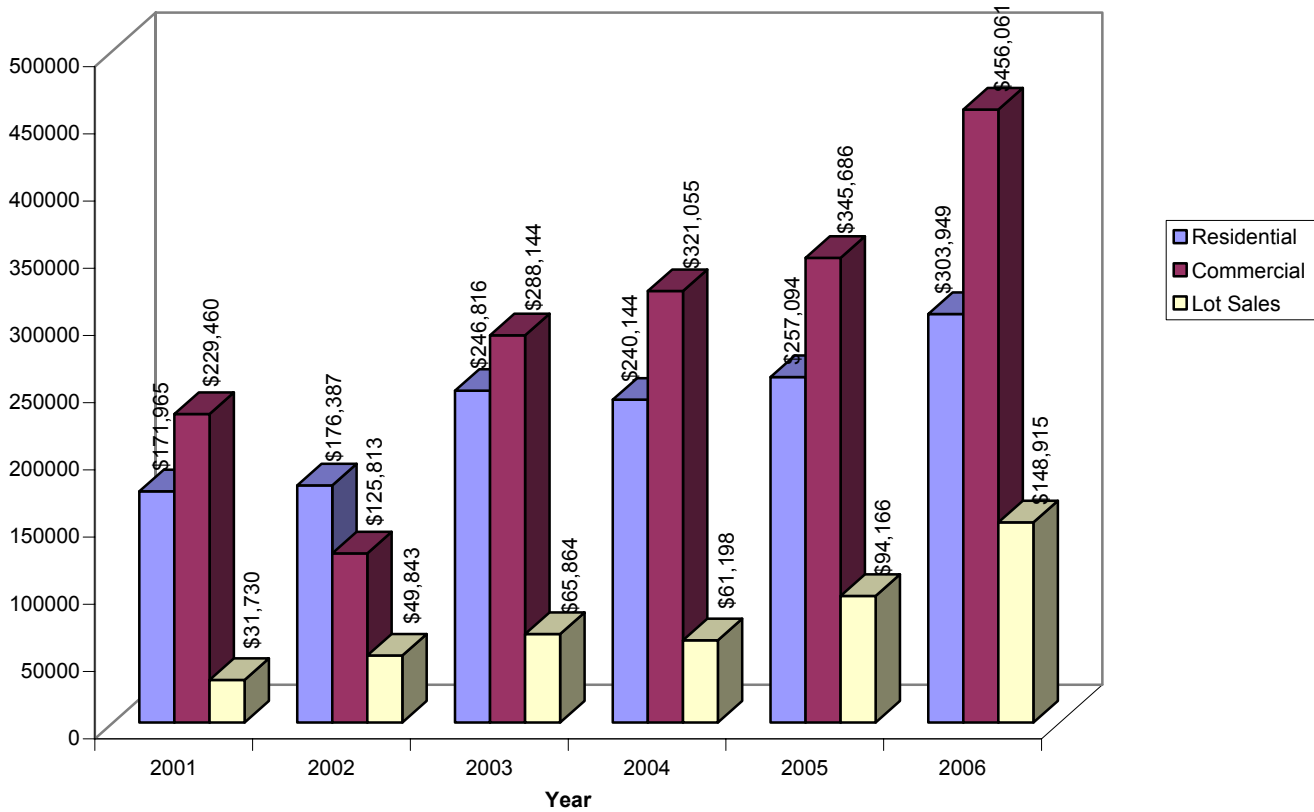
Number of Properties Sold: 2001 - 2006



* Archuleta Economic Development Association, 2006.

Graph 3

Avg Sales Price - 2001 - 2006



* Archuleta Economic Development Association, 2006.

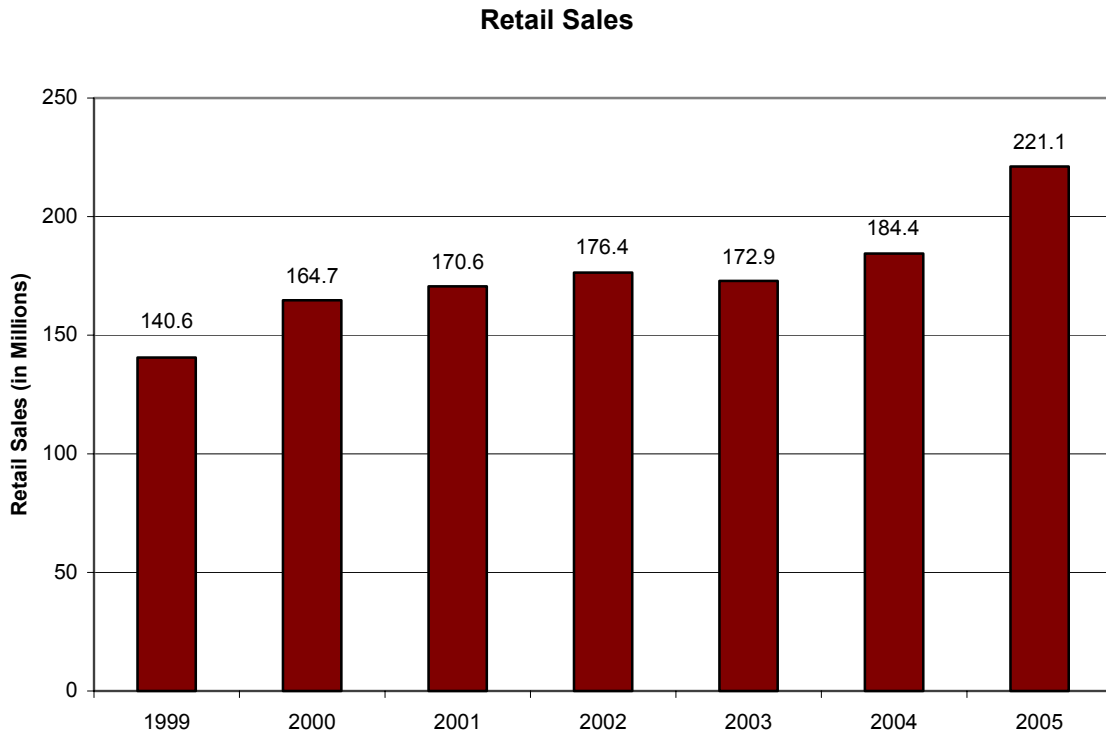
Public Housing

The Town of Pagosa Springs has a robust public housing program that well serves the needs of lower income families. There are no plans for significant expansion of this program at a volume that would affect school enrollments.



Retail Sales

Retail sales were up in 2005, but most authorities on Archuleta suppose that restaurant volume and retail sales are both down as a result of high fuel prices and the diminished economy.



* Archuleta Economic Development Association, 2006.

Conclusion

Archuleta School District 50J will continue to grow at approximately 1.2 percent per year until 2010 when growth rates may improve to 2 – 2.5 percent per year. Enrollment will remain static or stable until 2010 after which 125 – 250 new students may be produced during the ten-year period ending in 2016.

Appendix – Projection Details

Total District Projections - 7/19/07																				
Historical Enrollment by Grade																				
Year	K	1	2	3	4	5	6	7	8	9	10	11	12	(K-4)	(5-6)	(7-8)	(9-12)	(PK-12)	Net Growth	Average Net Growth
2001	99	111	105	115	111	131	116	138	124	123	150	130	112	541	247	262	515	1565		
2002	120	104	116	108	112	110	147	116	147	129	122	145	112	560	257	263	508	1588	1.5%	
2003	90	130	111	109	111	113	118	139	121	149	125	111	126	551	231	260	511	1553	-2.2%	
2004	100	112	123	111	120	125	124	119	142	126	155	119	101	566	249	261	501	1577	1.5%	
2005	111	116	108	123	125	118	139	137	126	150	135	163	139	583	257	263	587	1690	7.2%	
2006	100	135	108	104	126	122	117	130	132	133	150	130	167	573	239	262	580	1654	-2.1%	1.2%
Change:																				
	K to K	K to 1	1 to 2	2 to 3	3 to 4	4 to 5	5 to 6	6 to 7	7 to 8	8 to 9	9 to 10	10 to 11	11 to 12	(K-4)	(5-6)	(7-8)	(9-12)	(PK-12)		
01-02	21	5	5	3	-3	-1	16	0	9	5	-1	-5	-18	31	15	9	-19	36		
02-03	-30	10	7	-7	3	1	8	-8	5	2	-4	-11	-19	-17	9	-3	-32	-43		
03-04	10	22	-7	0	11	14	11	1	3	5	6	-6	-10	36	25	4	-5	60		
04-05	11	16	-4	0	14	-2	14	13	7	8	9	8	20	37	12	20	45	114		
05-06	-11	24	-8	-4	3	-3	-1	-9	-5	7	0	-5	4	4	-4	-14	6	-8		
Average Annual																				
	K to K	K to 1	1 to 2	2 to 3	3 to 4	4 to 5	5 to 6	6 to 7	7 to 8	8 to 9	9 to 10	10 to 11	11 to 12	(K-4)	(5-6)	(7-8)	(9-12)	(PK-12)		
Last 5	0	15	-1	-2	6	2	10	-1	2	5	2	-4	-5	18	11	3	-1	32		
Last 3	3	21	-6	-1	9	3	8	2	4	7	5	-1	5	26	11	3	15	55		
3 Year Weighted	0	21	-7	-2	8	0	6	0	0	7	4	-1	7	20	6	0	17	44		
Last 2	0	20	-6	-2	9	-3	7	2	1	8	5	2	12	21	4	3	26	53		
Last 1	-11	24	-8	-4	3	-3	-1	-9	-5	7	0	-5	4	4	-4	-14	6	-8		
Projected Enrollment by Grade																				
Year	K	1	2	3	4	5	6	7	8	9	10	11	12	(K-4)	(5-6)	(7-8)	(9-12)	(PK-12)		
2006	100	135	108	104	126	122	117	130	132	133	150	130	167	573	239	262	580	1654		
Last five years.																				
	K	1	2	3	4	5	6	7	8	9	10	11	12	(K-4)	(5-6)	(7-8)	(9-12)	(PK-12)		
SY 06-07	100	115	134	106	110	128	132	116	134	137	135	146	125	565	259	250	544	1619		
SY 07-08	100	116	114	132	112	111	137	131	120	139	139	131	142	574	249	251	551	1625		
SY 08-09	101	116	114	112	138	114	121	137	135	126	141	136	127	581	235	272	529	1616		
SY 09-10	101	116	114	113	118	139	123	120	141	140	128	137	131	562	263	261	536	1622		
SY 10-11	101	116	115	113	118	120	149	123	124	146	142	124	133	563	269	247	545	1623		
SY 11-12	101	116	115	113	118	120	129	148	127	130	148	138	119	564	249	275	535	1623		
SY 12-13	101	117	115	113	119	120	130	129	152	132	132	144	134	565	250	281	542	1637		
SY 13-14	102	117	115	113	119	120	130	129	133	158	134	128	140	566	250	262	559	1637		
SY 14-15	102	117	115	114	119	121	130	129	133	138	160	130	123	567	251	262	551	1630		
SY 15-16	102	117	116	114	119	121	130	129	133	138	140	156	126	568	251	262	560	1641		

													(K-4)	(5-6)	(7-8)	(9-12)	(PK-12)	Immediate Return to Robust Housing Market	Percent Increase	
Last three years.	K	1	2	3	4	5	6	7	8	9	10	11	12							
SY 06-07	103	121	129	107	113	129	130	119	132	139	138	149	135	573	259	250	560	1642		
SY 07-08	107	124	114	127	116	116	137	132	120	138	144	137	154	588	253	252	573	1666		1.5%
SY 08-09	110	127	118	113	137	119	124	139	133	127	143	143	142	605	243	272	555	1675		0.5%
SY 09-10	113	131	121	116	122	140	127	126	140	140	132	142	147	604	267	266	562	1698		1.4%
SY 10-11	117	134	124	120	126	125	148	129	128	147	145	131	147	620	273	256	570	1720		1.3%
SY 11-12	120	137	128	123	129	129	133	149	130	134	152	144	136	637	262	280	566	1745		1.5%
SY 12-13	123	141	131	126	132	132	137	135	151	137	139	151	149	654	269	286	576	1784		2.3%
SY 13-14	127	144	134	130	136	135	140	138	137	158	142	138	156	670	275	275	594	1814		1.7%
SY 14-15	130	147	138	133	139	139	143	142	140	143	163	141	143	687	282	282	590	1841		1.5%
SY 15-16	133	151	141	136	142	142	147	145	143	147	148	162	146	704	289	288	602	1883		2.3%
													(K-4)	(5-6)	(7-8)	(9-12)	(PK-12)			
3 year weighted avg.	K	1	2	3	4	5	6	7	8	9	10	11	12	(K-4)	(5-6)	(7-8)	(9-12)	(PK-12)		
SY 06-07	100	121	129	106	112	126	128	117	130	139	137	149	137	567	254	247	562	1631		
SY 07-08	100	121	115	127	114	112	132	128	117	137	143	136	156	576	244	245	573	1638		
SY 08-09	100	121	114	113	135	114	118	132	128	124	141	142	143	582	232	261	551	1625		
SY 09-10	99	121	114	112	121	135	120	118	133	135	128	141	149	567	255	251	553	1626		
SY 10-11	99	120	114	112	120	121	141	120	119	140	139	128	148	566	261	239	554	1620		
SY 11-12	99	120	114	112	120	121	127	141	121	126	144	139	135	565	247	261	542	1616		
SY 12-13	99	120	114	112	120	120	127	127	141	128	130	143	146	564	247	268	545	1624		
SY 13-14	99	120	114	112	120	120	126	127	127	148	132	129	150	564	247	254	558	1621		
SY 14-15	99	120	113	112	120	120	126	126	127	134	152	131	136	563	246	253	552	1614		
SY 15-16	98	120	113	111	120	120	126	126	127	134	138	151	138	562	246	253	561	1621		
													(K-4)	(5-6)	(7-8)	(9-12)	(PK-12)			
Last 2 years.	K	1	2	3	4	5	6	7	8	9	10	11	12	(K-4)	(5-6)	(7-8)	(9-12)	(PK-12)	Most Likely Enrollment Next Three Years Based on Recent Trends	
SY 06-07	100	120	129	106	113	124	129	119	131	140	138	152	142	568	252	250	571	1640		
SY 07-08	100	120	114	127	115	110	130	131	120	139	144	139	164	576	240	251	585	1651		
SY 08-09	100	120	114	112	136	112	117	132	132	128	143	146	151	582	229	264	567	1641		
SY 09-10	100	120	114	112	121	133	119	119	133	139	132	145	158	567	252	252	573	1643		
SY 10-11	100	120	114	112	121	118	140	121	120	141	144	134	157	567	258	240	574	1638		
SY 11-12	100	120	114	112	121	118	125	142	122	127	145	145	146	567	243	263	563	1635		
SY 12-13	100	120	114	112	121	118	125	127	143	129	132	147	157	567	243	269	564	1642		
SY 13-14	100	120	114	112	121	118	125	127	128	150	134	133	159	567	243	254	575	1638		
SY 14-15	100	120	114	112	121	118	125	127	128	135	155	135	145	567	243	254	570	1633		
SY 15-16	100	120	114	112	121	118	125	127	128	135	140	156	147	567	243	254	578	1641		
													(K-4)	(5-6)	(7-8)	(9-12)	(PK-12)			
Last 1 year.	K	1	2	3	4	5	6	7	8	9	10	11	12	(K-4)	(5-6)	(7-8)	(9-12)	(PK-12)		
SY 06-07	89	124	127	104	107	123	121	108	125	139	133	145	134	551	244	233	551	1579		
SY 07-08	78	113	116	123	107	104	122	112	103	132	139	128	149	537	226	215	548	1526		
SY 08-09	67	102	105	112	126	104	103	113	107	110	132	134	132	512	207	220	508	1447		
SY 09-10	56	91	94	101	115	123	103	94	108	114	110	127	138	457	226	202	489	1374		
SY 10-11	45	80	83	90	104	112	122	94	89	115	114	105	131	402	234	183	465	1284		
SY 11-12	34	69	72	79	93	101	111	113	89	96	115	109	109	347	212	202	429	1190		
SY 12-13	23	58	61	68	82	90	100	102	108	96	96	110	113	292	190	210	415	1107		
SY 13-14	12	47	50	57	71	79	89	91	97	115	96	91	114	237	168	188	416	1009		
SY 14-15	1	36	39	46	60	68	78	80	86	104	115	91	95	182	146	166	405	899		
SY 15-16	-10	25	28	35	49	57	67	69	75	93	104	110	95	127	124	144	402	797		