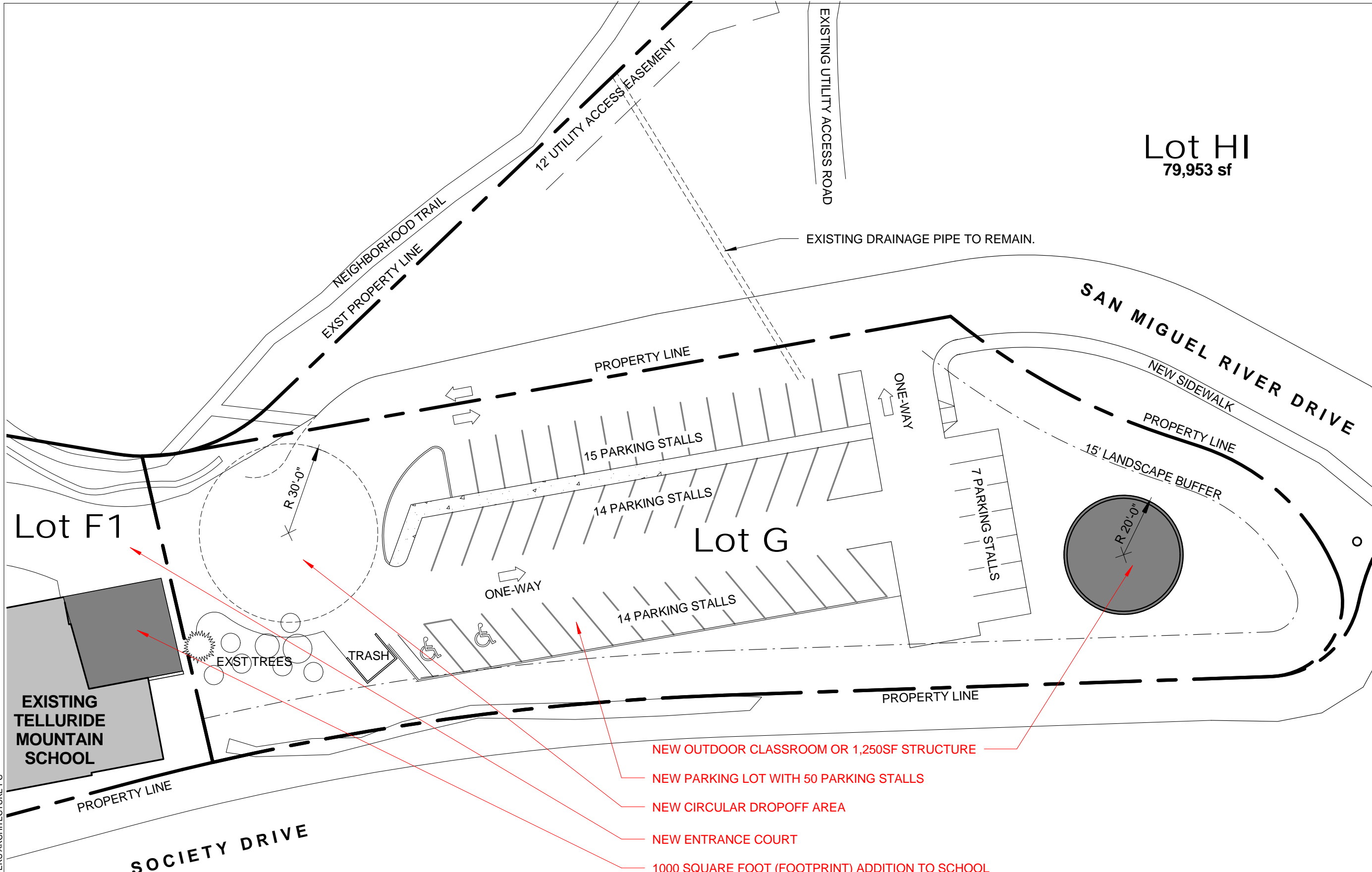


**TELLURIDE MOUNTAIN SCHOOL
OVERALL SITE PLAN - scheme A**

A.1

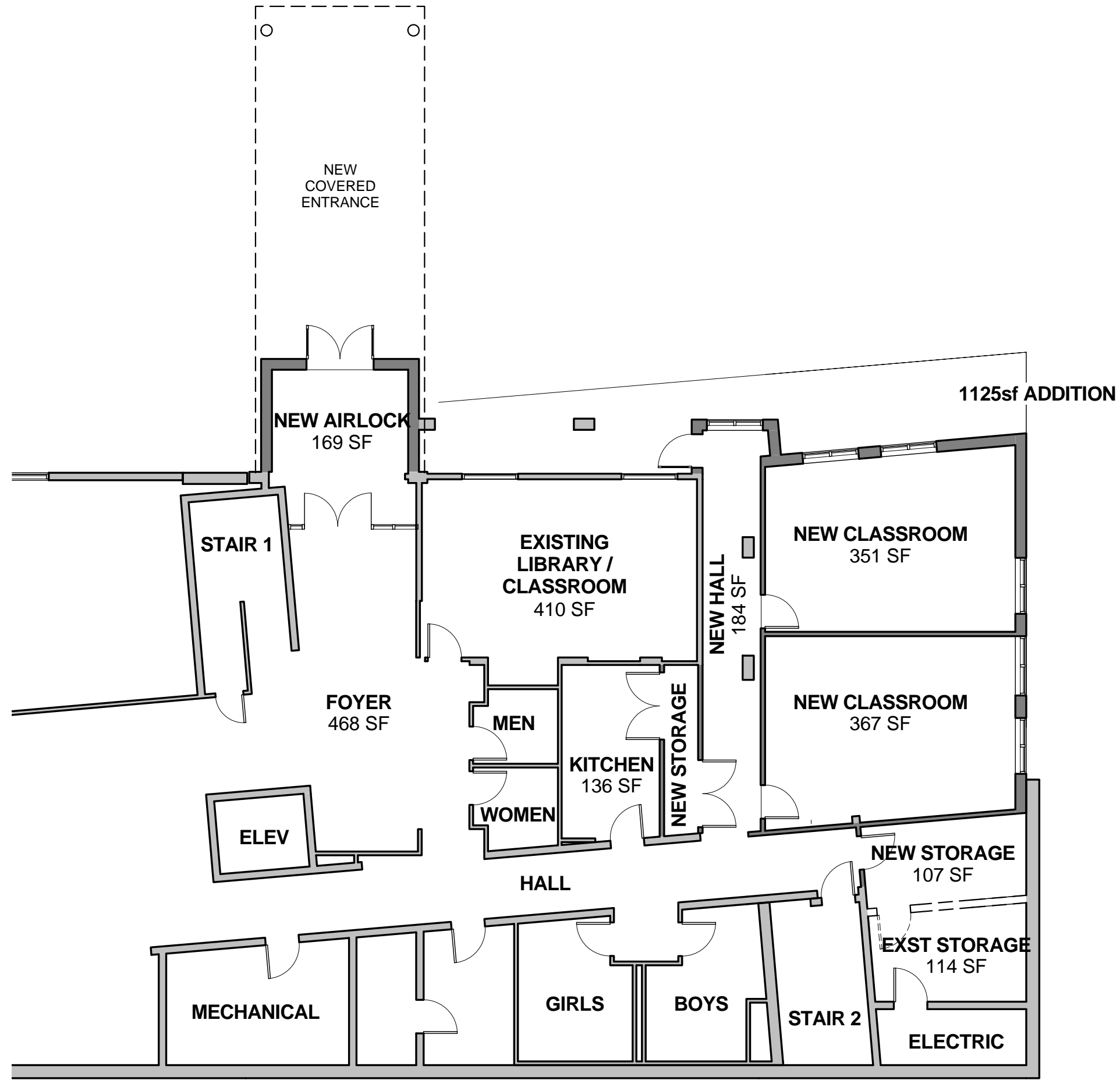
Scale 1" = 60'-0"
Project 1589
Date 05.16.16

EWERS ARCHITECTURE
1420 WASHINGTON AVENUE GOLDEN, COLORADO 80401
303.271.0977 www.ewersarchitecture.com



- NEW OUTDOOR CLASSROOM OR 1,250SF STRUCTURE
- NEW PARKING LOT WITH 50 PARKING STALLS
- NEW CIRCULAR DROPOFF AREA
- NEW ENTRANCE COURT
- 1000 SQUARE FOOT (FOOTPRINT) ADDITION TO SCHOOL

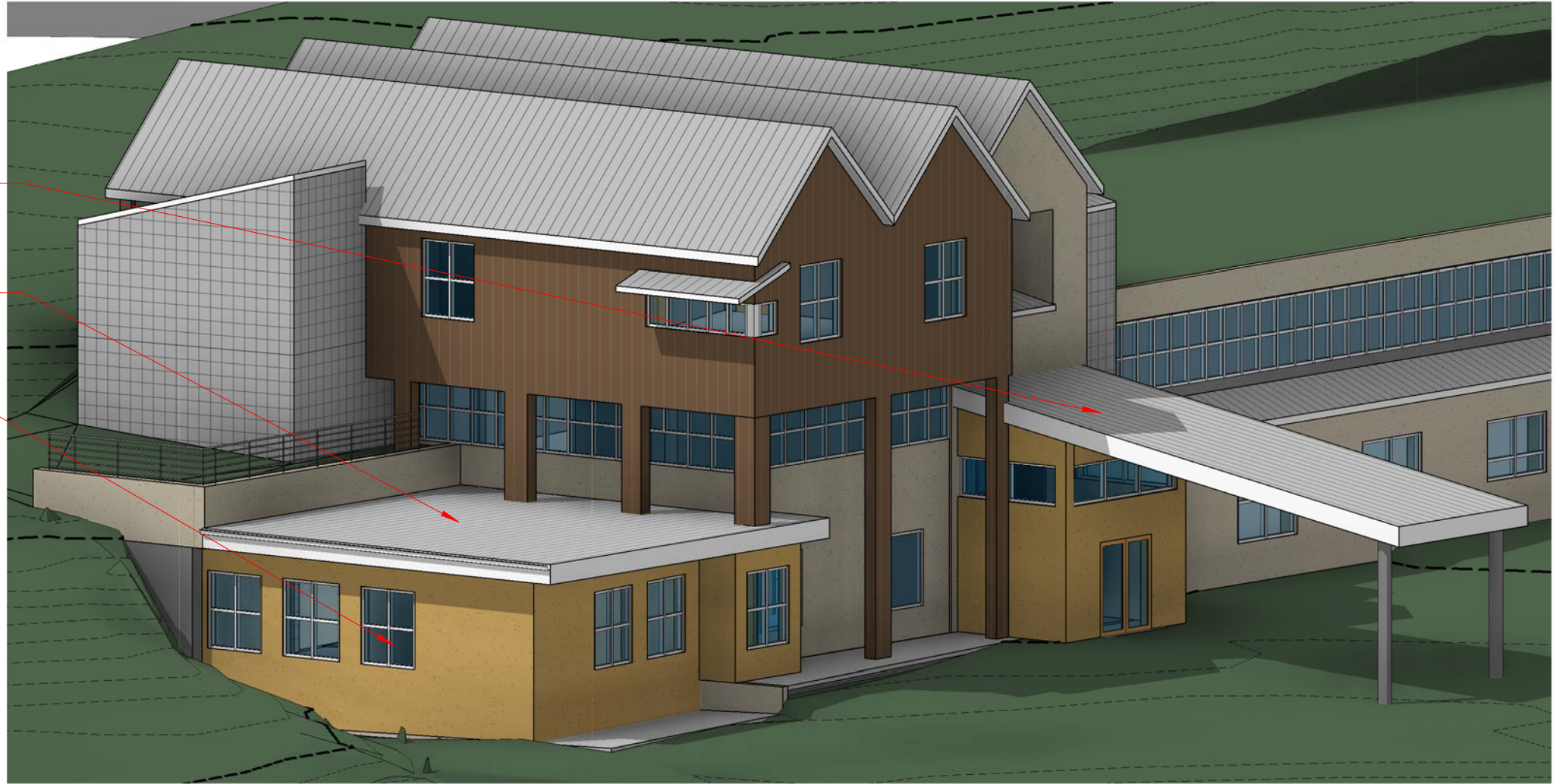
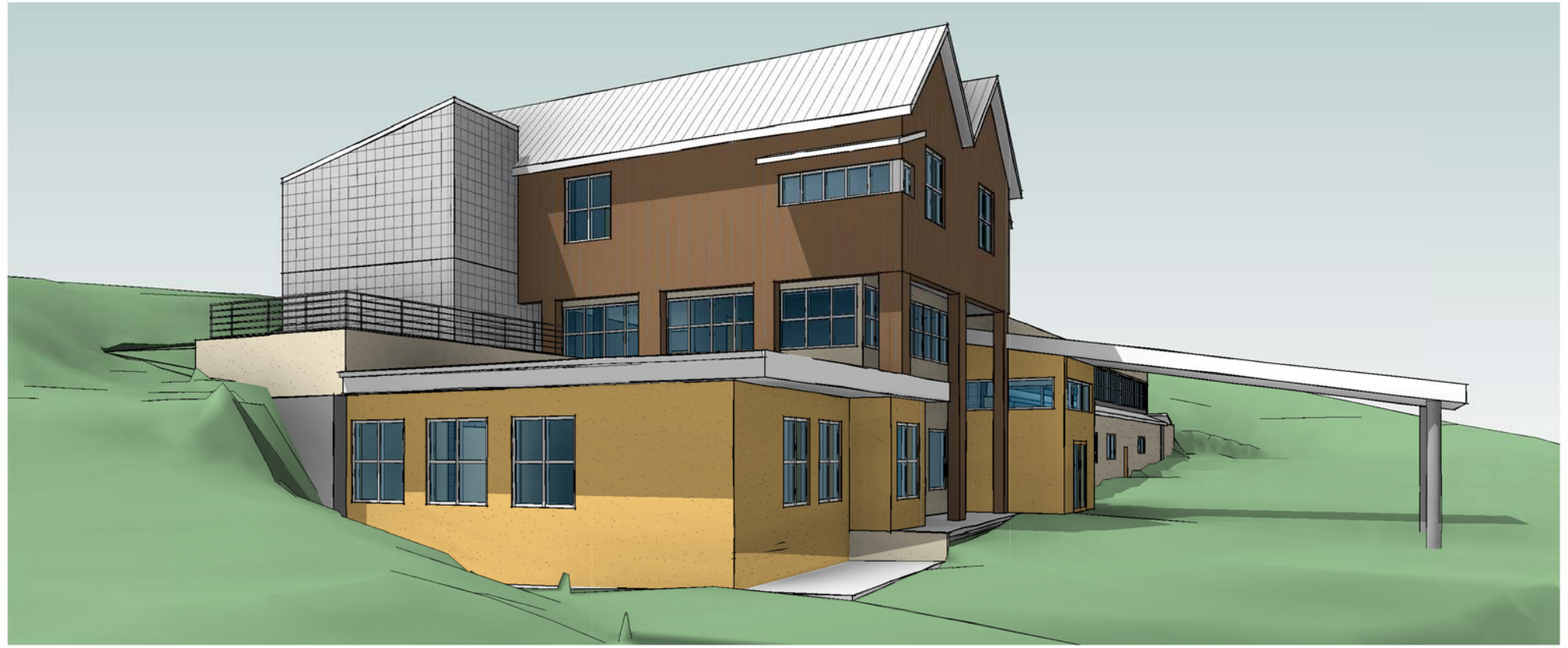
TELLURIDE MOUNTAIN SCHOOL
DETAIL SITE PLAN - scheme A



TELLURIDE MOUNTAIN SCHOOL
PROPOSED FLOOR PLAN - scheme A

A.3
 Scale 1" = 10'-0"
 Project 1589
 Date 05.16.16

ARCHITECTURE
 1420 WASHINGTON AVENUE GOLDEN COLORADO 80401
 303.271.0977 www.ewersarchitecture.com



NEW COVERED ENTRANCE WITH AIRLOCK

FLAT ROOF DESIGNED FOR FUTURE FLOORS ABOVE

ONE-STORY CLASSROOM ADDITION

TELLURIDE MOUNTAIN SCHOOL
3D VIEWS OF ADDITION - scheme A

A.4

Scale 1/8" = 1'-0"
Project 1589
Date 05.16.16

ARCHITECTURE
1420 WASHINGTON AVENUE GOLDEN, COLORADO 80401
303.271.0977 www.ewersarchitecture.com