

SITE INFORMATION

STREET ADDRESS:
200 SAN MIGUEL RIVER DRIVE
TELLURIDE, CO 81435

LEGAL DESCRIPTION:
LOTS F & G, LAWSON HILL SUBDIVISION, COUNTY OF SAN MIGUEL, STATE OF COLORADO

PROJECT DESCRIPTION

THIS PROJECT WILL TURN THE EXISTING PARKING AREA INTO A PLAYGROUND FOR THE SCHOOL, AND DEVELOP A NEW PARKING AREA ON THE NEWLY ACQUIRED LOT G TO THE EAST.

ZONING INFORMATION

JURISDICTION: SAN MIGUEL COUNTY
ZONE DISTRICT: LAWSON HILL PUD

PARKING: THE EXISTING PARKING LOT FOR THE SCHOOL, AS PREVIOUSLY APPROVED BY THE COUNTY, HAS 26 PARKING STALLS (INCLUDING 1 HANDICAP). THE NEW PARKING LOT WILL HAVE 34 STALLS (INCLUDING 2 HANDICAP).

BUILDING CODE INFORMATION

BUILDING CODE: 2003 INTERNATIONAL RESIDENTIAL CODE
OCCUPANCY CLASS: E (EDUCATION)
CONSTRUCTION TYPE: III-B

OWNER

TELLURIDE MOUNTAIN SCHOOL
P.O. BOX 3151
TELLURIDE, CO 81435
phone 970.728.1969
fax 970.369.4412
contact ERNIE PATTERSON
email epatterson@telluridemtnschool.org

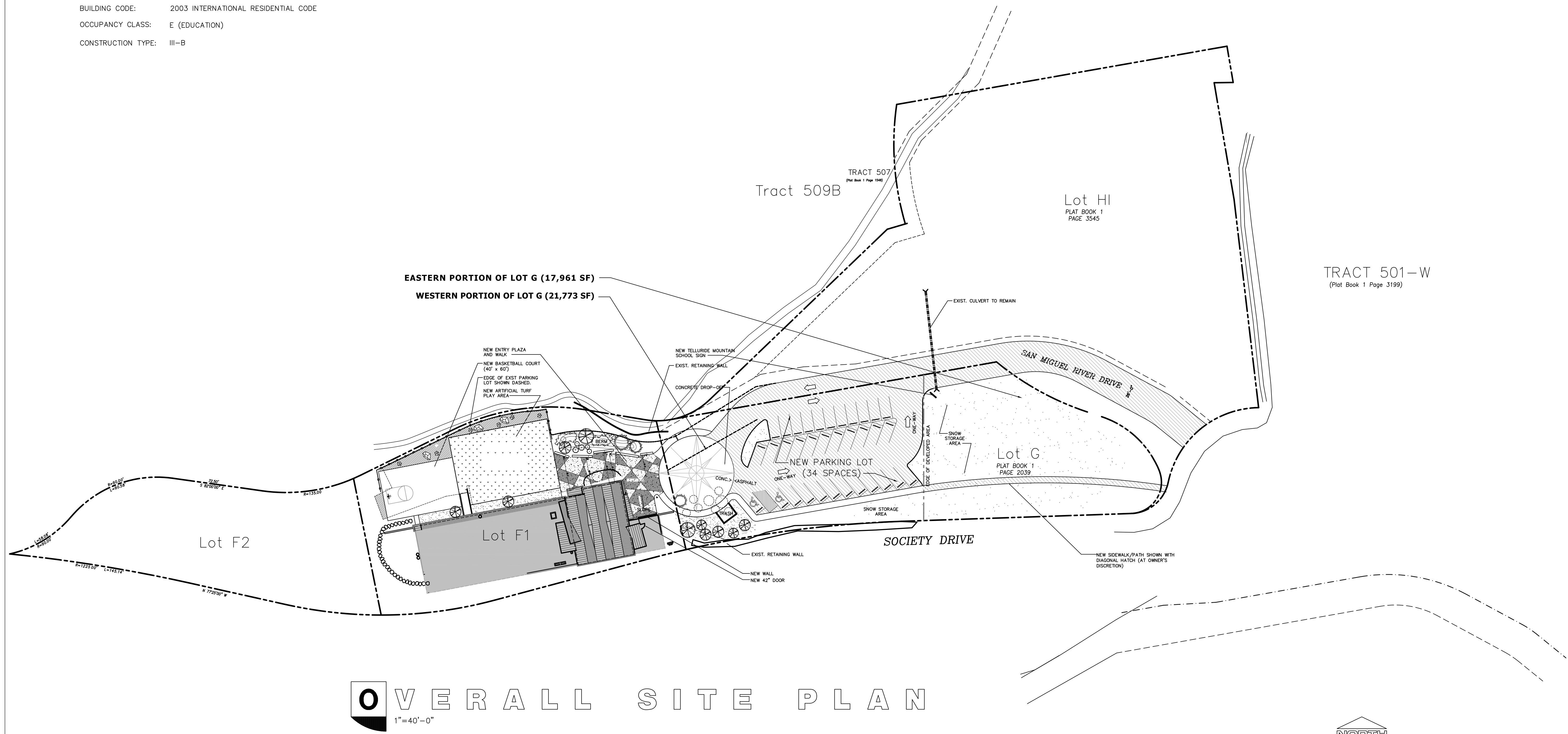
ARCHITECT

EWERS ARCHITECTURE
1420 WASHINGTON AVENUE
GOLDEN, COLORADO 80401
phone 303.271.0977
fax 303.271.0977
email peter@ewersarchitecture.com
website www.ewersarchitecture.com

contact PETER J. EWERS, AIA

DRAWING LIST

- A.1 OVERALL SITE PLAN; PROJECT INFORMATION
- A.2 PLAYGROUND DETAIL SITE PLAN
- A.3 PARKING LOT DETAIL SITE PLAN
- A.4 DETAILS
- A.5 TRASH ENCLOSURE DETAILS



OVERALL SITE PLAN
1"=40'-0"



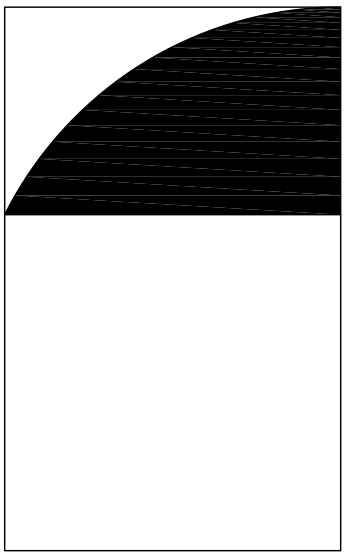
EWERS ARCHITECTURE
 1420 WASHINGTON AVENUE GOLDEN COLORADO 80401
 voice 303.271.0977 facsimile 303.271.0997
 www.ewersarchitecture.com peter@ewersarchitecture.com

SCALE	1"=40'-0"
PROJECT NUMBER	1333
DRAWN BY	MWM/PJE
CHECKED BY	PJE
FILENAME	1333-CD3
DATE	07.11.08
REVISIONS	08.05.08
	06.11.09

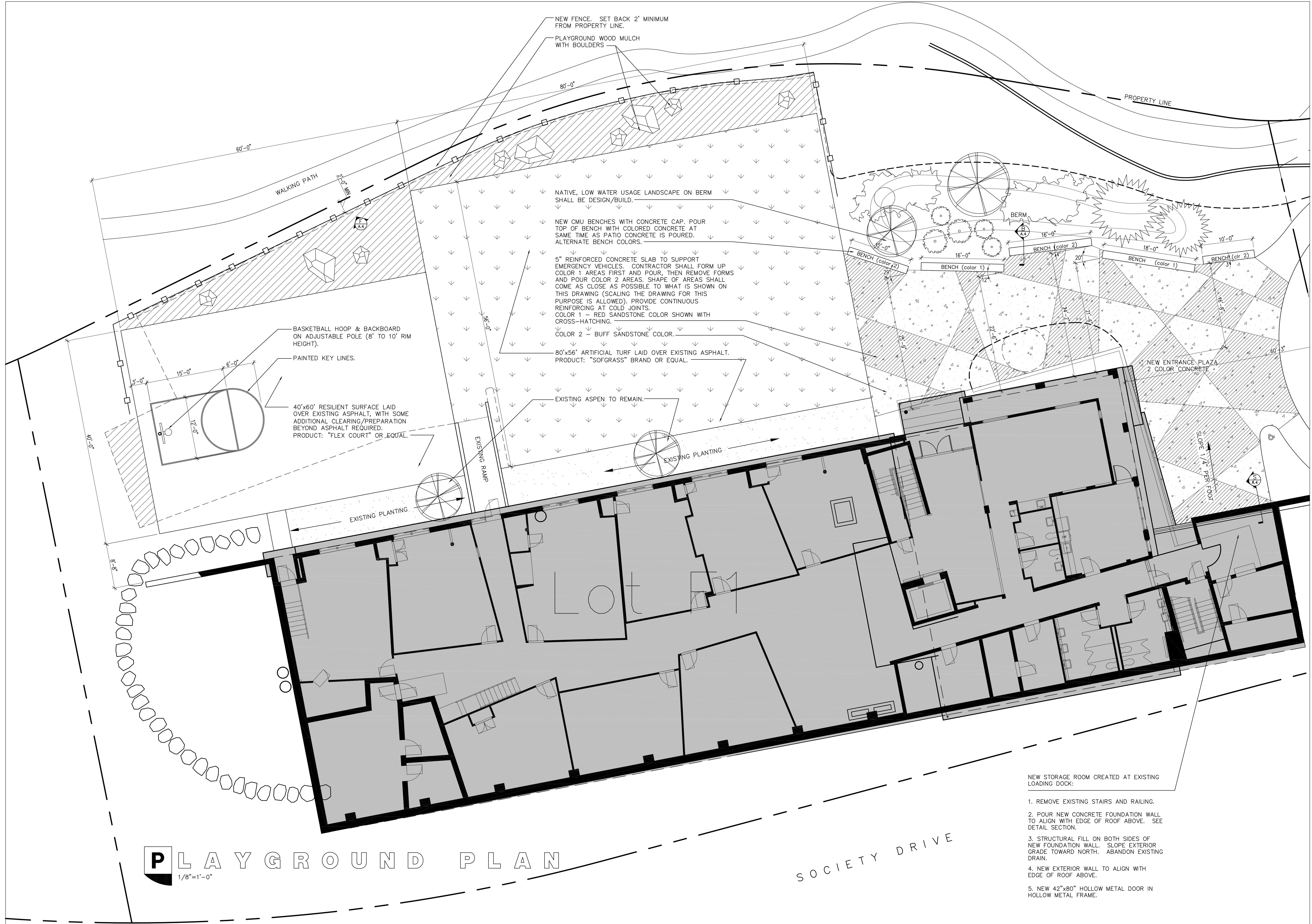
OVERALL SITE PLAN

TELLURIDE MOUNTAIN SCHOOL PLAYGROUND
 200 SAN MIGUEL RIVER DRIVE TELLURIDE COLORADO

A.1
CONSTRUCTION DOCUMENTS



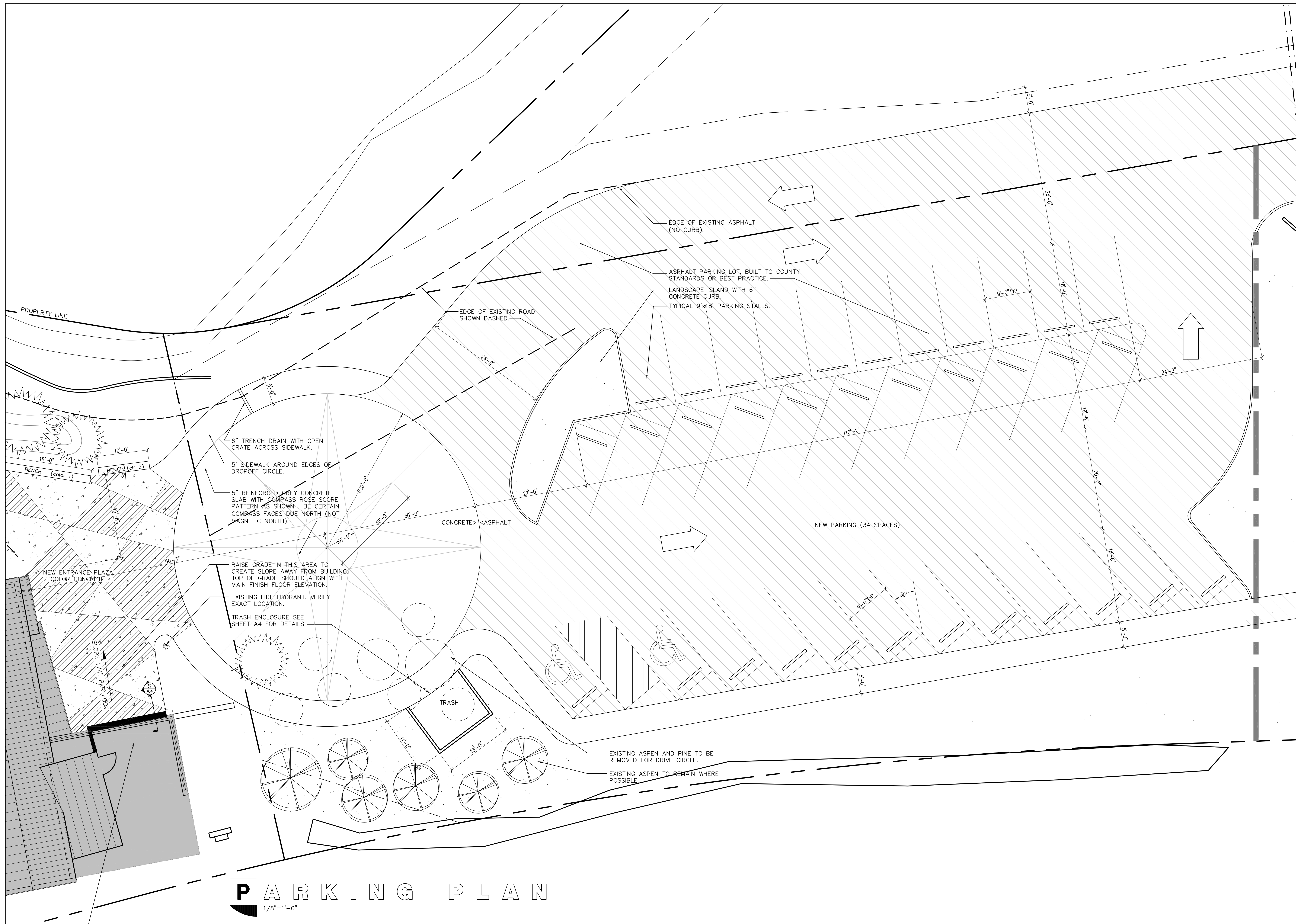
SCALE	1/8"=1'-0"
PROJECT NUMBER	1333
DRAWN BY	MWM/PJE
CHECKED BY	PJE
FILENAME	1333-CD2
DATE	07.11.08
REVISIONS	08.05.08



- NEW STORAGE ROOM CREATED AT EXISTING LOADING DOCK:
1. REMOVE EXISTING STAIRS AND RAILING.
 2. POUR NEW CONCRETE FOUNDATION WALL TO ALIGN WITH EDGE OF ROOF ABOVE. SEE DETAIL SECTION.
 3. STRUCTURAL FILL ON BOTH SIDES OF NEW FOUNDATION WALL. SLOPE EXTERIOR GRADE TOWARD NORTH. ABANDON EXISTING DRAIN.
 4. NEW EXTERIOR WALL TO ALIGN WITH EDGE OF ROOF ABOVE.
 5. NEW 42"x80" HOLLOW METAL DOOR IN HOLLOW METAL FRAME.

PLAYGROUND PLAN

1/8"=1'-0"



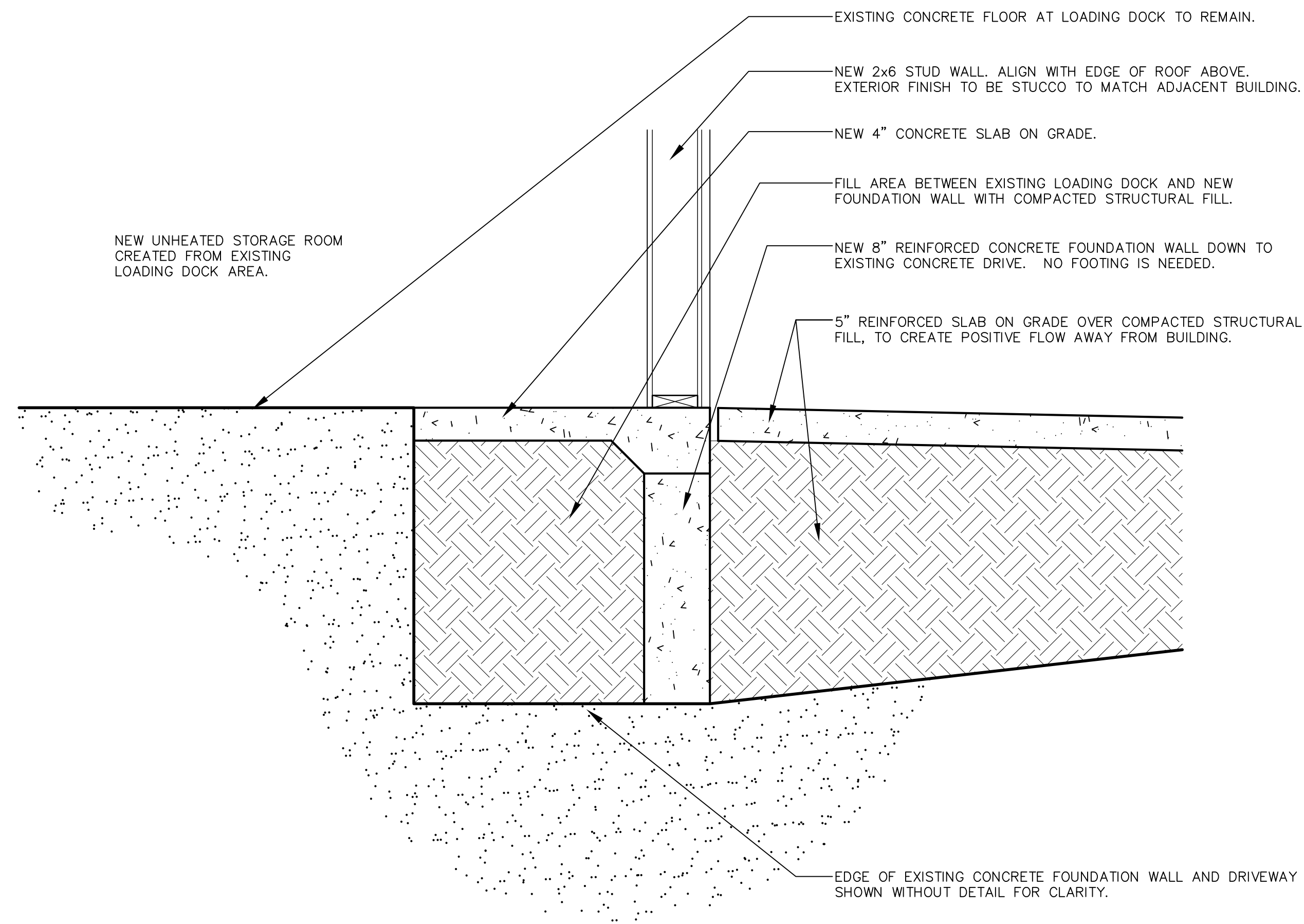
PARKING PLAN
1/8"=1'-0"

EMERS ARCHITECTURE
 1420 WASHINGTON AVENUE GOLDEN COLORADO 80401
 voice 303.271.0977 facsimile 303.271.0997
 www.emersarchitecture.com peter@emersarchitecture.com

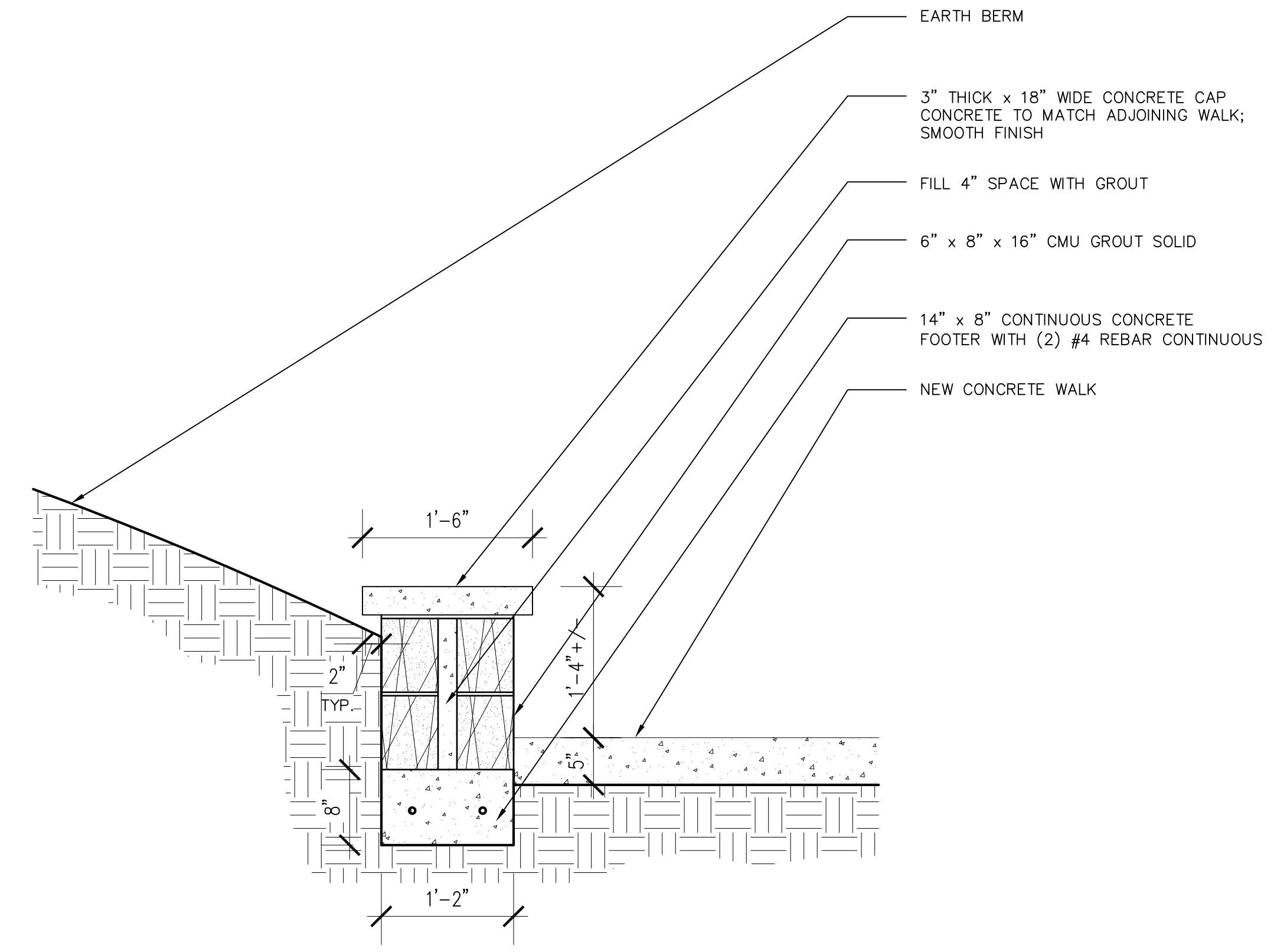
SCALE	1/8"=1'-0"
PROJECT NUMBER	1333
DRAWN BY	MWM/PJE
CHECKED BY	PJE
FILENAME	1333-CD2
DATE	07.11.08
REVISIONS	08.05.08

PARKING DETAIL SITE PLAN
TELLURIDE MOUNTAIN SCHOOL PLAYGROUND
 200 SAN MIGUEL RIVER DRIVE TELLURIDE COLORADO

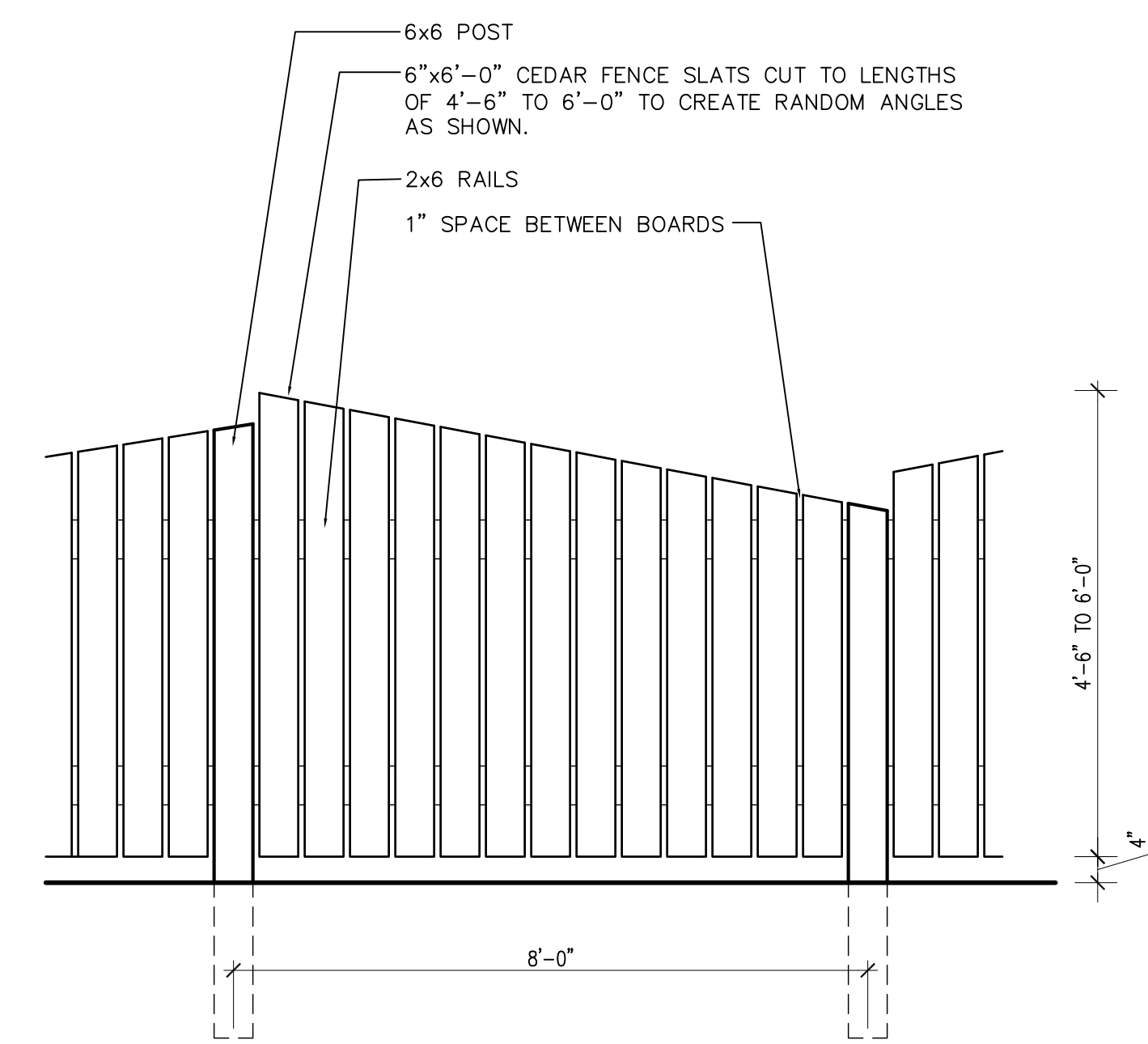
A.3
 CONSTRUCTION DOCUMENTS



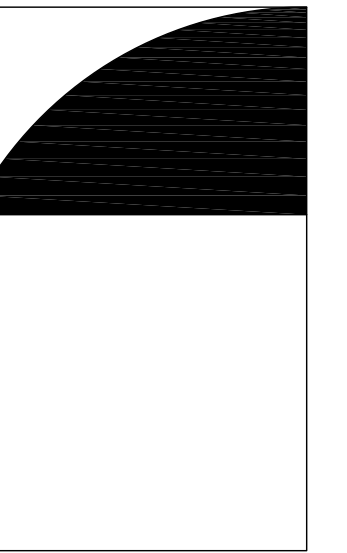
S E C T I O N @ L O A D I N G D O C K
1"=1'-0"



B E N C H D E T A I L
1"=1'-0"



F E N C E E L E V A T I O N
1/2"=1'-0"



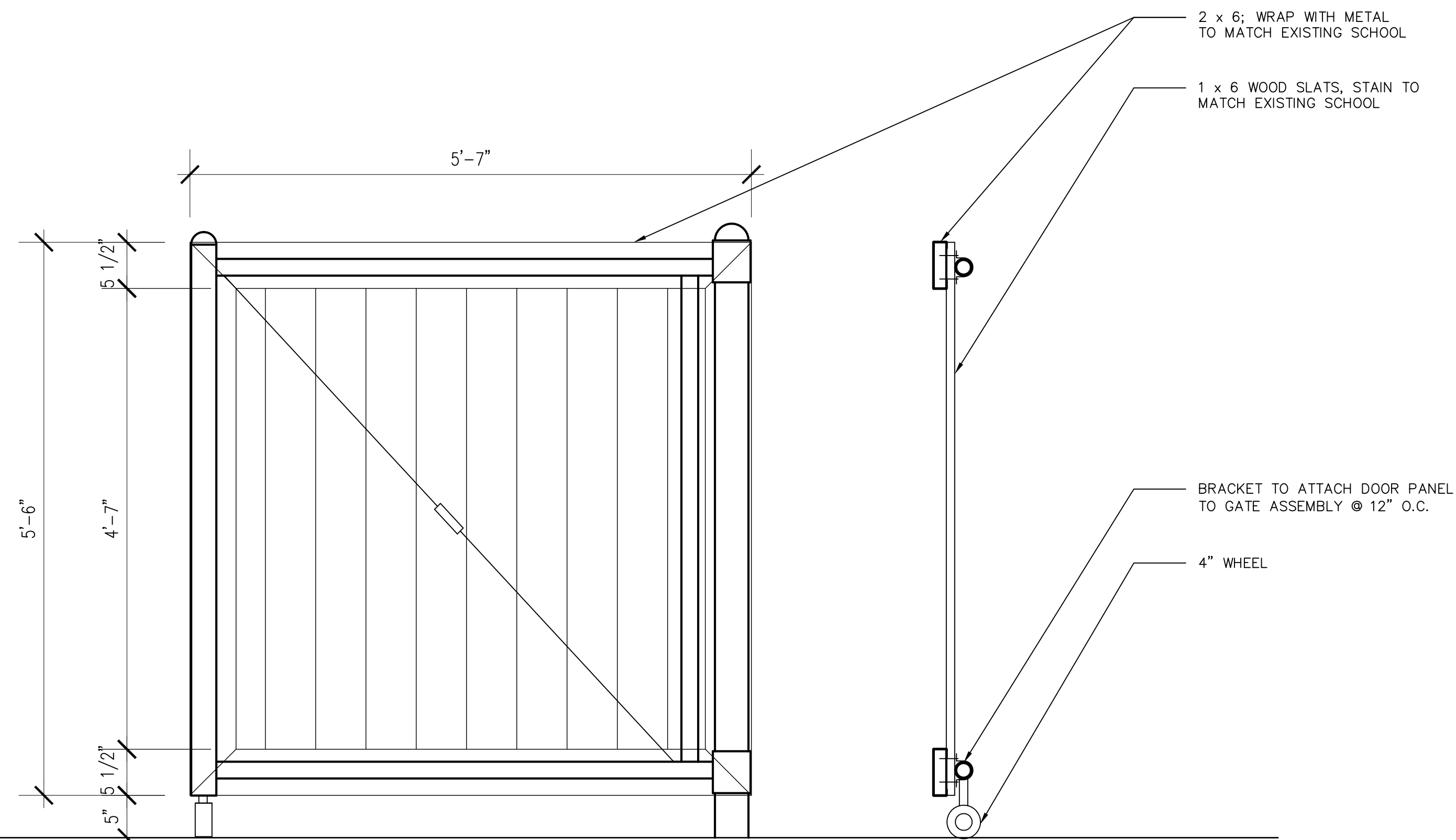
EMERS ARCHITECTURE
 1420 WASHINGTON AVENUE GOLDEN COLORADO 80401
 voice 303.271.0977 facsimile 303.271.0997
 www.emersarchitecture.com peter@emersarchitecture.com

SCALE	AS NOTED
PROJECT NUMBER	1333
DRAWN BY	MWM/PJE
CHECKED BY	PJE
FILENAME	1333-CD2
DATE	07.11.08
REVISIONS	

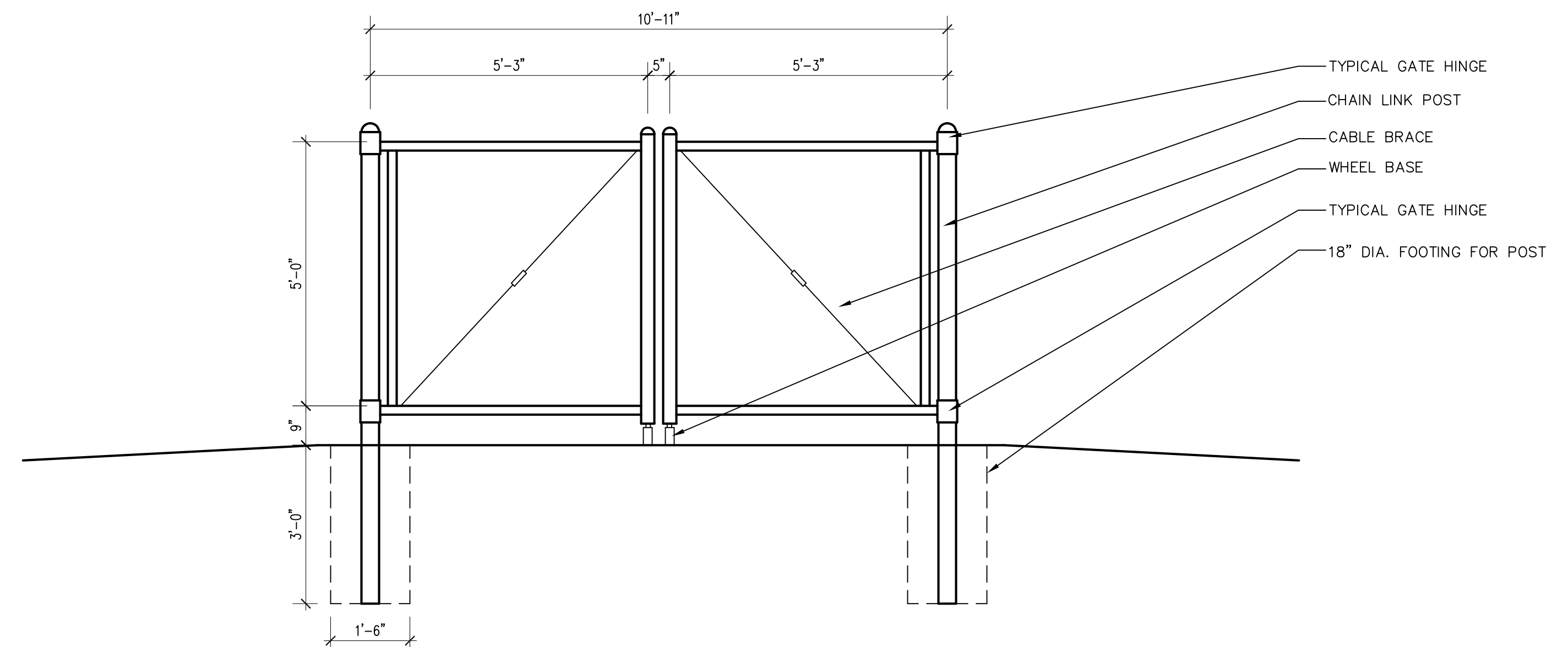
TELLURIDE MOUNTAIN SCHOOL PLAYGROUND
 200 SAN MIGUEL RIVER DRIVE TELLURIDE COLORADO

DETAILS

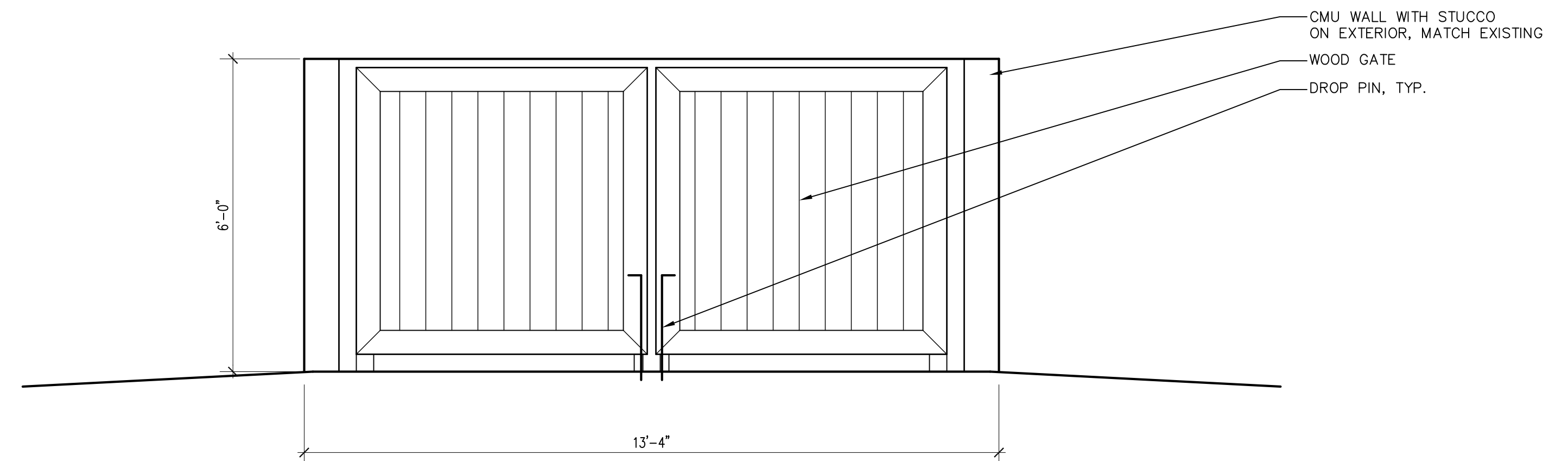
A.4
 CONSTRUCTION DOCUMENTS



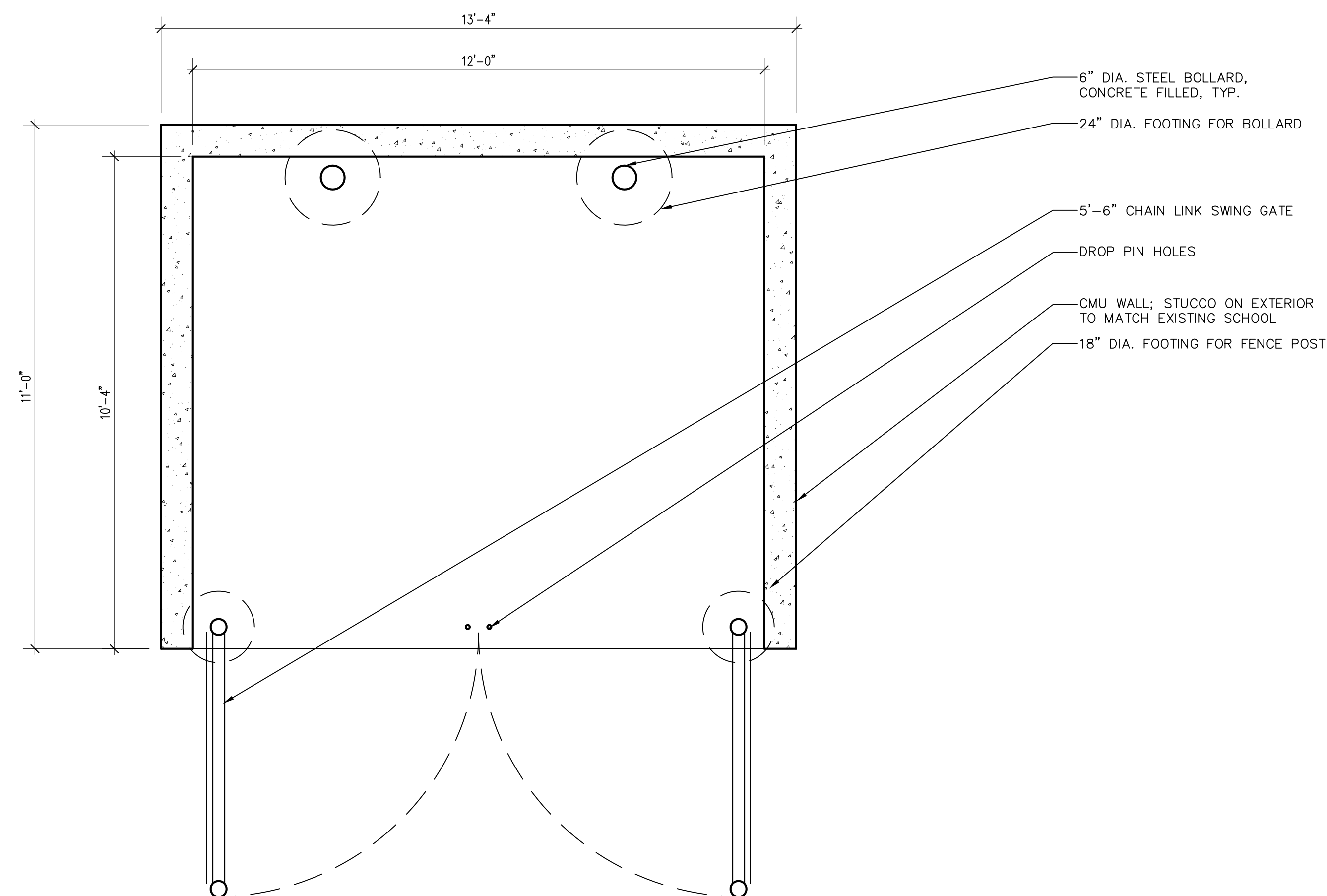
GATE DETAIL
1"=1'-0"



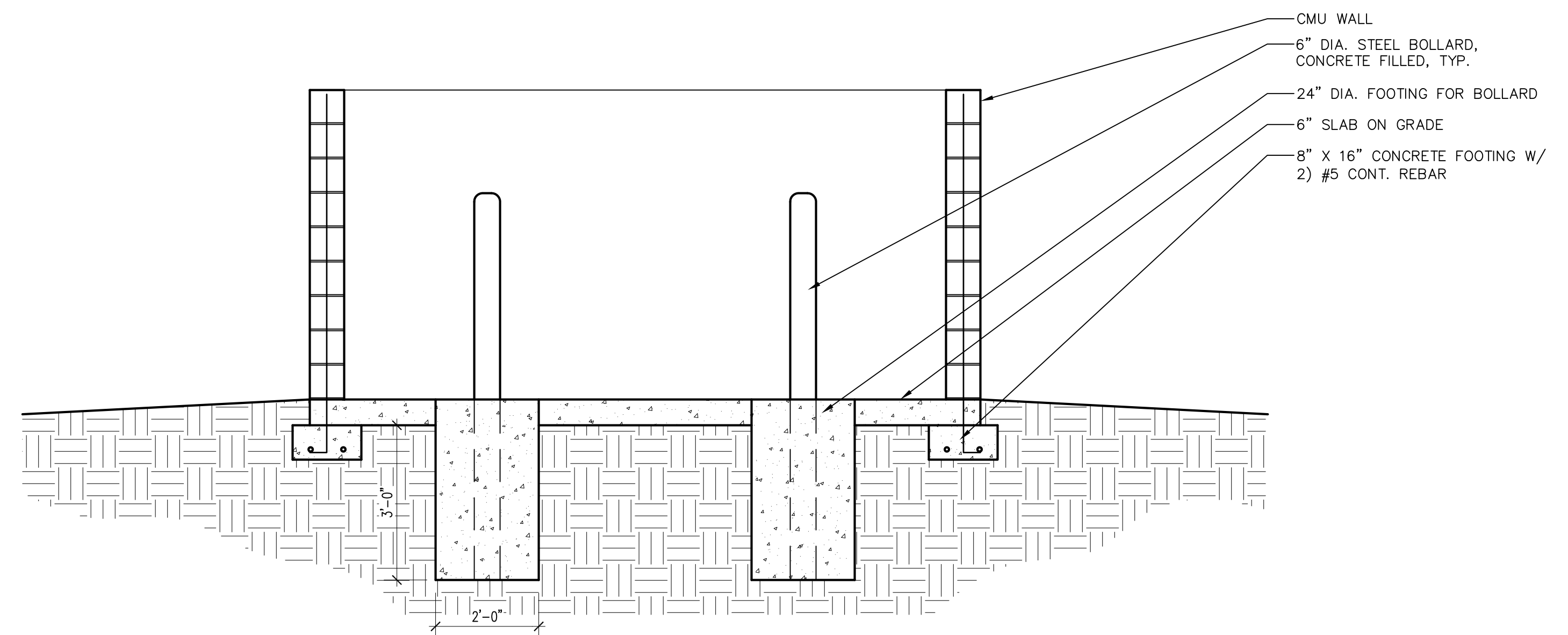
FENCE GATE DETAIL
1/2"=1'-0"



TRASH ENCLOSURE ELEVATION
1/2"=1'-0"



TRASH ENCLOSURE PLAN
1/2"=1'-0"



TRASH ENCLOSURE SECTION
1/2"=1'-0"

NOTE: ALL FINISHES FOR TRASH ENCLOSURE TO MATCH EXISTING MATERIALS AT SCHOOL